



36 | Swallow Drive | Wymondham | NR18 9FN

£425,000



The Features

- Immaculate four bedroom detached family home in a popular location
- 22'4" Open plan kitchen/dining area with patio doors opening onto the garden
- 14'11" Lounge with doors opening to the garden, complemented by a separate study
- Four bedrooms, including a master with fitted wardrobes and an en-suite shower room
- Ground floor cloakroom and a modern family bathroom to first floor
- Beautiful wrap-around landscaped garden to the rear
- Driveway parking and single garage with garden access via personnel door
- Double glazed with gas central heating and solar panels
- Built by renowned developer Taylor Wimpey, with some NHBC warranty remaining
- Vendors have found a chain-free property - quick sale possible

About the Property

If you're looking for a modern detached home in a sought after location, look no further than this impressive four bedroom family home on the Birchgate development in Wymondham. Combining contemporary design with a warm and welcoming feel, this beautifully presented property offers stylish, well proportioned living spaces perfect for both family life and entertaining. From the moment you step inside, the attention to detail and quality finish are immediately clear.

The ground floor has been thoughtfully designed to create a sense of flow and light, featuring a spacious sitting room with patio doors leading onto the garden, seamlessly connecting the indoors and outdoors. A separate study provides flexibility, ideal for use as a home office or playroom, while the open-plan kitchen and dining area forms the heart of the home, complete with sleek modern units, integrated appliances, and ample space for family meals and gatherings.

Upstairs, there are four double bedrooms, including a main bedroom with en-suite shower room. The remaining bedrooms are served by a contemporary family bathroom. Additional benefits include solar panels, helping to improve efficiency. Combining elegant presentation, practical design, and sustainable features, this home is ideal for anyone seeking a modern, move in ready property in one of Wymondham's most desirable developments.





The Outside

Step outside to a beautifully presented wrap around rear garden (approx 33'1"max x 35'10" max) designed for both relaxation and entertaining. A patio area provides the perfect spot for outdoor dining, while the well-kept lawn and planted borders bring colour and interest throughout the year.

To the front, the property benefits from a private driveway offering off-road parking for multiple vehicles, along with a spacious 23'2" garage fitted with an electric roller door.

Combining thoughtful landscaping with practical features, this outdoor space perfectly complements the home's modern design and peaceful residential setting.

Location Overview

Swallow Drive sits within the popular Birchgate development, built by Taylor Wimpey, on the edge of the historic market town of Wymondham. This residential area offers a great balance of modern living and community spirit, with everything you need just a short distance away including parks and a new school.

Wymondham's attractive town centre is home to a variety of independent shops, cafés, pubs, and restaurants, as well as a traditional weekly market that gives the town its friendly, local feel. Families are well catered for, with excellent schools nearby, including Ashleigh Primary School and Wymondham High Academy.

For day to day convenience, residents have access to local healthcare services, supermarkets, and leisure facilities. The railway station is only a few minutes away, offering direct trains to Norwich and Cambridge, making this a great choice for commuters. The A11 is also easily reached, providing quick links to Norwich and London.

Set among green open spaces and within a welcoming community, Swallow Drive offers an ideal setting for those looking to enjoy modern living in one of Norfolk's most desirable and well-connected market towns

Directions

Head out of Wymondham along Station Road/Silfield Road and follow the road to the end, where it bends to the left and becomes Swallow Drive. The property can be found on the left-hand side, opposite the turning for Magpie Place.

Agents Note

There will be a management fee payable once the site has completed, which is expected to be around 2026/2027. The fee is anticipated to be approximately £200 per annum.

Further Information

Letting Services -

We provide a professional, ARLA-accredited lettings and management service. Whether you're considering renting out your property to purchase another, exploring buy-to-let opportunities, or would simply like a free, no-obligation review of your current portfolio, our team will be happy to help. Please contact the office to discuss your options further.

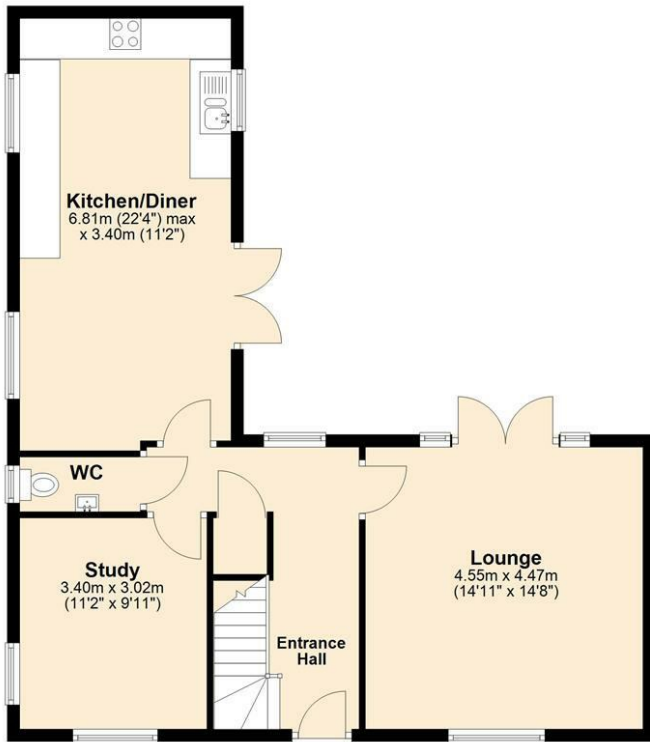
Disclaimer -

Butterfly Lettings, trading as Butterfly Homes, and its representatives are not authorised to make statements or assurances about the property, whether on their own behalf or on behalf of the client. No responsibility is accepted for any statements contained in these particulars, which do not form part of any offer or contract. We have taken care to ensure that the details provided for each property are accurate at the time of listing. However, the information supplied is intended as a guide only, and we do not obtain confirmation from the seller's legal representative when preparing it. Buyers should verify any leasehold details, charges, or other matters through their own legal representatives. All measurements, areas, and distances are approximate. Fixtures, fittings, and appliances have not been tested, so we cannot guarantee that they are in working order. It should not be assumed that the property has all necessary planning permissions, building regulations, or other consents. We recommend checking the local council's website for information on conservation areas, flood risks, tree preservation orders, planning applications, and other relevant matters. We also advise reviewing the property and surrounding area using Google Maps or Street View before attending a viewing. Photographs are for illustration only



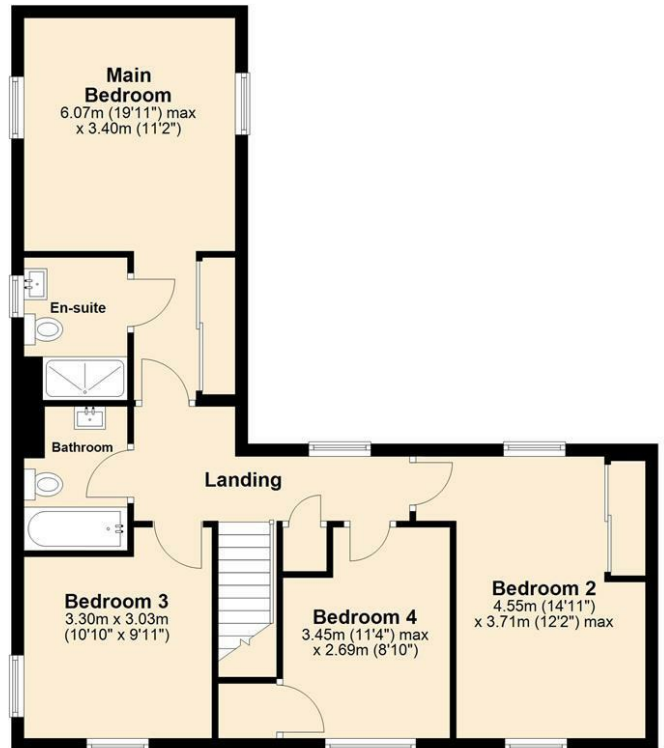
Ground Floor

Approx. 68.8 sq. metres (740.7 sq. feet)



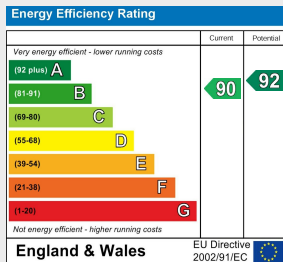
First Floor

Approx. 69.0 sq. metres (743.0 sq. feet)



Total area: approx. 137.8 sq. metres (1483.8 sq. feet)

Every effort has been made to ensure the accuracy of the floorplan provided. However, measurements of doors, windows, rooms, and other items are approximate, and no responsibility is accepted for any errors, omissions, or inaccuracies. This floorplan is for illustrative purposes only and should be used as such by prospective tenants. The services, systems, and appliances depicted have not been tested, and no guarantee is made regarding their functionality or efficiency.
Plan produced using PlanUp.



Tenure: Freehold
Council Tax Band: E
Local Authority: South Norfolk

You can also scan the QR code to view the property online. This will take you directly to our website, where you'll find additional photos, detailed floorplan, and all the key information in line with Parts A, B, and C of the Material Information guidance for property listings. You'll also be able to browse our other available properties there.



Butterfly Homes | 6 Church Lane | Eaton | NR4 6NZ
sales@butterflyhomes.co.uk
www.butterflyhomes.co.uk
01603 870870



Butterfly Lettings, trading as Butterfly Homes, and its representatives are not authorised to make statements or assurances about the property, whether on their own behalf or on behalf of the client. No responsibility is accepted for any statements contained in these particulars, which do not form part of any offer or contract. We have taken care to ensure that the details provided for each property are accurate at the time of listing. However, the information supplied is intended as a guide only, and we do not obtain confirmation from the seller's legal representative when preparing it. Buyers should verify any leasehold details, charges, or other matters through their own legal representatives. All measurements, areas, and distances are approximate. Fixtures, fittings, and appliances have not been tested, so we cannot guarantee that they are in working order. It should not be assumed that the property has all necessary planning permissions, building regulations, or other consents. We recommend checking the local council's website for information on conservation areas, flood risks, tree preservation orders, planning applications, and other relevant matters. We also advise reviewing the property and surrounding area using Google Maps or Street View before attending a viewing. Photographs are for illustration only and should not be taken as confirmation that any items shown are included in the sale. If any particular detail is important to you, please seek independent professional verification before proceeding. Referral Fees: Butterfly Homes may receive a referral fee from recommended solicitors, mortgage advisers, or other service providers. Any referral arrangement will not affect the cost or quality of the service provided.

We are Butterfly Lettings LTD trading as Butterfly Homes with registered number 15893663 and address C/O Shaw & Co 3 Colgate Norwich Norfolk NR3 1BN