

HANNAH CARR

POWERED BY
exp UK



35 Thrapston Road
Spaldwick, Huntingdon PE28 0TA
FREEHOLD

Description

Located in a sought after village in Cambridgeshire, this well presented, three bedroom, semi detached home is a great first home, upsize, downsize or investment!

Upon entering this super home, you are greeted by a spacious hallway providing access to a light-filled reception room with double doors to the rear garden, a well-appointed kitchen/ diner with ample space for family meals and entertaining, and a handy downstairs WC - a must in any busy household! This one is spacious enough to double up as a handy space to store coats and shoes too.

Upstairs, the light filled landing leads to three bedrooms and a fully fitted, modern bathroom.

Outside, the property is set back from the road and has a front garden providing a pleasant approach. A private driveway offers off-road parking for two vehicles.

The enclosed rear garden is predominantly laid to lawn, with a patio area adjacent to the house, ideal for outdoor dining and relaxation. A large shed is also included.

Spaldwick is a well equipped village with a good selection of amenities, including a beautiful local pub serving good food and good ales, and a service station complete with a mini Waitrose, Greggs and Starbucks. The local primary school also has a fantastic preschool connected for infants, and the village is within Hinchinbrooke School catchment for which a school bus runs.

The village has easy access onto the A14 and A1, and you can catch regular fast trains Into London Kings Cross from the nearby town of Huntingdon.

Quick Summary

Property Type: Semi Detached House

Bedrooms: 3

Bathrooms: 1

WC: 1

Reception Rooms: 1

Features

- ✓ Three Bedrooms
- ✓ Enclosed Rear Garden
- ✓ Perfect First Home / Downsize / Investment
- ✓ Hinchingsbrooke School Catchment
- ✓ Semi Detached House
- ✓ Off Road Parking
- ✓ Good Local Amenities and Road Links

To request a viewing please get in touch:



01480 597 799



hannah.carr@exp.uk.com

www.hannahcarr.exp.uk.com

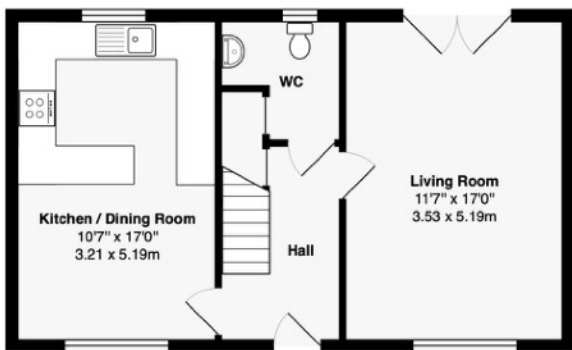




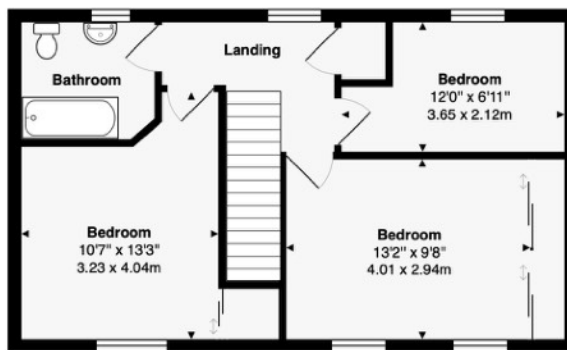








Ground Floor



First Floor

Approximate Area: 996 ft² ... 92.5 m²

Floor plans are for layout purposes only and are not intended to be scale drawings.
 All measurements, including window and door openings are approximate and should not be relied upon for valuation purposes.
 Please check all dimensions, shapes & compass bearings before making any decisions reliant upon them.
 MK Property Photography accepts no liability whatsoever for any error or omission or inadvertent mis-statement in a floor plan.

© MK Property Photography | www.mkpp.co.uk

Score	Energy rating	Current	Potential
92+	A		92 A
81-91	B		
69-80	C	79 C	
55-68	D		
39-54	E		
21-38	F		
1-20	G		