



CHI

39 CHURCH STREET

KINGSBRIDGE • TQ7 1BT



FLAT 2

GROUND FLOOR

Entrance Hallway | Lounge | Kitchen | Master Bedroom | Bedroom 2
| Shower Room

EXTERNAL

Allocated Parking Space



“A beautifully presented 2 bed apartment with a parking space”...

Flat 2 at 39 Church Street presents a beautifully crafted ground floor apartment featuring two bedrooms, situated conveniently in the heart of Kingsbridge. Enjoying proximity to the town centre, local amenities, the park, and the Kingsbridge Estuary, this residence offers both comfort and accessibility.

- Walking Distance Into The Town Centre
- Beautifully Presented
- Previously Utilised As A Holiday Let
- Benefit Of A Parking Space

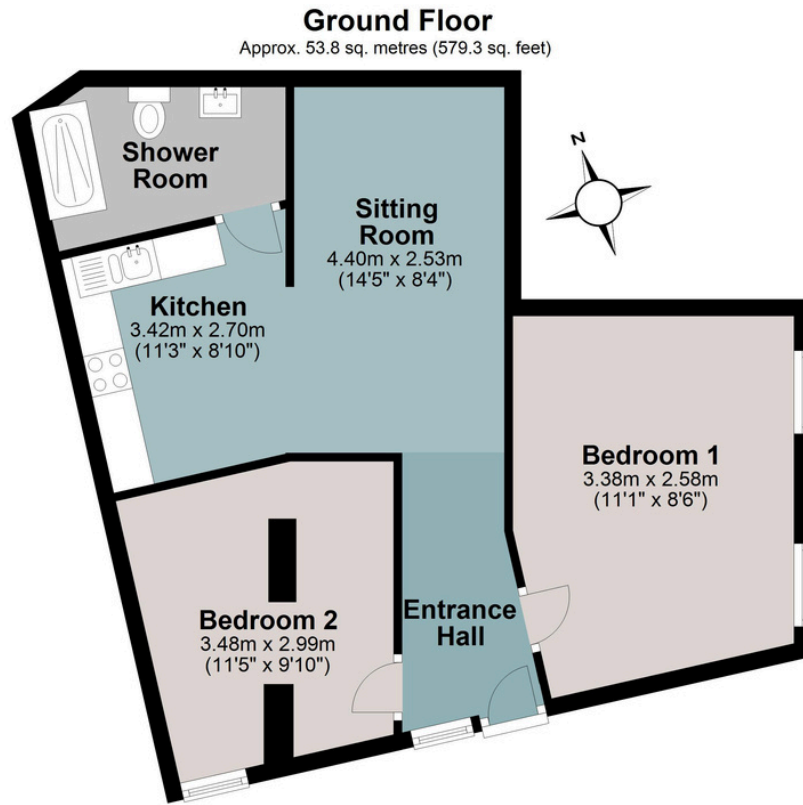
Upon entry, you are greeted by a spacious hallway leading into an open plan living, dining, and kitchen area. Designed for both relaxation and functionality, the kitchen area boasts fitted appliances and a Velux window, bathing the space in natural light. Additionally, a step-up enhances the aesthetic appeal while maintaining practicality. The apartment also includes a shower room, a generously sized master bedroom, a second bedroom, and internal and external storage cupboards.

Rare for apartments in this locale, the property features an allocated parking space behind the building.

Currently operating as a successful holiday let, this apartment holds great potential for first-time buyers, those seeking a lock-up and-leave property, or investors. For those considering continuing its use as a holiday let, there exists the opportunity for a turn key arrangement, facilitating a seamless transition and enabling you to jumpstart your investment journey.



TOTAL APPROXIMATE AREA: 53.8 SQ METRES 579.3 SQ FT



Total area: approx. 53.8 sq. metres (579.3 sq. feet)

IMPORTANT NOTICE: We would like to inform prospective purchasers that these sales particulars have been prepared as a general guide only. They are prepared and issued in good faith and are intended to give a fair description of the property, but do not constitute part of an offer or contract. Any description or information given should not be relied on as a statement or representation of fact that the property or its services are in good condition. Neither Charles Head, nor any of its employees, has any authority to make or give any representation or warranty whatsoever in relation to the property. Floorplans are for guidance purposes only and may not be to scale. The photographs show only certain parts and aspects of the property at the time they were taken. Any reference to alterations to, or use of, any part of the property is not a statement that any regulations or other consent has been obtained. . If there are any important matters likely to affect your decision to buy, please contact us before viewing the property. ALL STATEMENTS CONTAINED IN THESE PARTICULARS AS TO THIS PROPERTY ARE MADE WITHOUT RESPONSIBILITY ON THE PART OF CHARLES HEAD.



113 FORE ST, KINGSBRIDGE TQ7 1BG
kingsbridge@charleshead.co.uk
01548 852 352
www.charleshead.co.uk

Tenure: Leasehold of 999 years from 31st December 1999

Council Tax Band: A

Local Authority: South Hams District Council

Services: Mains electricity, water and drainage. Gas central heating.

Service Fee/Ground Rent: Approx. £60 per month

EPC: C

Viewings: Very strictly by appointment only

Location: Kingsbridge is a sought-after market town nestled at the estuary head in the beautiful South Hams, a designated Area of Outstanding Natural Beauty. You'll find an array of independent shops, renowned dining experiences and cosy local pubs. The town amenities include two supermarkets, petrol station, cinema, leisure centre, medical facilities, community hospital and excellent schools.

Kingsbridge Community College is one of the top-rated secondary schools in the UK. The estuary offers boat moorings and water sport activities, while public transport and well-connected road links lead to nearby Dartmouth, Salcombe and Totnes. With an abundance of pristine beaches, hidden coves and breathtaking walks on the doorstep.

Directions: As you go down Church Street on the one way system, the apartment is located on the right hand side and will have 39 Church Street written on the entrance.

Salcombe 7.6 miles - Totnes 13.1 miles (Railway link to London Paddington) - Dartmouth 12 miles