
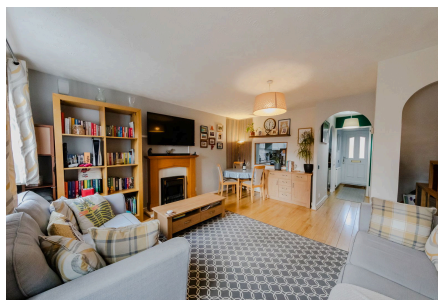


## Huntsman Grove, Blakelands

Guide Price £375,000

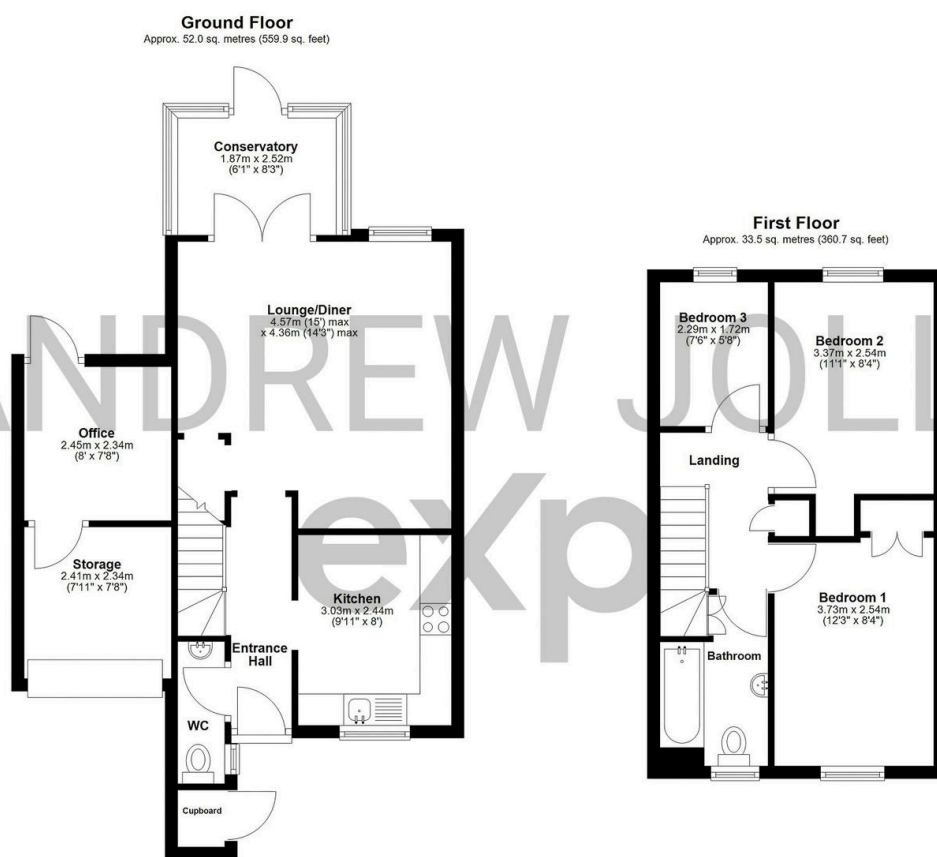
 3  1  1



A smart and well-presented three-bedroom link-detached home tucked away in the popular Blakelands area of Milton Keynes, offering flexible living space including a home office, a rear conservatory, driveway parking and a layout perfectly suited to modern day living.

## Key Features

- 1980s built family home
- Council tax band - D
- 86m<sup>2</sup> = 921 Sq Ft
- Office space added in 2022
- Short walk to Tongwell Lake
- Current owners since 2017
- Approx. monthly utility bills = £170pcm
- Vendors are re-locating
- Single garage to side of house
- REF: AJ1276



Total area: approx. 85.5 sq. metres (920.6 sq. feet)

Floor plans are for illustrative purposes only and should be treated as general guidance. Dimensions are approximate to give a general indication of the floor layout only.  
Plan produced using PlanUp.