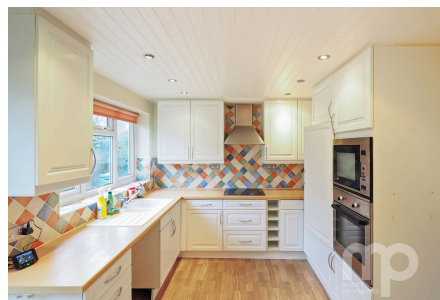


Old Hall Close, Ashwellthorpe

Guide Price £420,000-£430,000

 5  1  3



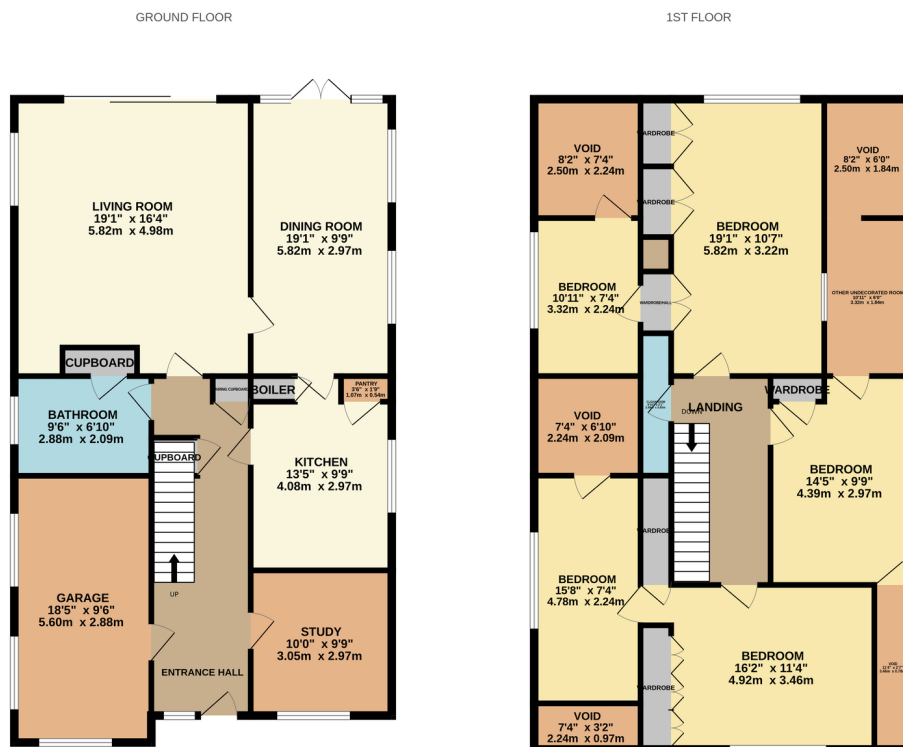
****GUIDE PRICE £420,000 - £430,000****

Moneyproperties proudly present this spacious detached 4/5 bedroom chalet bungalow, situated in a quiet cul-de-sac in the popular South Norfolk village of Ashwellthorpe. Offering approximately 2,500 sq ft of versatile living space, the property occupies a generous plot measuring around 180ft x 40ft (0.16 acres), with attractive field views to both the front and rear.

Tenure: Freehold EPC: E Council Tax: D

Key Features

- Spacious detached 4/5 bedroom chalet bungalow, situated in a quiet cul-de-sac
- Offering approximately 2,500 sq ft of versatile living space
- 75ft well-stocked rear garden backing onto wooded area with two storage sheds
- Close to the amenities of nearby Wymondham and Norwich, with regular bus and rail services
- There is no onward chain so a quick sale would be possible
- In the popular South Norfolk village of Ashwellthorpe, neighbouring Wymondham
- Generous well stocked plot 180ft x 40ft (0.16 acres), with attractive field views to both the front and rear.
- 55ft front garden with mature trees and parking for 3-4 vehicles and single garage
- ideal for families looking to benefit from sought after local schools and the beautiful Norfolk countryside
- See our full online listing for further details including flood risk, broadband speed and other material information possible



Whilst every attempt has been made to ensure the accuracy of the floorplan contained here, measurements of doors, windows, rooms and any other items are approximate and no responsibility is taken for any error, omission or mis-statement. This plan is for illustrative purposes only and should be used as such by any prospective purchaser. The services, systems and appliances shown have not been tested and no guarantee as to their operability or efficiency can be given.
Made with Metropix ©2026