



## Windmill Street, W1T

£2,000 Per week

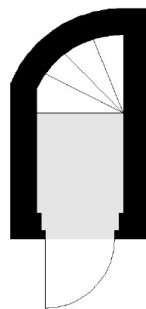
A bright and spacious three double bedroom duplex in the heart of Fitzrovia. The property is near UCL and Westminster making it ideal for three academics sharing.

Windmill Street is just off Charlotte Street and nestled amongst its wide variety of bars and eateries including the Charlotte Street Hotel and the Michelin starred 'Pied a Terre'.

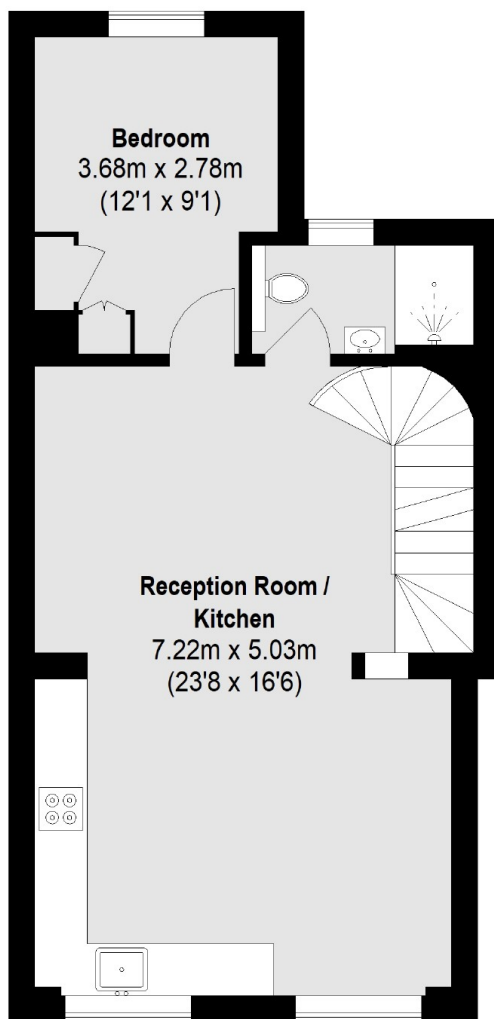
### Features

- Top Floor Duplex
- Wood Floors Throughout
- Three Double Bedrooms
- Jacuzzi Bath/Shower
- Good Natural Light
- Short Let or Long Let

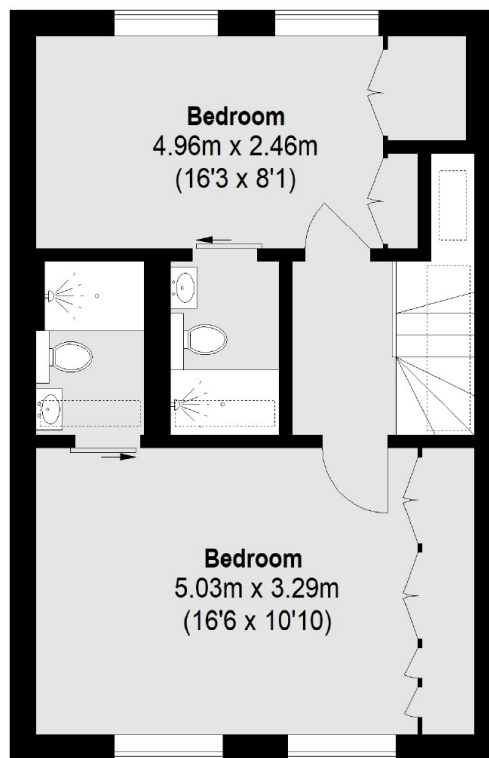
# Windmill Street, London, W1T



**Second Floor**



**Third Floor**



**Fourth Floor**

Total area (approx.): 92.12 sq. m (991 sq. ft)