

HJC

HIGHER VALUES



Chadwick Place

Surbiton, KT6 5RG

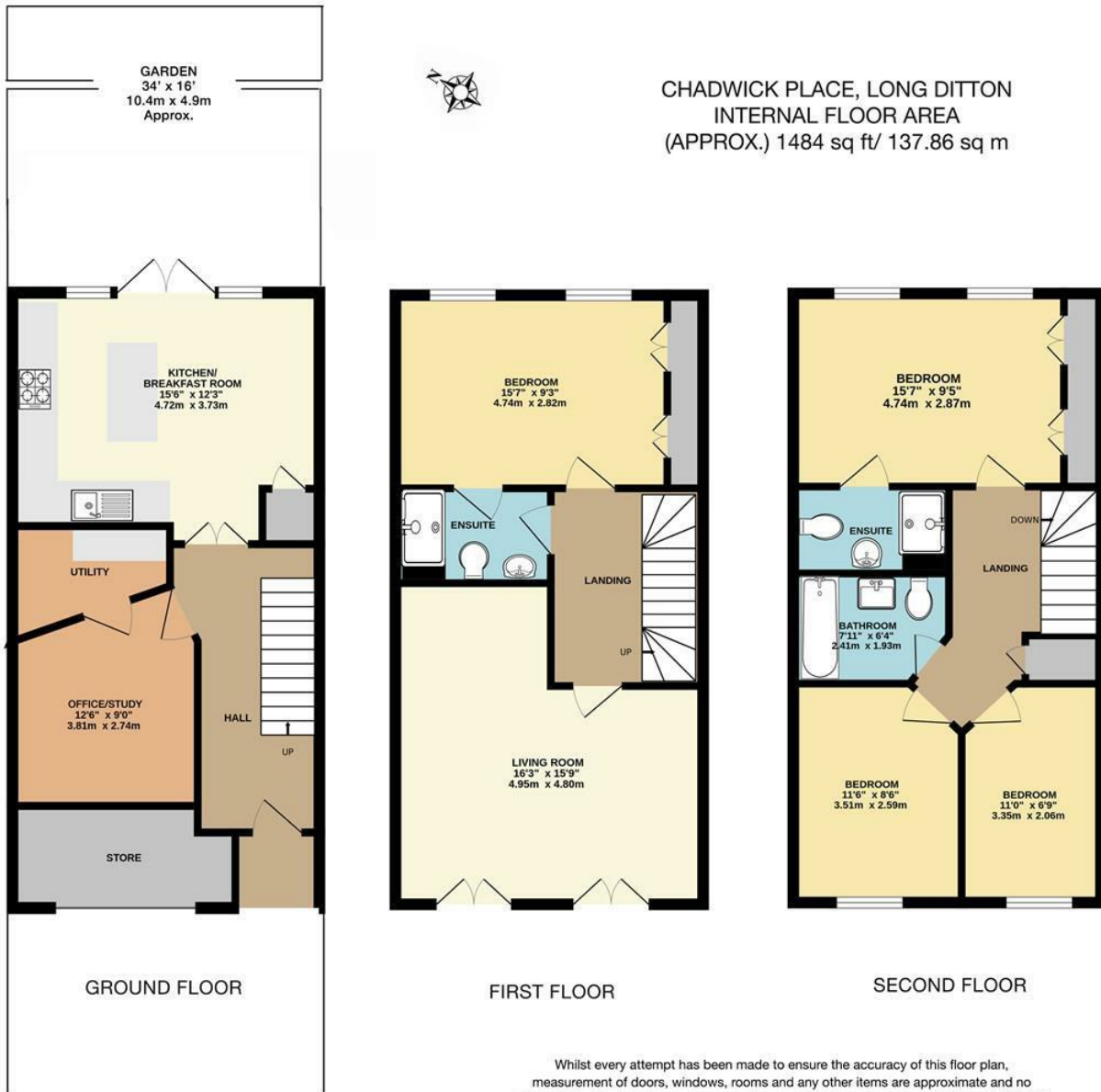
Guide Price £975,000

A stylish four bedroom townhouse in the sought after St James development. This family home offers a charming entrance hallway leading to a fitted kitchen opening onto the private garden. The garage has been converted to accommodate an office / study plus a utility room. The first floor provides a wonderful sitting room, flooded with natural light and fitted with beautiful double Juliette balconies. The first of the double bedrooms complete with ensuite is located off the hallway. The second floor offers a further three bedrooms, one with ensuite and a well proportioned family bathroom. Further benefits include off street parking, offered to market with no onward chain, walking distance to the town centre and mainline train station with it's fast services to London Waterloo. Council Tax Band F.

Material Info: Water / Electricity / Sewerage: Mains. Heating: Gas Mains. Broadband: Fibre (FTTC). Mobile Coverage: Indoor: Likely Outdoor: Likely.

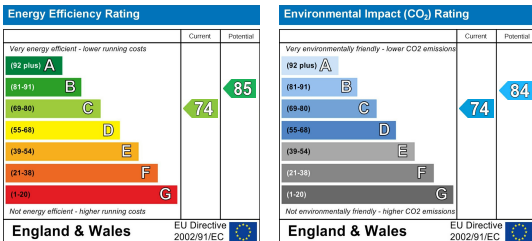
- Prestigious St James Development
- 4 Bedrooms
- Kitchen / Dining Room
- En-suite to Two Bedrooms
- Off Street Parking
- No Onward Chain
- 3 Bathrooms
- Pretty Rear Garden
- Potential to Extend STTP
- Walking Distance to River, Station and Town Centre

Floor Plan



Whilst every attempt has been made to ensure the accuracy of this floor plan, measurement of doors, windows, rooms and any other items are approximate and no responsibility is taken for any error, omission or mis-statement. Made with Metropix © 2025.

Energy Efficiency Graph



These particulars, whilst believed to be accurate are set out as a general outline only for guidance and do not constitute any part of an offer or contract. Intending purchasers should not rely on them as statements of representation of fact, but must satisfy themselves by inspection or otherwise as to their accuracy. No person in this firm's employment has the authority to make or give any representation or warranty in respect of the property.