

TO LET

Gatten Lodge Flat, Gatten, Shrewsbury, SY5 0SJ

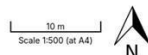


Gatten Flat

Halls



Produced on Land App, May 28, 2026.
© Crown copyright and database rights 2026 (Ordnance Survey licence number 100059532)



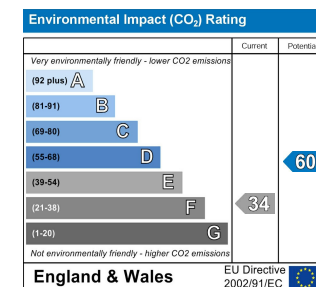
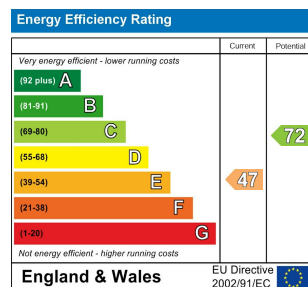
TO LET

£700 Per Calendar Month

Gatten Lodge Flat, Gatten, Shrewsbury, SY5 0SJ

Property to sell? We would be delighted to provide you with a free no obligation market assessment of your existing property. Please contact your local Halls office to make an appointment. **Mortgage/financial advice.** We are able to recommend a completely independent financial advisor,

who is authorised and regulated by the FCA. Details can be provided upon request. **Do you require a surveyor?** We are able to recommend a completely independent chartered surveyor. Details can be provided upon request.

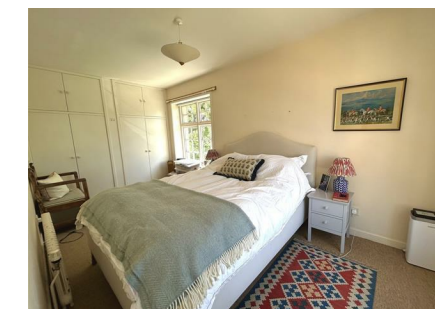


A well proportioned apartment in a rural setting providing 2 bedrooms, large living room, kitchen, bathroom, lobby and two parking spaces.



01588 638755

Bishops Castle Lettings
33B Church Street, Bishops Castle, Shropshire, SY9 5AD
E: bishopscastle@hallsgb.com



IMPORTANT NOTICE. Halls Holdings Ltd and any joint agents for themselves, and for the Vendor of the property whose Agents they are, give notice that: (i) These particulars are produced in good faith, are set out as a general guide only and do not constitute any part of a contract (ii) No person in the employment of or any agent of or consultant to Halls Holdings has any authority to make or give any representation or warranty whatsoever in relation to this property (iii) Measurements, areas and distances are approximate, Floor plans and photographs are for guidance purposes only (photographs are taken with a wide angled / zoom lenses) and dimensions shapes and precise locations may differ (iv) It must not be assumed that the property has all the required planning or building regulation consents. Halls Holdings, Bowmen Way, Shrewsbury, Shropshire SY4 3DR. Registered in England 06597073.

hallsgb.com

Residential / Fine Art / Rural Professional / Auctions / Commercial

hallsgb.com

01588 638755

Pontesbury (5 miles)
Shrewsbury (12 miles)
All distances are approximate

- Two Bed single story flat
- Spacious living accommodation
- Set beneath the Stiperstones
- Private parking for 2 cars
- Available from July

DESCRIPTION

A characterful 2-bedroom, semi-detached flat situated beneath the Stiperstones, offering secluded rural life in an area of outstanding natural beauty. The property benefits from a spacious central living and dining area, enhanced by impressive three-quarter length windows that perfectly frame the far-reaching countryside views.

The accommodation briefly comprises a generous living/dining room, kitchen, bathroom, front porch, one double bedroom and one single bedroom.

Despite its idyllic rural position, the property remains conveniently accessible, lying just a few miles from the popular village of Pontesbury and approximately 30 minutes from the county town of Shrewsbury, where a full range of amenities, schooling and transport links can be found. The surrounding local area offers an excellent selection of country pubs, local shops and a highly regarded primary school, making this an attractive home for those seeking a balance of countryside living and reasonable convenience.

W3W

///restless animator triathlon

FRONT PORCH

Tiled floor with understairs storage and stairs leading to the first floor

LIVING/DINING ROOM

Carpeted floor, radiators, and windows.

KITCHEN

Wooden flooring, wall-mounted and base units, stainless steel sink, and window

BATHROOM

Vinyl tile flooring, bath with shower, pedestal basin, and WC.

BEDROOM ONE

Double bedroom with carpeted floor, radiator, built-in double wardrobe and window.

BEDROOM TWO

Single bedroom with carpeted floor, radiator, and window.

OUTDOORS

Private parking for 2 cars on a gravel driveway

TERM

The property will be offered on an Assured Periodic Tenancy, with longer term tenants preferred.

Pets to be declared prior to viewing.

SERVICES

The property is served by mains water and electric. Heating is provided by an oil-fired boiler and drainage is to a private system.

Further to the pure rent, a £50pcm further cost will be due direct to the landlord for the provision of electricity.

HOLDING DEPOSIT

A holding deposit equal to one week's rent will be due upon application.

SECURITY DEPOSIT

A security deposit equal to five weeks' rent will be due to be held by the DPS.

LOCAL AUTHORITY

Shropshire Council, Shirehall, Abbey Foregate, Shrewsbury, Shropshire, SY2 6ND.

COUNCIL TAX

The property is in Band ' B ' on the Shropshire Council Register.

VIEWINGS

By appointment only and conducted by Henry Evans

