



*Jordan fishwick*

Church Street Hayfield High Peak



## Church Street Hayfield High Peak SK22 2JE

£450,000



### The Property

A charming stone-built semi-detached home situated in the picturesque and highly sought-after village of Hayfield. This deceptively spacious cottage is beautifully presented throughout and offers versatile accommodation arranged over four floors. The property retains a wealth of character features, including traditional inglenook fireplaces with wood-burning stoves and exposed beams, creating a warm and inviting atmosphere. The accommodation comprises an entrance hall, a cosy living room and a separate dining room—both featuring inglenook fireplaces—along with a well-appointed kitchen with patio doors opening onto the rear garden. To the first floor are three bedrooms and a family bathroom, while the second floor boasts a loft room with its own en suite, ideal as a guest suite or principal bedroom.

A useful cellar room with plumbing, currently used as a utility area, provides additional practical space.

Externally, the property benefits from a delightful enclosed rear garden, complete with a patio area, lawn, and traditional stone storage sheds.



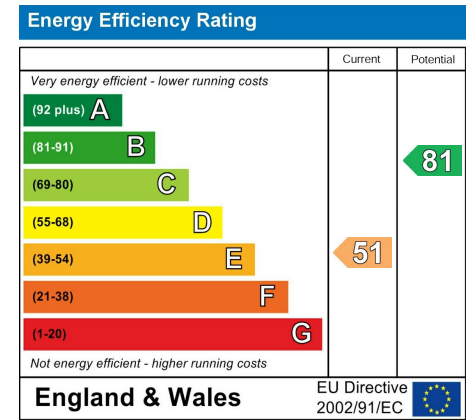
- Beautifully Presented Stone Semi Detached Cottage Full of Character
- Deceptive Accommodation Over Four Floors
- Three Bedrooms Plus Loft Room with En Suite
- Two Reception Rooms Both with Wood Burring Stoves
- Delightful Enclosed Rear Garden with Patio and Lawn
- Idyllic Setting in the Popular Village of Hayfield
- Stunning Kitchen and Modern Bathroom Suite

**Postcode** SK22 2JE

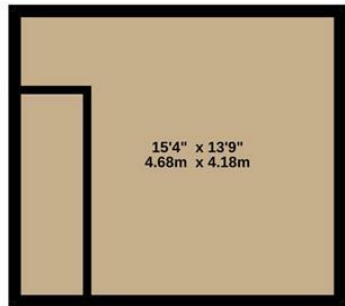
**EPC Rating** E

**Local Authority** High Peak

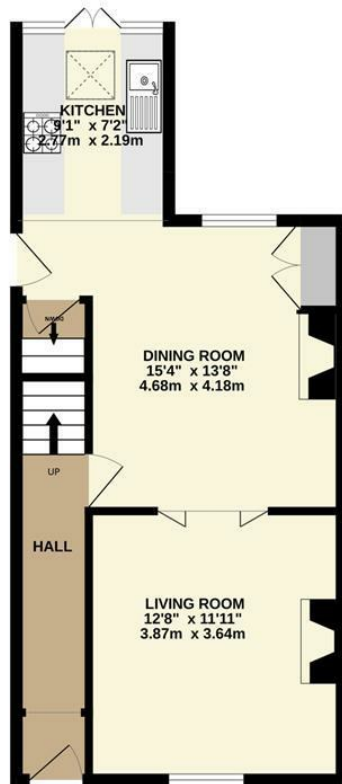
**Council Tax** D



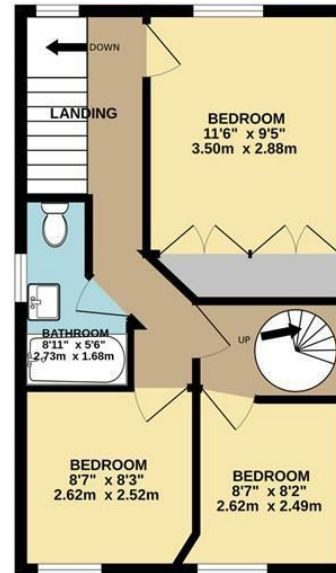
BASEMENT



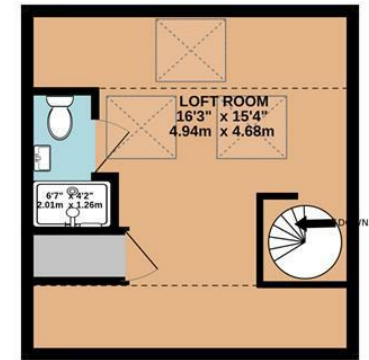
GROUND FLOOR



1ST FLOOR



2ND FLOOR



Whilst every attempt has been made to ensure the accuracy of the floorplan contained here, measurements of doors, windows, rooms and any other items are approximate and no responsibility is taken for any error, omission or mis-statement. This plan is for illustrative purposes only and should be used as such by any prospective purchaser. The services, systems and appliances shown have not been tested and no guarantee as to their operability or efficiency can be given.  
 Made with Metropix ©2026



These particulars are believed to be accurate but they are not guaranteed and do not form a contract. Neither Jordan Fishwick nor the vendor or lessor accept any responsibility in respect of these particulars, which are not intended to be statements or representations of fact and any intending purchaser or lessee must satisfy himself by inspection or otherwise as to the correctness of each of the statements contained in these particulars. Any floorplans on this brochure are for illustrative purposes only and are not necessarily to scale.

Offices at: Chorlton, Didsbury, Disley, Hale, Glossop, Macclesfield, Manchester Deansgate, Manchester Whitworth Street, New Mills, Sale, Wilmslow and Withington

14 Market St, Disley, Cheshire, Stockport SK12 2AA

01663 767878

disley@jordanfishwick.co.uk

www.jordanfishwick.co.uk