



Flat 2, Long View Long Close, Downton, Wiltshire, SP5 3HX

£900 PCM

## About The Property

A fully refurbished one-bedroom flat located in the heart of the popular town of Downton. The property is nearing the end of its renovation and includes a complete redecoration, new carpets, and a recently fitted bathroom.

The layout features a spacious entrance hallway that leads directly into the lounge, which is well-proportioned and has a large sash window, creating a bright and inviting space. At the rear of the first floor, there is a generous kitchen/dining room equipped with an electric ceramic hob, an electric fan oven, and space for a washing machine. Additionally, the first floor includes an updated bathroom, fitted 12 months ago, complete with a thermostatic shower.

The bedroom is located on the second floor and is a large double that offers extra storage in the eaves, as well as a good-sized storage cupboard on the upstairs landing.

The property is offered unfurnished on a long-term basis and benefits from one allocated private parking space. The property is heated via new electric night storage heaters.



613.55 sq ft

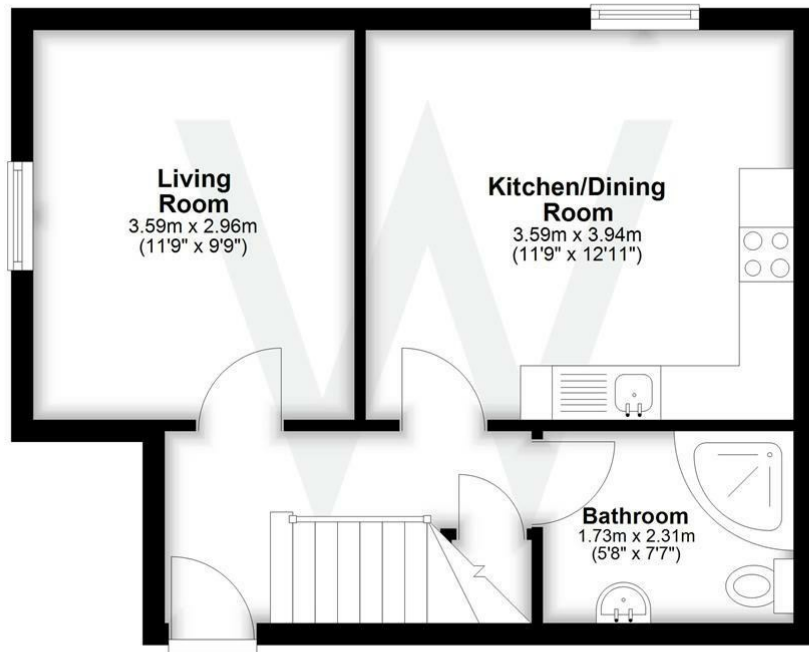
- One bedroom flat
- Large kitchen dinner
- Fully redecorated
- New carpets
- Allocated parking space
- New electric night storage heaters
- Unfurnished
- Long term tenancy





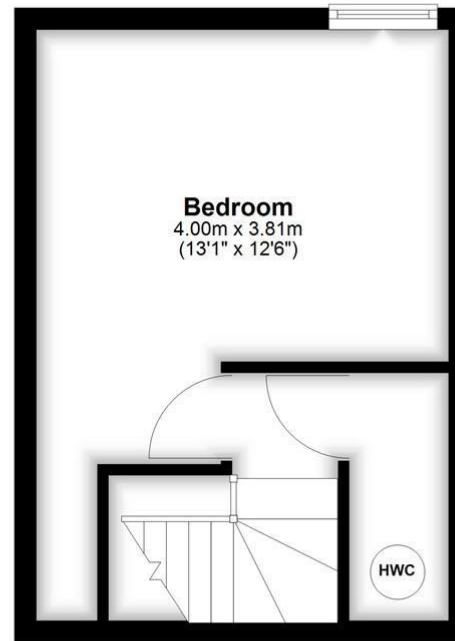
## Ground Floor

Approx. 35.9 sq. metres (386.0 sq. feet)



## First Floor

Approx. 20.7 sq. metres (223.2 sq. feet)



Total area: approx. 56.6 sq. metres (609.3 sq. feet)  
**Flat 2, Long View, Downton, Salisbury**

## Further Information

Let available date: 22nd May 2026  
 NB: This date is provisional and will only be confirmed once referencing has been successfully completed.

Property type: Flat

Furnish type: Unfurnished

Deposit: £1,035

Local authority: Wiltshire

Council Tax: Band A

EPC: E(46)

### Energy Efficiency Rating

	Current	Potential
Very energy efficient - lower running costs		
(92 plus) <b>A</b>		
(81-91) <b>B</b>		
(69-80) <b>C</b>		<b>73</b>
(55-68) <b>D</b>		
(39-54) <b>E</b>	<b>46</b>	
(21-38) <b>F</b>		
(1-20) <b>G</b>		
Not energy efficient - higher running costs		
<b>England &amp; Wales</b>	EU Directive 2002/91/EC	