



## Key Features

- ◆ Two-bedroom, top-floor flat
- ◆ Popular Roselands area of Eastbourne
- ◆ Surrounded by local shops and cafes
- ◆ Walking distance from parks and seafront
- ◆ Easy access to train station and town centre
- ◆ EPC rating D

2  1  1 

Roselands Avenue, Roselands, Eastbourne

£1,000 PCM



Northwood are delighted to welcome to market this recently redecorated, two-bedroom, second-floor apartment in a purpose-built block in the Roselands area of Eastbourne.

Accommodation comprises: living room, kitchen, two double bedrooms and bathroom with shower over bath.

Further benefits include gas central heating, double-glazing and secure entry-phone.





Located in the Roselands area of Eastbourne, surrounded by local shops and cafes, only a few minutes walk from the seafront and local parks and on major bus routes for easy access to the town centre and train station, this bright, spacious apartment is ideally placed for making the most of life on the Sunshine Coast.

Please view our immersive virtual tour to fully appreciate this fantastic property:  
<https://tour.giraffe360.com/c7cf18930e994595be867d209d18cea7>

Mobile Phone Coverage and Broadband speeds can be checked on the Ofcom website:  
<https://checker.ofcom.org.uk/>

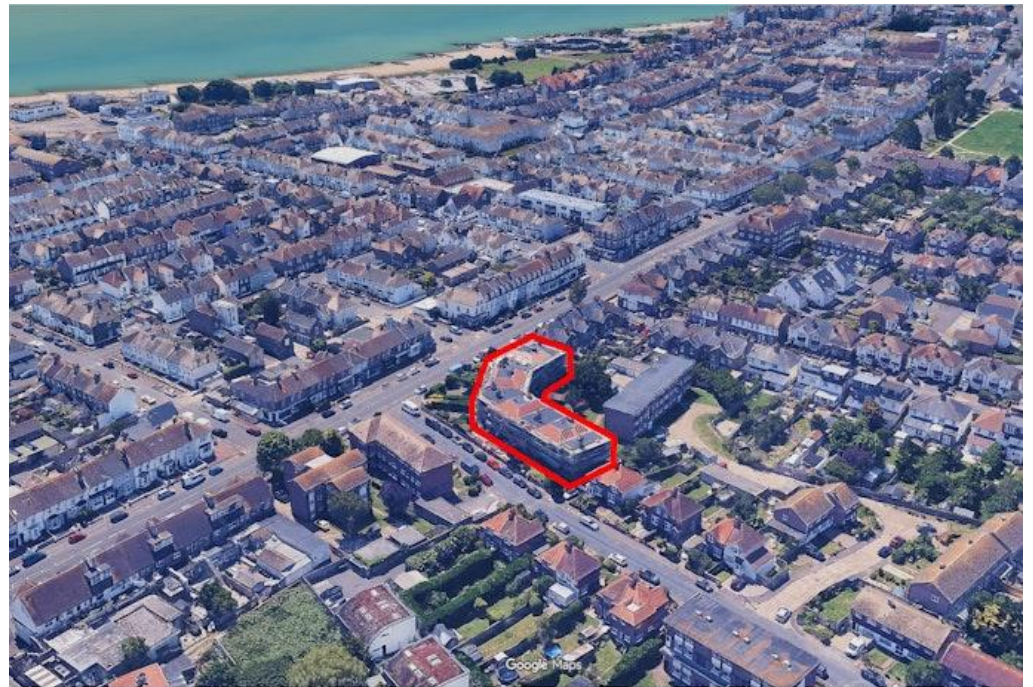
Council Tax Band B: £1970

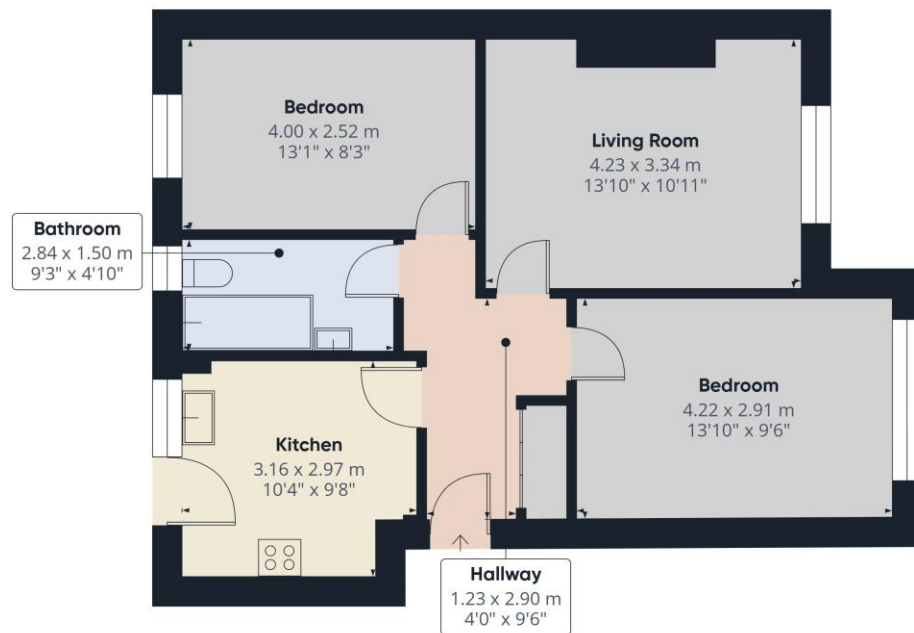
Holding Deposit: £230.00 (equivalent to one week's rent)  
Full Deposit: £1150.00 (holding deposit + equivalent of four weeks' rent)  
1st month's rent + Full Deposit: £2150.00  
Minimum Tenancy: 6 months

Total household income must exceed £30,000.00 to be considered for this property.

This property is managed directly by the landlord.







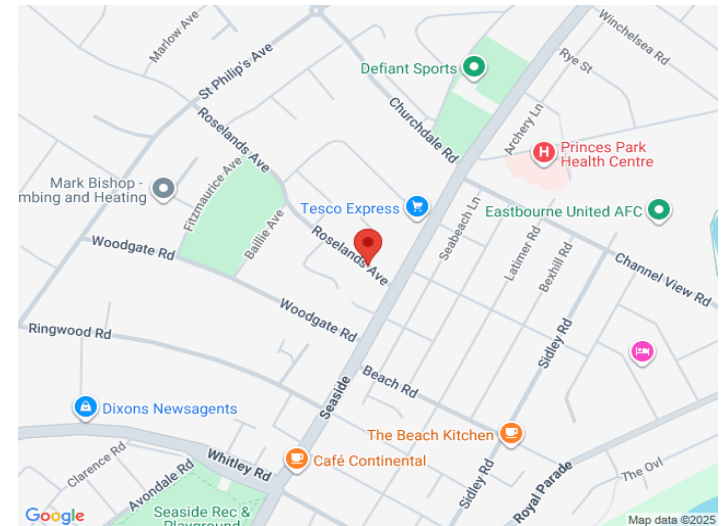
**northwood**  
Local knowledge, national reach

Approximate total area<sup>(1)</sup>  
57.3 m<sup>2</sup>  
617 ft<sup>2</sup>

(1) Excluding balconies and terraces

Calculations reference the RICS IPMS 3C standard. Measurements are approximate and not to scale. This floor plan is intended for illustration only.

GIRAFFE 360



SEE MORE ONLINE

**Northwood**

81-83 South Street

Eastbourne

BN21 4LR

01323 744544

eastbourne@northwooduk.com

**northwood**  
Local knowledge, national reach