



smarthomes

Gospel Farm Road

Acocks Green, Birmingham

- A Three Bedroom End-Terrace Family Home
- Re-Fitted Kitchen & Re-Fitted Shower Room
- Good Size Easterly Facing Rear Garden
- Driveway Parking

£230,000

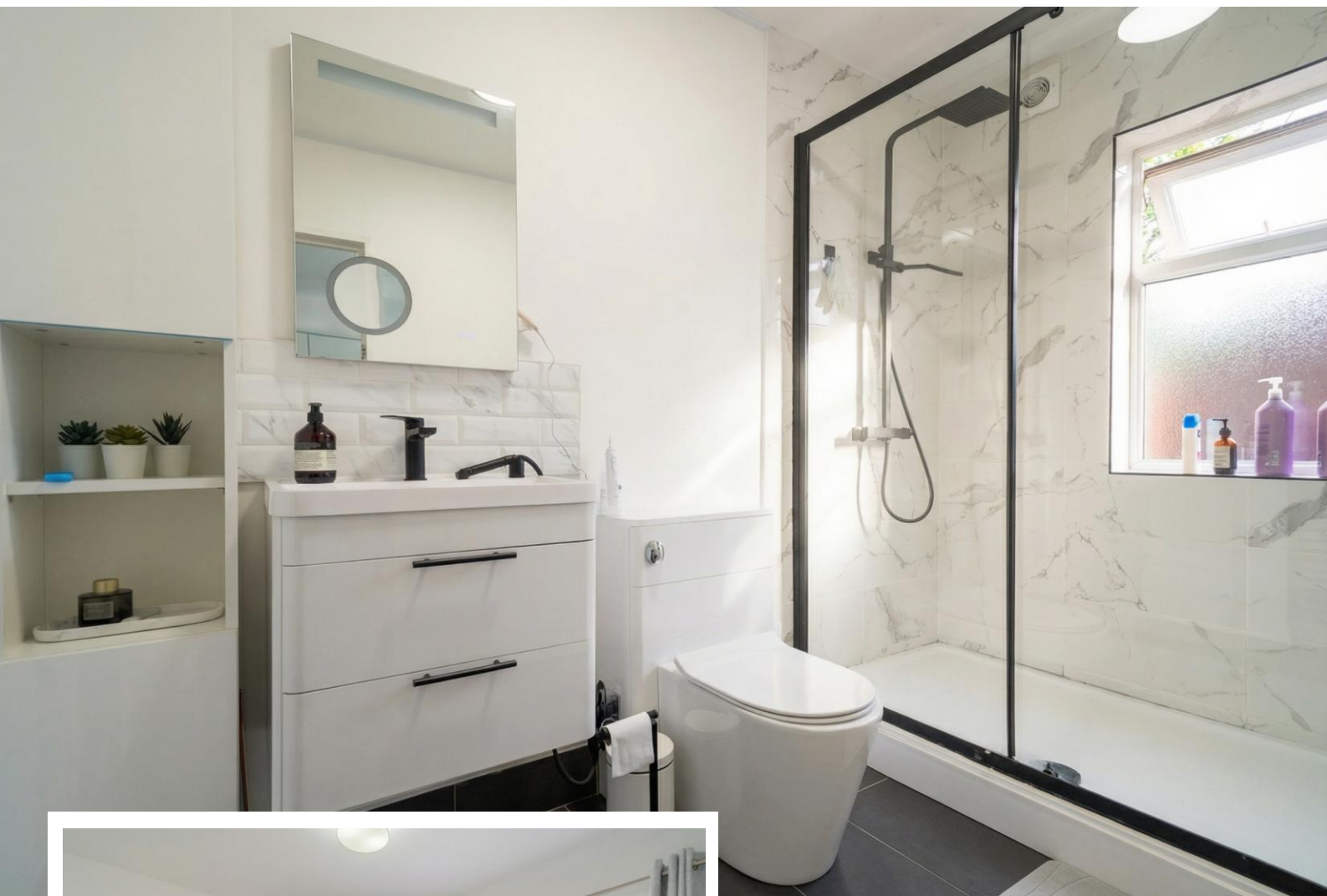
Current EPC Rating - D
Current Council Tax Band - A





Property Description

An extremely well presented three bedroom end-terrace property briefly affording lounge, re-fitted kitchen, re-fitted ground floor shower room, good sized rear garden, off-road parking, UPVC double glazing and gas central heating



Rooms & Measurements

Lounge to Front 4.2m x 4.2m (13'9" x 13'9")

Re-Fitted Kitchen to Rear 3.3m x 2.9m (10'9" x 9'6")

Re-Fitted Ground Floor Shower Room 2.8m x 1.6m (9'2" x 5'2")

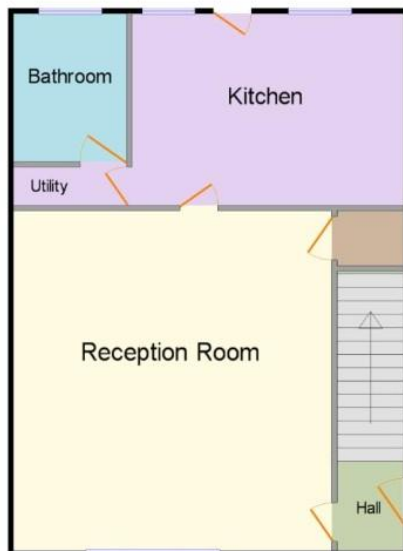
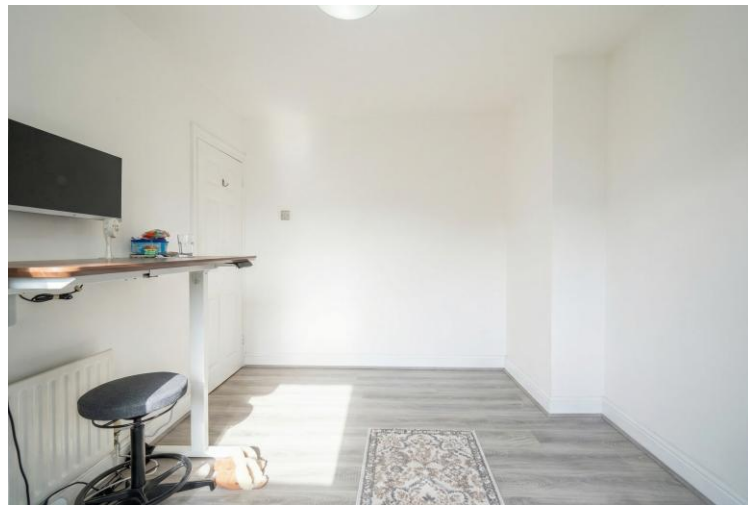
Bedroom One to Front 5.2m (max) x 3.2m (17'0" x 10'5")

Bedroom Two to Rear 3.9m x 2.8m (12'9" x 9'2")

Bedroom Three to Rear 2.9m x 2.2m (9'6" x 7'2")

Tenure

We are advised by the vendor that the property is freehold. We would advise all interested parties to obtain verification through their own solicitor or legal representative. EPC supplied by vendor. Current council tax band – A



316 Stratford Road
Shirley
Solihull
B90 3DN

www.smart-homes.co.uk
0121 744 4144

Agents Note: Whilst every care has been taken to prepare these particulars, they are for guidance purposes only. We believe all information to be correct from the day of marketing however, we advise and recommend that your conveyancer and or surveyor verifies all information supplied. All measurements are approximate are for general guidance purposes only and whilst every care has been taken to ensure their accuracy, they should not be relied upon and potential buyers are advised to recheck the measurements.