



## Couthurst Road, SE3

### £600,000

Located in a fabulous position on this sought after road comes this pretty terrace cottage which has been recently decorated throughout and offers good size living accommodation throughout. Accommodation comprises of a large reception rooms, kitchen/diner and ground floor bathroom and two double bedrooms upstairs. There is a pretty garden to the rear with a patio area. Located in a peaceful location.

### Features

- Sought After Conservation Area
- Two Double Bedroom Cottage
- Victorian Terrace
- Close To Shops & Transport
- Newly Decorated
- Private Garden

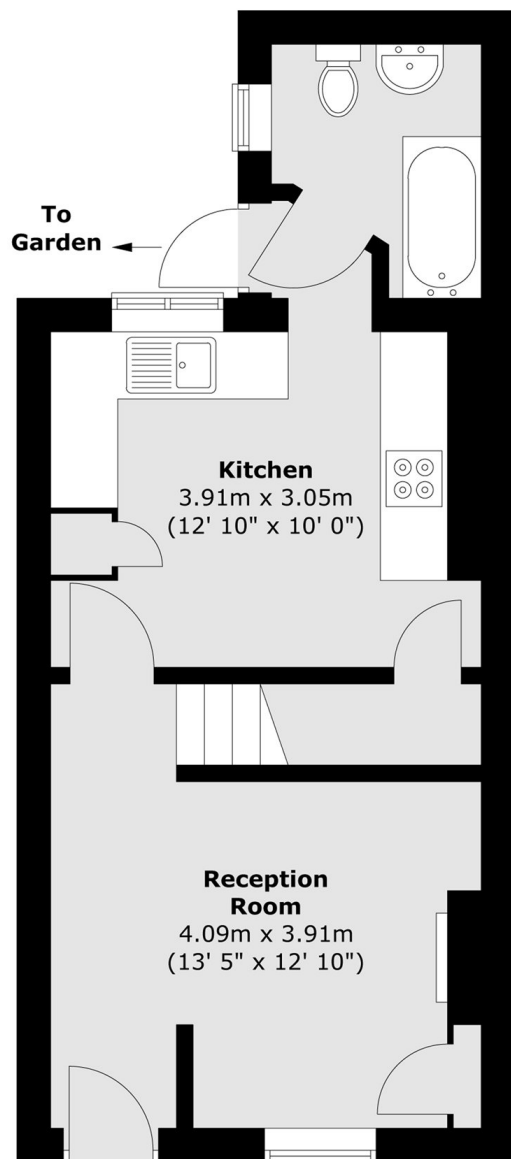


## Couthurst Road, SE3

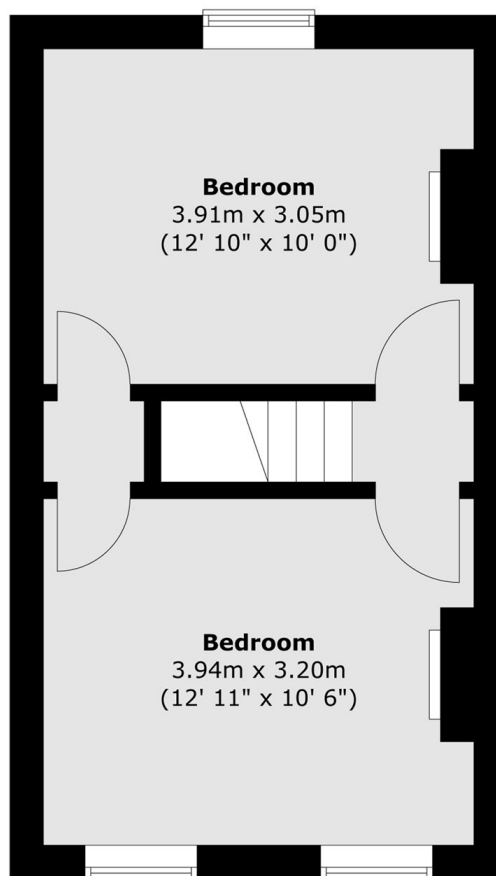
Situated in Rectory Fields, which is a much sought after conservation area. Close to Blackheath Royal Standard for its shops, cafés and amenities, and Westcombe Park Station, buses to North Greenwich and the Elizabeth line. The property sits within catchment area of sought after primary schools and an outstanding secondary school.



# Couthurst Road, London, SE3



**Ground Floor**



**First Floor**

Total area (approx.) : 62 sq. m (667 sq. ft)