



Price

£1,550 PCM

Fees Apply

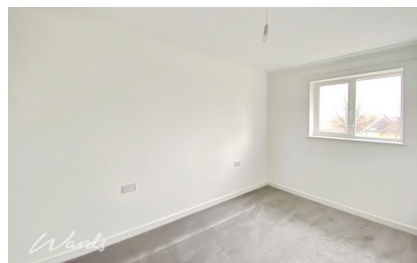


Available 31/07/26

Morton Way Tovil ME15

Wards

Helping you move forwards



Main Features

- Three Bedroom Town House
- Video Walk About Available
- Family Bathroom & Cloakroom
- Garage & Driveway
- Garden
- Popular Location



Deposit required is £1,788.46
Maidstone District - Council Tax Band Tax Band C

Renting a property is a big commitment and we recommend that you visit the local authority website and these websites which offer helpful information and advice about letting

www.gov.uk/government/publications/how-to-rent

www.gov.uk/private-renting

www.wardsofkent.co.uk/renting/tenancy-fees-individuals/

www.gov.uk/green-deal-energy-saving-measures

Call Maidstone 01622 675064 ■ wardsofkent.co.uk

IMPORTANT INFORMATION: Please contact our Lettings Team who will confirm the total costs involved in renting this property. For clarification, we wish to inform the prospective tenant that we have prepared these details as a general guide. The agent has not carried out a detailed survey nor tested the services, appliances, or specific fittings (unless otherwise stated), and no warranty can be given as to their condition. All room measurements are taken at floor level. We strongly recommend that all the information which we provide about the property is verified by yourself and your advisers. The contents of this publication are © Wards, 2015. Wards is a trading name of Arun Estates Limited Registered in England No. 2597969

Accommodation

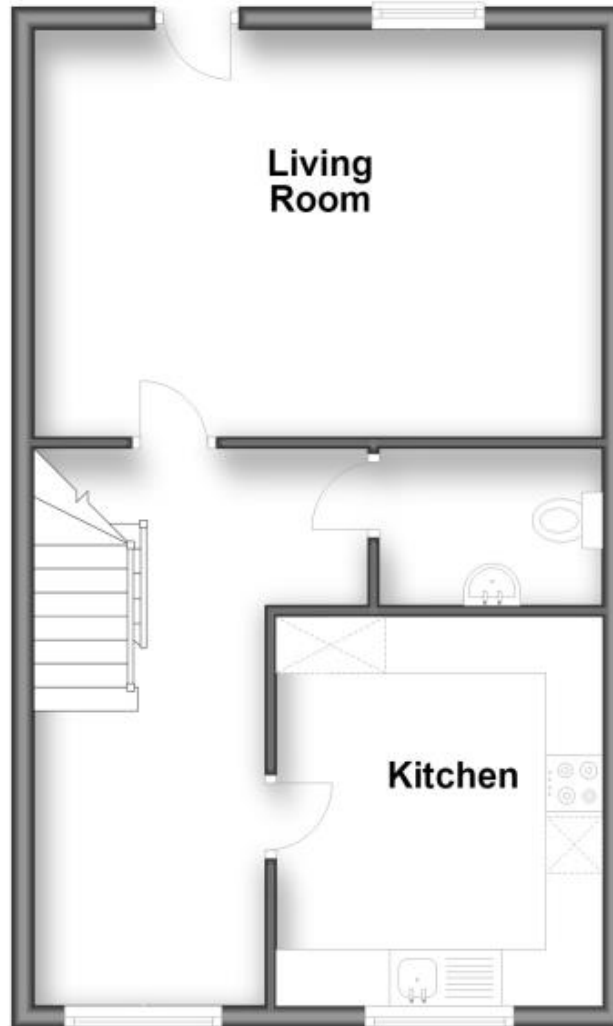
- Entrance Hallway
- Stairs & 1st Landing
- Lounge 5.02x3.63
- Kitchen 3.47x2.54
- Cloakroom
- Stairs & 2nd Landing
- Bedroom 1 4.80x2.25
- Bedroom 2 4.01x2.74
- Bedroom 3 2.48x2.17
- Bathroom

- Garden
- Garage & Driveway



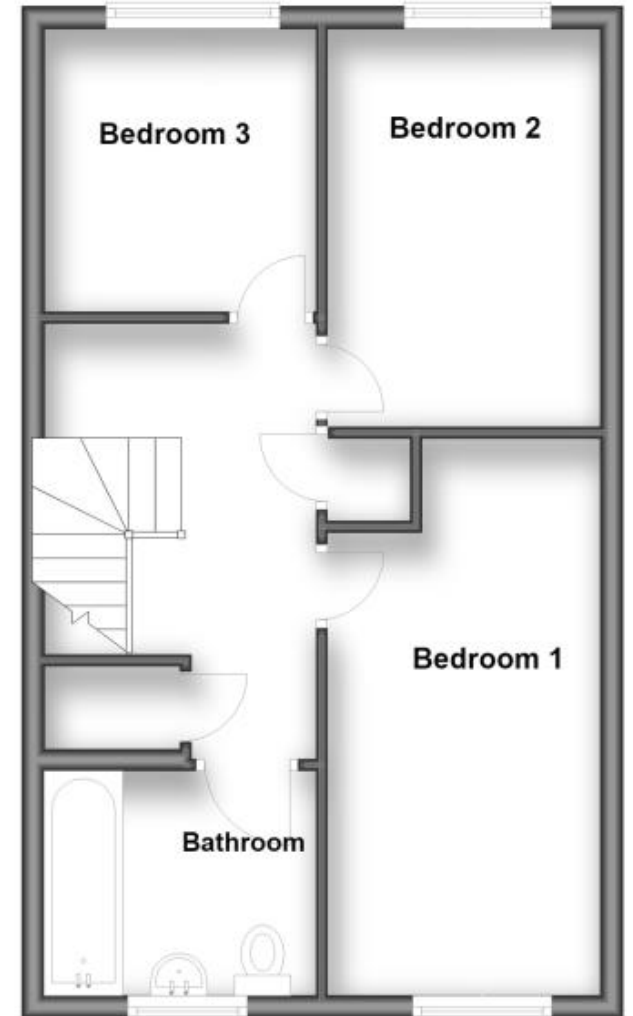
First Floor

Approx. 42.1 sq. metres (453.4 sq. feet)



Second Floor

Approx. 42.5 sq. metres (457.3 sq. feet)



Ground Floor

Approx. 20.7 sq. metres (222.6 sq. feet)

