



## 1 Knott Crescent

Willesborough Ashford, TN24 0UF

Price £265,000

Sitting on a pleasant corner plot position is this delightful semi-detached home available for sale with no onward chain.

The property comprises an entrance porch, sitting/dining room, kitchen, two double bedrooms and bathroom/WC. The rear garden enjoys a secluded feel leading on to the detached garage with driveway for off road parking. Gas central heating and double glazing are installed whilst the property is ideally located for access to local schools, transport links and William Harvey hospital.

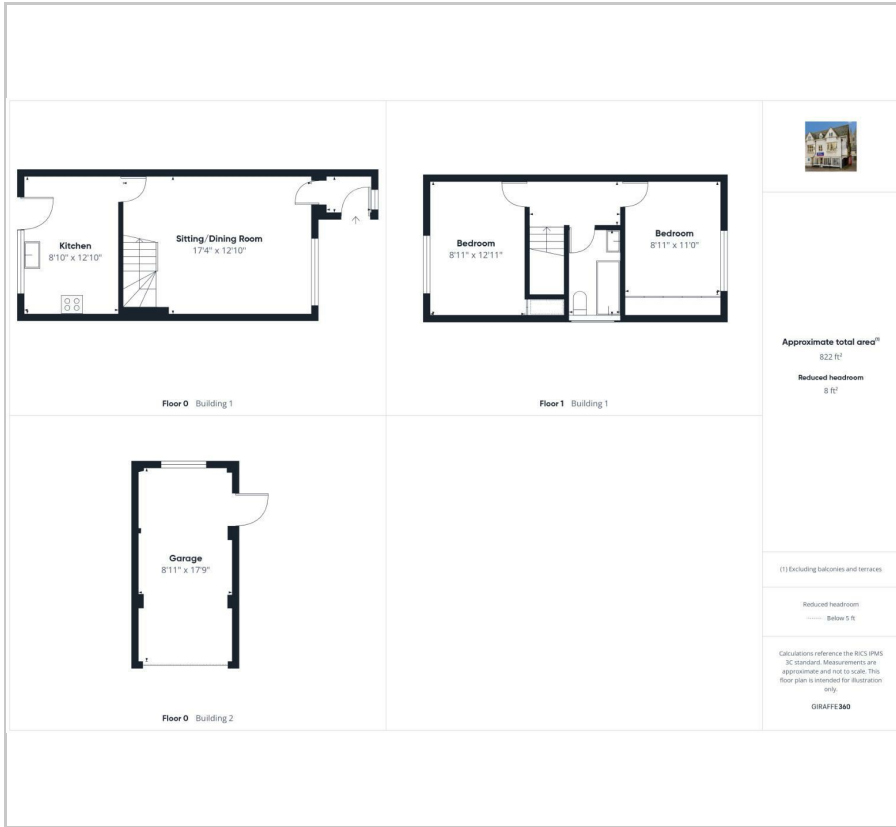
### Viewing

Please contact our Ashford Office on 01233 646411 if you wish to arrange a viewing appointment for this property or require further information.

- SEMI DETACHED HOUSE
- TWO BEDROOMS
- CORNER PLOT POSITION
- DETACHED GARAGE & DRIVEWAY
- GAS CENTRAL HEATING & DOUBLE GLAZING
- NO ONWARD CHAIN
- CLOSE TO WILLIAM HARVEY HOSPITAL
- SHORT WALK FROM LOCAL SCHOOLS



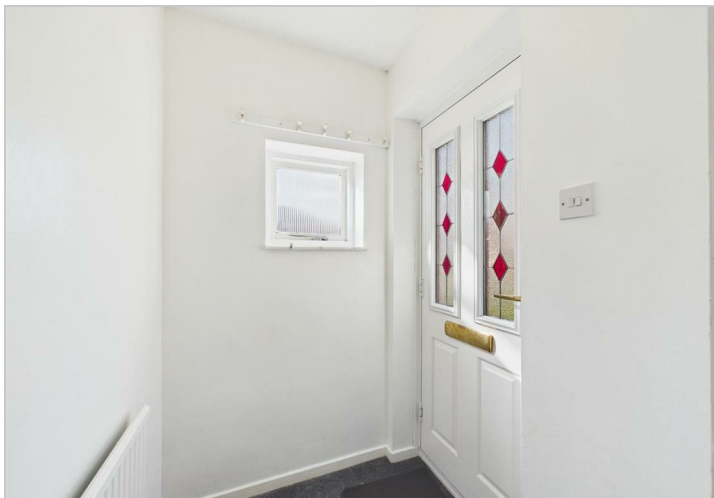
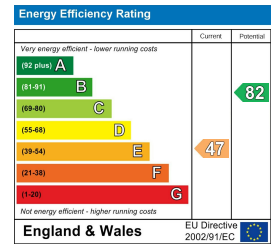
# Floor Plan



# Area Map



# Energy Efficiency Graph



These particulars, whilst believed to be accurate are set out as a general outline only for guidance and do not constitute any part of an offer or contract. Intending purchasers should not rely on them as statements of representation of fact, but must satisfy themselves by inspection or otherwise as to their accuracy. No person in this firm's employment has the authority to make or give any representation or warranty in respect of the property.