




Woodland Way, Horsham

Guide Price £700,000

 4  2  3



An impressive Detached Family Home located close to Popular Schools, boasting Four Double Bedrooms, three separate Reception Rooms and a Southerly Aspect Rear Garden.

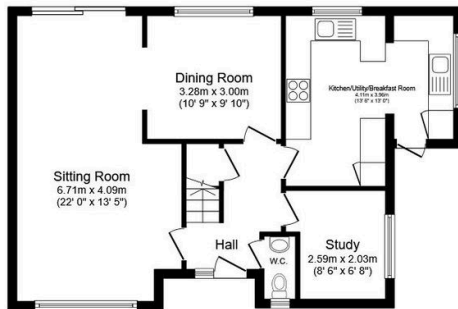
Tenure: Freehold

Council Tax Band: F

EPC: Current D - Potential C

Key Features

- Watch Our Video Tour
- 22ft Double Aspect Living Room
- 13ft x 13ft Kitchen Breakfast Room
- Detached Double Garage & Driveway
- Close To Popular Schools
- Four Generous Double Bedrooms
- Three Separate Reception Rooms
- Southerly Aspect Rear Garden
- En Suite To Principal Bedroom
- Modern Detached Family Home



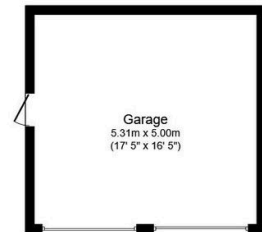
Ground Floor

Floor area 62.5 sq.m. (672 sq.ft.)



First Floor

Floor area 55.6 sq.m. (599 sq.ft.)



Garage

Floor area 26.6 sq.m. (286 sq.ft.)

Total floor area: 144.6 sq.m. (1,557 sq.ft.)

This floor plan is for illustrative purposes only. It is not drawn to scale. Any measurements, floor areas (including any total floor area), openings and orientations are approximate. No details are guaranteed, they cannot be relied upon for any purpose and do not form any part of any agreement. No liability is taken for any error, omission or misstatement. A party must rely upon its own inspection(s). Powered by www.Propertybox.io