



# Springview Heights

26 Bermondsey Wall West, SE16

£2,600 per month  
(£600 per week)

A spacious 2-bedroom, 2-bathroom flat, fully furnished and perfectly situated in the vibrant area.



# Springview Heights

26 Bermondsey Wall West, SE16

-



A spacious 2-bedroom, 2-bathroom, fully furnished flat and perfectly situated in the vibrant area. This property offers a comfortable and stylish living space, ideal for professionals, couples, or a small family.

This property displays two generously sized double bedrooms, two bathrooms, a fully equipped kitchen with integrated appliances and a nice balcony.

This flat is well-connected with excellent transport links, nearby amenities, and green spaces, offering the perfect blend of urban living and tranquillity.

Don't miss this opportunity to rent a stylish and convenient flat in

**Minimum Term:** 12 months  
**Deposit Required:** £3,000.00  
**Local Authority:** Southwark Council  
**Council Tax Band:** E  
**EPC Rating:** B  
**Furnished**

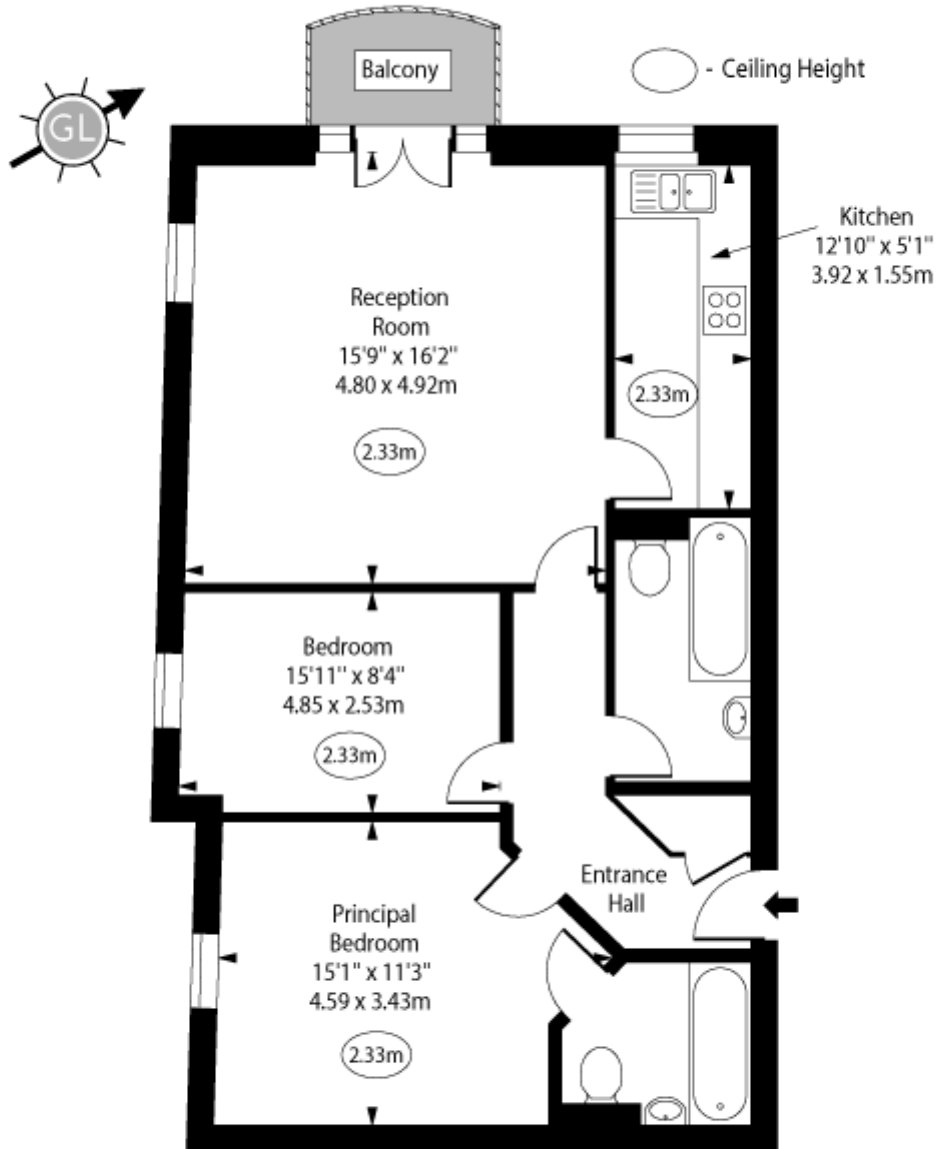
Energy Efficiency Rating		Current	Potential
Very energy efficient - lower running costs			
(92-100) <b>A</b>			
(81-91) <b>B</b>		83	83
(69-80) <b>C</b>			
(55-68) <b>D</b>			
(39-54) <b>E</b>			
(21-38) <b>F</b>			
(1-20) <b>G</b>			
Not energy efficient - higher running costs			
England, Scotland & Wales		EU Directive 2002/91/EC	

### Chestertons Tower Bridge Lettings

220 Tower Bridge Road  
 Tower Bridge  
 London  
 SE1 2UP  
 towerbridgelettingsusers@chestertons.co.uk  
 02073576911  
 chestertons.co.uk

Additional tenant charges apply (fees apply to non-AST tenancies only)  
 Tenancy Agreement Fee: £300  
 References per Tenant/Guarantor: £60  
 Inventory check (approx. £100 – £250 inc. VAT)  
 chestertons.co.uk/property-to-rent/applicable-fees

# Springview Heights, Bermondsey Wall West, SE16



Second Floor

Approx Gross Internal Area 740 Sq Ft - 68.75 Sq M

For Illustration Purposes Only - Not To Scale  
[www.goldlens.co.uk](http://www.goldlens.co.uk)  
Ref. No. 024923R

