

HUNT FRAME

ESTATE AGENTS



22 Benbow Avenue, Eastbourne, BN23 6EB

£270,000



CHAIN FREE. Conveniently located within easy reach of local shops in popular Langney Point, is this THREE BEDROOM terraced house with DRIVEWAY PARKING AND INTEGRAL GARAGE. Also comprising a modern fitted kitchen with some integrated appliances, an open plan LIVING/DINING ROOM, double glazed conservatory and family bathroom. Further benefits include double glazing, gas central heating and a low maintenance rear garden.



ENTRANCE HALL

Radiator, wood effect flooring, door to integral garage.

KITCHEN/BREAKFAST ROOM

11'5" x 7'1" (3.49 x 2.17)

Double glazed window to front. Fitted with a range of wall and base mounted units with worksurfaces and breakfast bar with tiled splash backs and single drainer stainless steel sink unit. Fitted electric oven and gas hob with extractor over. Plumbing point for washing machine, integrated dish washer and refrigerator. Wall mounted gas boiler.

LIVING/DINING ROOM

18'1" x 17'11" (5.53 x 5.47)

Double glazed window and patio door to conservatory, wood effect flooring, two radiators, storage cupboard. Stairs to first floor.

CONSERVATORY

15'4" x 8'10" (4.69 x 2.70)

Of double glazed construction with French doors to rear garden. Two radiators, wall lights and power points.

First floor landing

Linen cupboard, loft access.

BEDROOM 1

10'3" x 10'0" (3.14 x 3.05)

Double glazed window to front, radiator.

BEDROOM 2

11'4" x 10'3" (3.47 x 3.13)

Double glazed window to rear, radiator.

BEDROOM 3

8'1" x 7'7" (2.48 x 2.33)

Double glazed window to rear, radiator.

BATHROOM

7'5" x 5'4" (2.28 x 1.64)

Double glazed window to front. Fitted with a white suite comprising panelled bath with shower, hand basin, low flush wc. Heated towel rail, part tiled walls.

INTEGRAL GARAGE

16'4" x 7'6" (5.00 x 2.31)

With up & over door, power and light, gas and electricity meters and electricity consumer unit.

DRIVEWAY

Providing off road parking in front of the

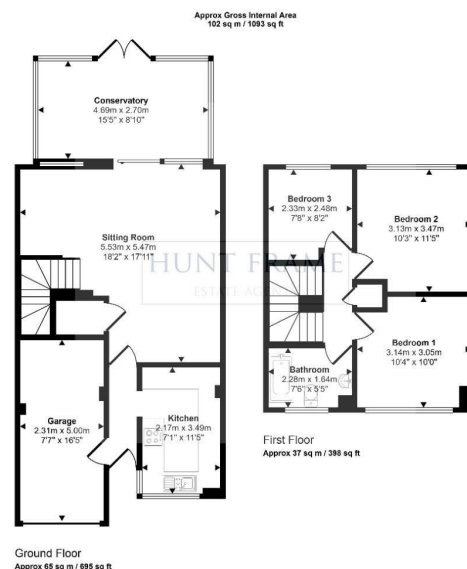
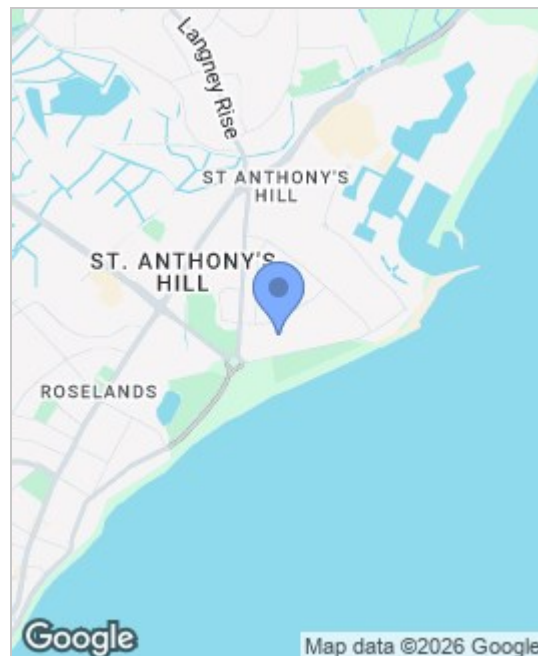
garage, with a small area of lawn to the side.

REAR GARDEN

Decking and artificial lawn, fenced with gate to the rear.

AGENTS NOTE

By law, we are required to conduct anti-money laundering checks on all potential buyers and sellers, and we take this responsibility very seriously. In line with HMRC guidelines, our trusted partner, Coadjute, will securely manage these checks on our behalf. Coadjute will send a secure link for you to complete the biometric checks electronically. A fee of £45+ VAT per person will apply for these checks. These anti-money laundering checks must be completed before we can commence marketing or issue a sales memo. Please contact the office if you have any questions in relation to this.



This floorplan is only for illustrative purposes and is not to scale. Measurements of rooms, doors, windows, and any items are approximate and no responsibility is taken for any error, omission or mis-statement. Some of items such as bathroom suites are representations only and may not look like the real items. Made with Made Snappy 360.

Energy Efficiency Rating		Environmental Impact (CO ₂) Rating			
Very energy efficient - lower running costs	Current	Potential	Very environmentally friendly - lower CO ₂ emissions	Current	Potential
(92 plus) A			(92 plus) A		
(81-91) B			(81-91) B		
(69-80) C			(69-80) C		
(55-68) D			(55-68) D		
(39-54) E			(39-54) E		
(21-38) F			(21-38) F		
(1-20) G			(1-20) G		
Not energy efficient - higher running costs			Not environmentally friendly - higher CO ₂ emissions		
England & Wales	EU Directive 2002/91/EC		England & Wales	EU Directive 2002/91/EC	

These particulars, whilst believed to be accurate are set out as a general outline only for guidance and do not constitute any part of an offer or contract. Intending purchasers should not rely on them as statements of representation of fact, but must satisfy themselves by inspection or otherwise as to their accuracy. No person in this firm's employment has the authority to make or give any representation or warranty in respect of the property.