



Dewey Lane, SW2

£2,300 Per calendar month

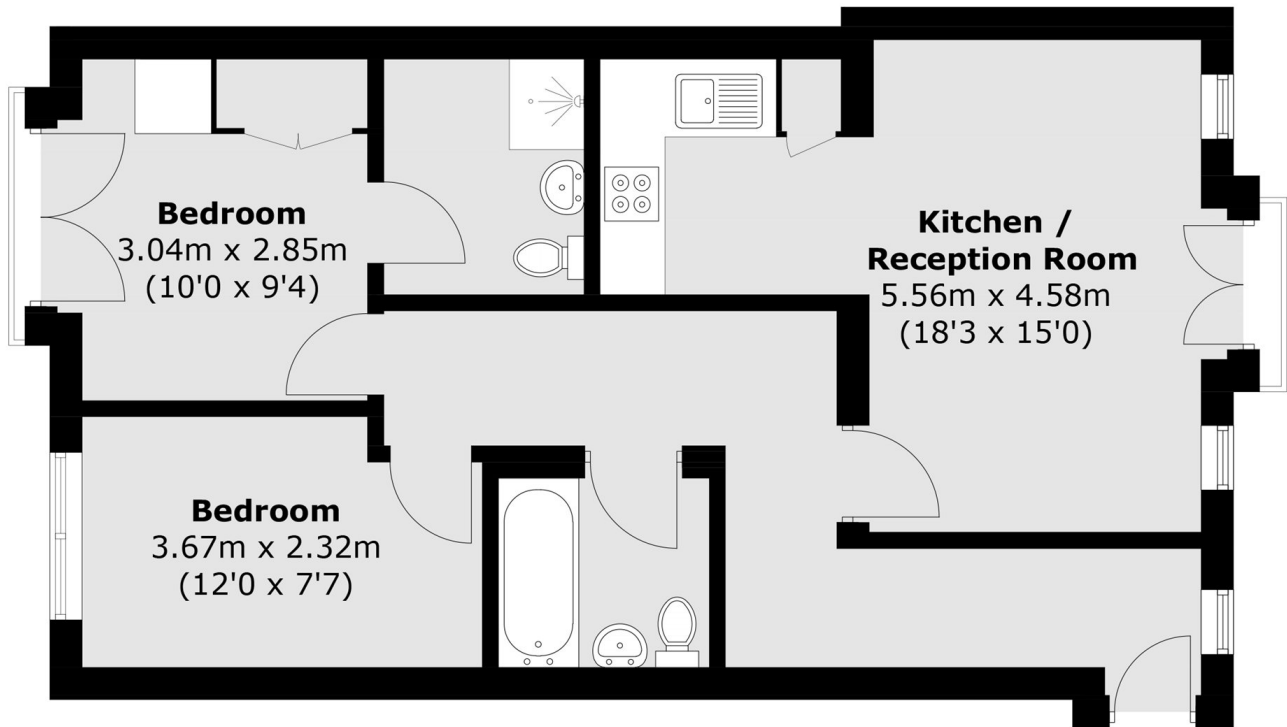
Finished to a high specification, this two bedroom, two bathroom apartment is ideally situated within a private gated development. It is ideal for a professional couple or two sharers.

A delightful two double bedroom flat situated within walking distance to Herne Hill station and Brixton underground station. It is also conveniently located close Brockwell Park.

Features

- Two Double Bedrooms
- Two Bathrooms
- Open Plan Reception
- Gated Development
- High Specification
- Close To Transport

Dewey Lane, London, SW2



Total area (approx.): 60.3 sq. m (649.0 sq. ft)