



Church Meadow

Surbiton, KT6 5EW

Guide Price

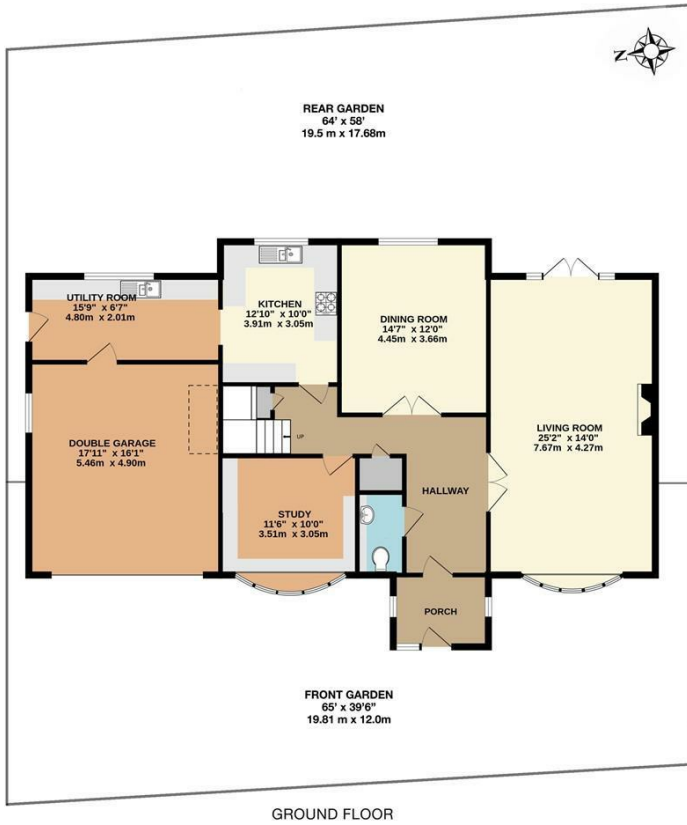
£1,500,000

A sizeable detached five bedroom family home in a highly sought-after location. Located in a quiet and highly desirable residential road and within the catchment area for great local schools, this detached property offers ample living space on the ground floor. The accommodation comprises a large reception with French doors to the garden, dining room, fitted kitchen, large utility room, study and integrated double garage. Upstairs there are five double bedrooms and two bathrooms. Further benefits include a secluded mature rear garden and off street parking for several cars accessed by a carriage driveway. Surbiton town centre and mainline station and offering good access to the A3 are all near by. Offered to market chain free.

Material Info: Brick Walls & Roof Tiles. Water / Electricity / Sewerage: Mains. Heating: Gas Mains. Mobile Coverage: Indoor: Good Outdoor: Good.

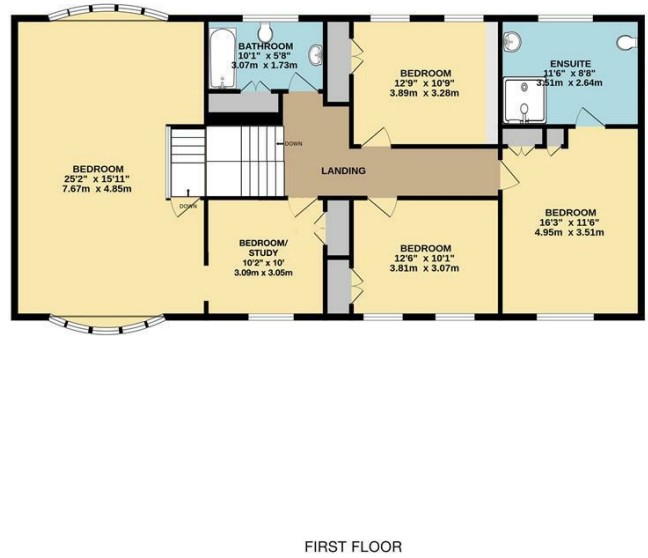
- Spacious Detached Family Home
- Five Bedrooms
- Kitchen / Utility
- Study
- Double Garage
- Dual Aspect Living Room
- Ensuite to Main Bedroom
- Dining Room
- Pretty and Mature Landscaped Rear Garden
- Off Street Parking for Several Cars

Floor Plan

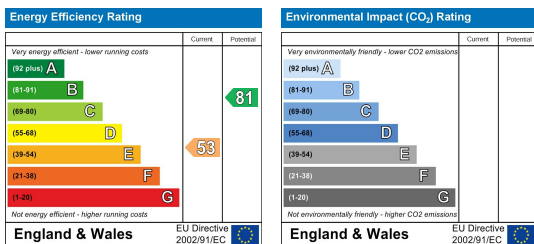


CHURCH MEADOW, SURBITON INTERNAL FLOOR AREA (APPROX.) 2800 sq ft/ 260.0 sq m

Whilst every attempt has been made to ensure the accuracy of this floor plan, measurement of doors, windows, rooms and any other items are approximate and no responsibility is taken for any error, omission or mis-statement. Made with Metropix © 2026.



Energy Efficiency Graph



These particulars, whilst believed to be accurate are set out as a general outline only for guidance and do not constitute any part of an offer or contract. Intending purchasers should not rely on them as statements of representation of fact, but must satisfy themselves by inspection or otherwise as to their accuracy. No person in this firm's employment has the authority to make or give any representation or warranty in respect of the property.