

Brumwell Avenue, SE18

£425,000

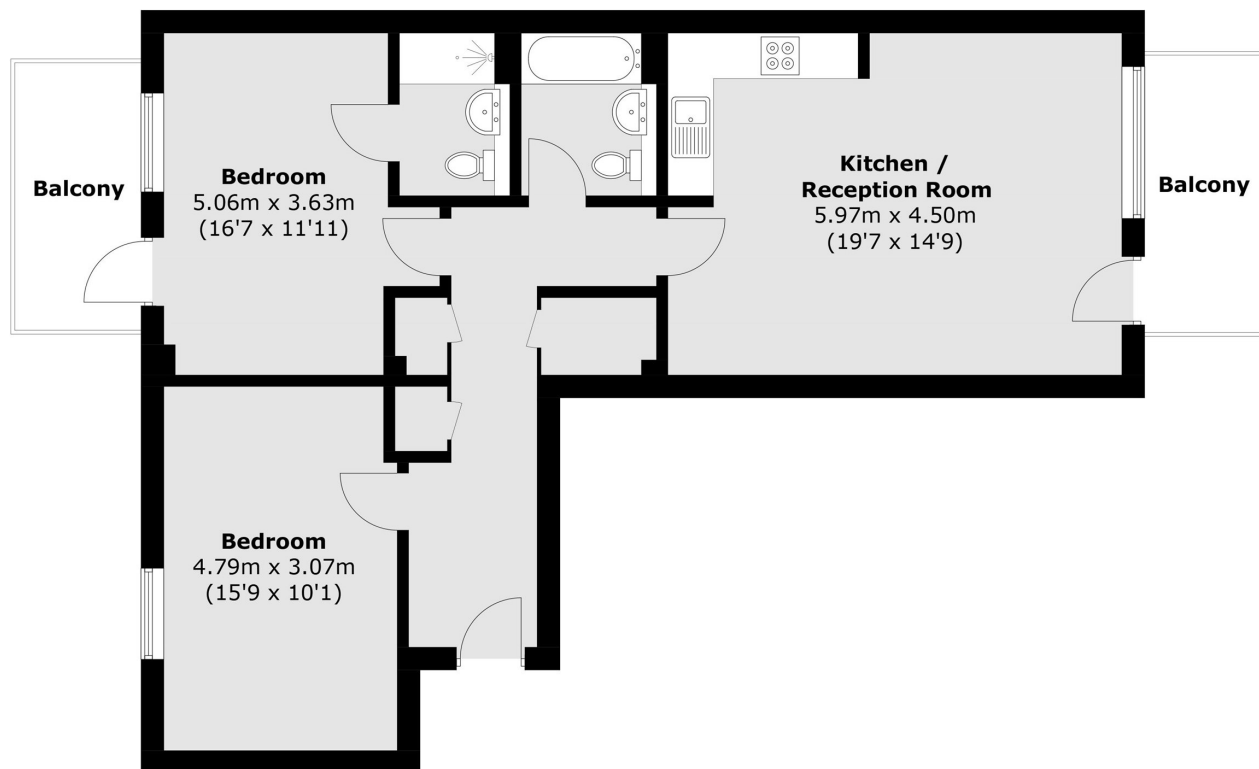
A beautifully presented two-bedroom, two-bathroom apartment located in the popular highly desirable development in SE18.

Situated in a quiet residential development minutes to the centre of Woolwich for the DLR and overhead station plus all the benefits of the town centre. The Elizabeth line is within close proximity and the property is 15 minutes to Canary Wharf and 25 minutes to Liverpool street.

Features

- Two Bedroom Apartment
- Two Balconies
- Chain Free
- Close To Elizabeth Line & Shops
- Open Plan Reception
- Two Bathrooms

Brumwell Avenue, London, SE18



Total area (approx.): 78.8 sq. m (848.2 sq. ft)
Balcony: 11.8 sq. m (127.0 sq. ft)