

Copas De  
Arboles Scotch Hill  
Road  
Taverham



# Copas De Arboles Scotch Hill Road

## Guide Price £900,000

### The home in the treetops — design-led living...

Copas de Arboles, translating evocatively as “treetops”, is a striking architect-designed home set along one of Taverham’s most sought-after private roads, occupying a peaceful position at the end of a quiet cul-de-sac. Surrounded by greenery and enjoying an elevated, almost treehouse-like outlook, this exceptional contemporary residence offers a rare sense of privacy while remaining within easy reach of Norwich city centre.

Designed and built by the current owners just a few years ago, the property unfolds across four thoughtfully arranged levels, combining cutting-edge efficiency with elegant, light-filled living spaces. A gated entrance opens onto a generous frontage providing ample parking alongside a substantial carport and integral garage, immediately setting the tone for the scale and quality found throughout.

Inside, the home is defined by its use of glass, natural light and flowing space. The heart of the house is a stunning open-plan kitchen, dining and living area, where expansive glazing and a large balcony create a seamless connection with the surrounding treetops. The kitchen itself is beautifully appointed with a central island and a full suite of integrated appliances, perfectly suited to both everyday living and entertaining.

The principal bedroom suite occupies its own level, offering a calm and private retreat with access to the garden, a dedicated dressing room and a luxurious en suite. Further bedrooms are equally well-proportioned, many with fitted storage and their own en suite facilities, while a versatile fourth bedroom or study enjoys particularly attractive views across the leafy setting.

Externally, the garden has been designed for ease and enjoyment, with a generous terrace ideal for outdoor dining, leading onto a well-kept lawn bordered by planting and mature trees that enhance the tranquil atmosphere.

Despite its peaceful setting, Copas de Arboles is superbly positioned for access to local amenities in Taverham, well-regarded schools and excellent transport links, with Norwich city centre just a short drive away, offering a wide range of shopping, dining and cultural attractions.

This is a highly individual, energy-efficient home that combines contemporary design with a truly special setting, creating a unique and compelling place to live.

### Agents notes...

A pre-recorded walkaround tour is available for this property

Local Authority  
Broadland

Council Tax Band G

EPC Rating B

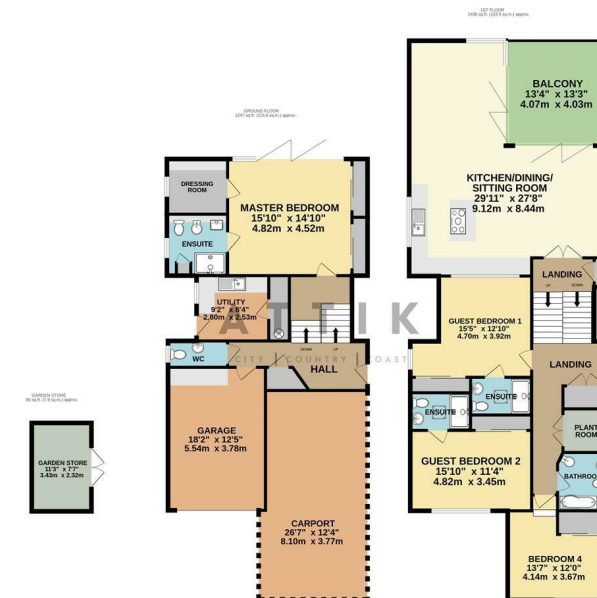


Contact

01603 964777

enquiries@attikccc.co.uk

www.attikccc.co.uk



TOTAL FLOOR AREA: 2770 sq. ft. (257.4 sq. m.) approx.  
Whilst every attempt has been made to ensure the accuracy of the floorplan contained herein, measurements of doors, windows, rooms and any other items are approximate and no responsibility is taken for any error, omission or mis-statement. This plan is for illustrative purposes only and should not be used as such for any prospective purchase. The services, systems and appliances shown have not been tested and no guarantee as to their operability or efficiency can be given.  
 Made with Metropix i2025