

Hackney Road, E2

£500,000

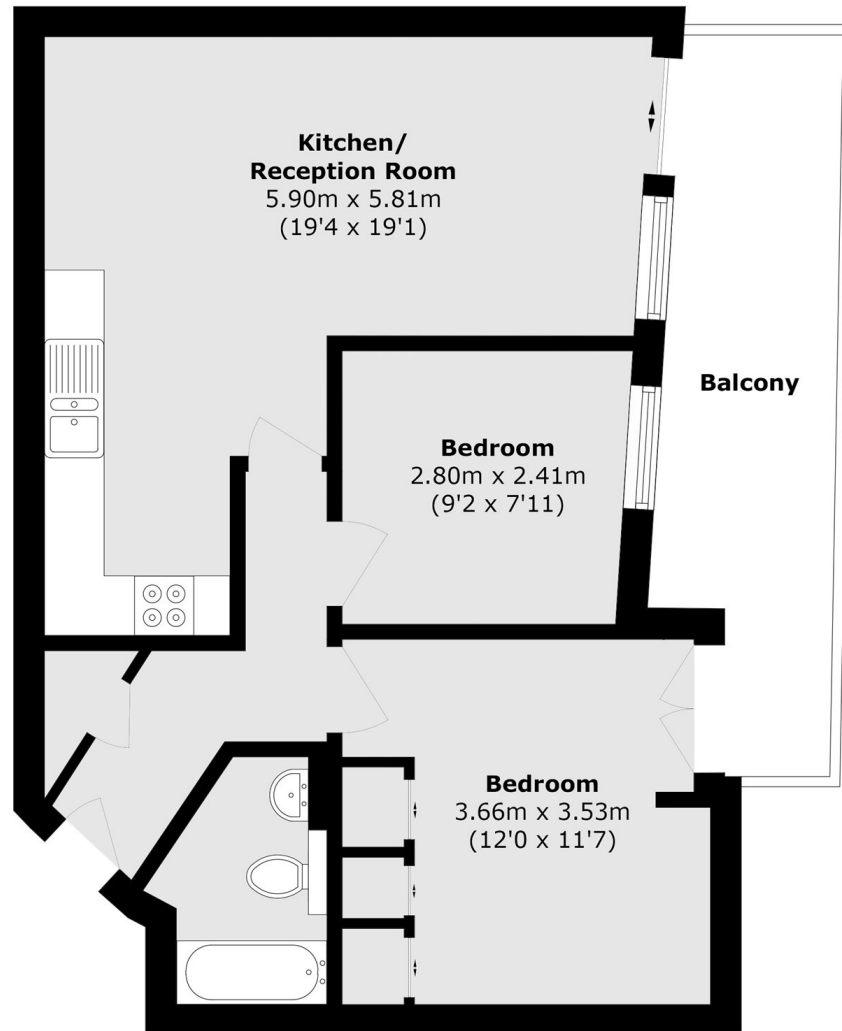
A beautifully presented two-bedroom apartment with a generous private balcony, set in the heart of Shoreditch. The open-plan living space is bright and contemporary, with floor-to-ceiling sliding doors opening onto a wide private south-facing balcony a natural extension of the living area. The principal bedroom has direct balcony access and fitted wardrobes; the second double bedroom suits a guest room, nursery or home office. The kitchen benefits from a brand new, warranted boiler and fridge.

Columbia Road Flower Market is moments away, with Brick Lane, Spitalfields and the City all within easy walking distance, alongside Shoreditch's renowned cafés, restaurants, bars and galleries. Old Street, Shoreditch High Street and Hoxton stations are all a short walk away, with Loverpool Street also within 20 minutes on foot for those

Features

- Two bedrooms
- One bathroom
- Private apartment length balcony
- Sought after location
- Modern interiors

Hackney Road, London, E2



Total area (approx.): 54.2 sq. m (583.4 sq. ft)
Balcony area (approx.): 8.83 sq. m (95.0 sq. ft)