



Brockwood Park 13A Station Road, Sheffield, S13 7AF

£925 Per month

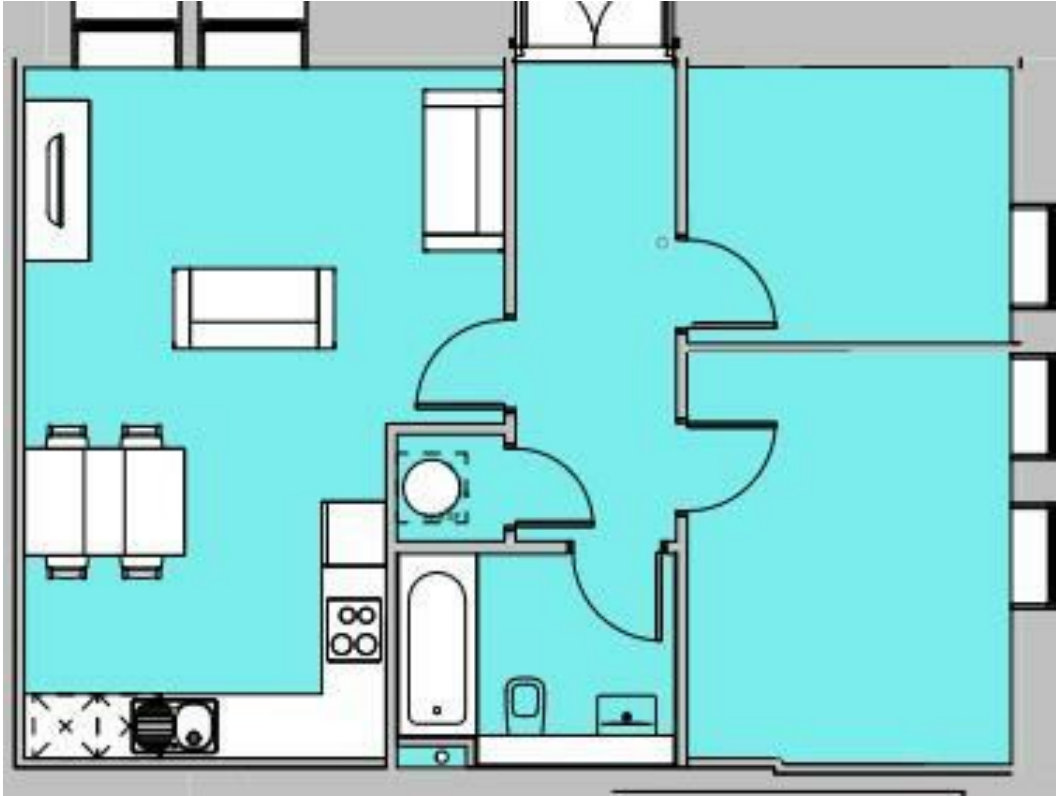
Nestled in the charming area of Brockwood Park, Sheffield, this delightful apartment offers a perfect blend of comfort and convenience. With two well-proportioned bedrooms, this residence is ideal for small families, couples, or individuals seeking a peaceful retreat. The apartment features a spacious reception room, providing an inviting space for relaxation and entertaining guests.

The property boasts a modern bathroom, ensuring that your daily routines are both comfortable and efficient. The well-designed layout maximises the use of space, creating a warm and welcoming atmosphere throughout.

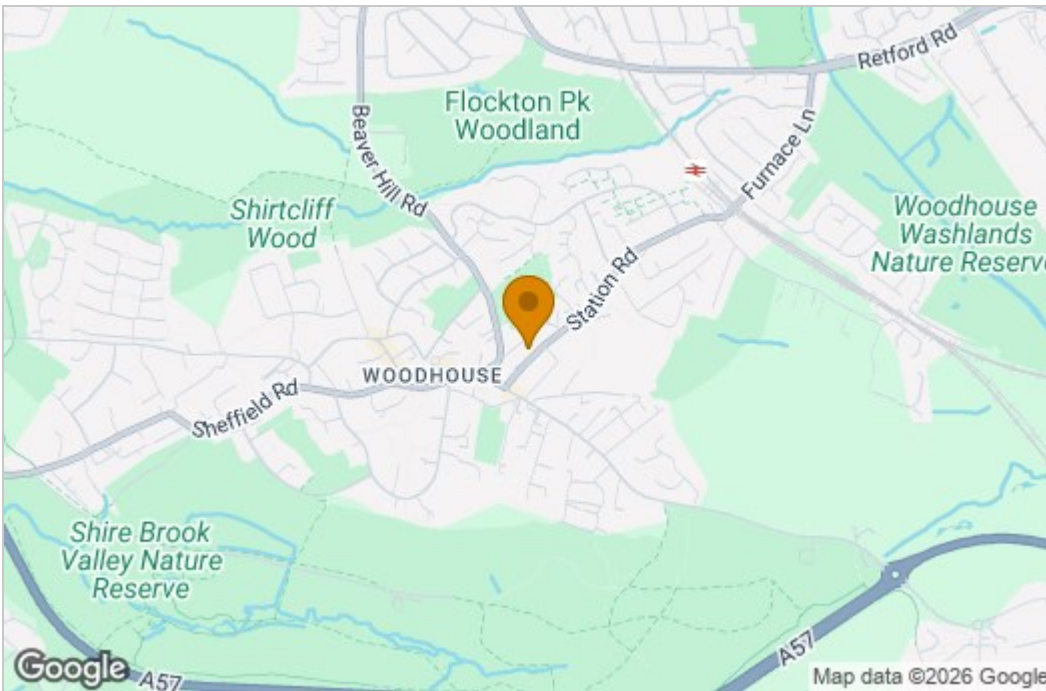
One of the standout features of this apartment is the property is the only apartment in the block to have its own private access door. There is also parking for one vehicle, a valuable asset in this bustling area. Residents will appreciate the ease of access to local amenities, parks, and transport links, making it an excellent choice for those who wish to enjoy the vibrant lifestyle Sheffield has to offer.

In summary, this apartment in Brockwood Park presents a wonderful opportunity for anyone looking to settle in a desirable location. With its appealing features and convenient parking, it is a property not to be missed.

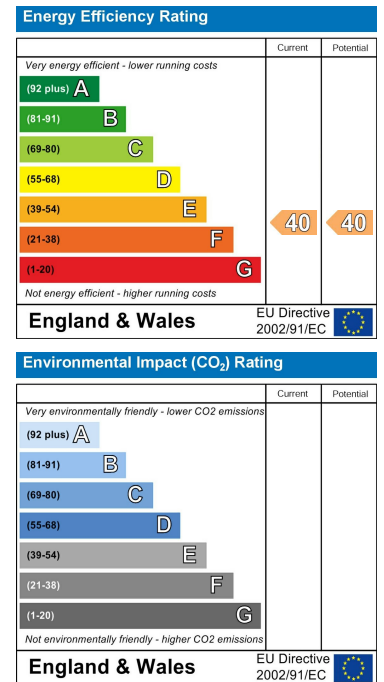
Floor Plan



Area Map



Energy Efficiency Graph



These particulars, whilst believed to be accurate are set out as a general outline only for guidance and do not constitute any part of an offer or contract. Intending purchasers should not rely on them as statements of representation of fact, but must satisfy themselves by inspection or otherwise as to their accuracy. No person in this firm's employment has the authority to make or give any representation or warranty in respect of the property.