



Bourne Place, W4

£2,100 Per calendar month

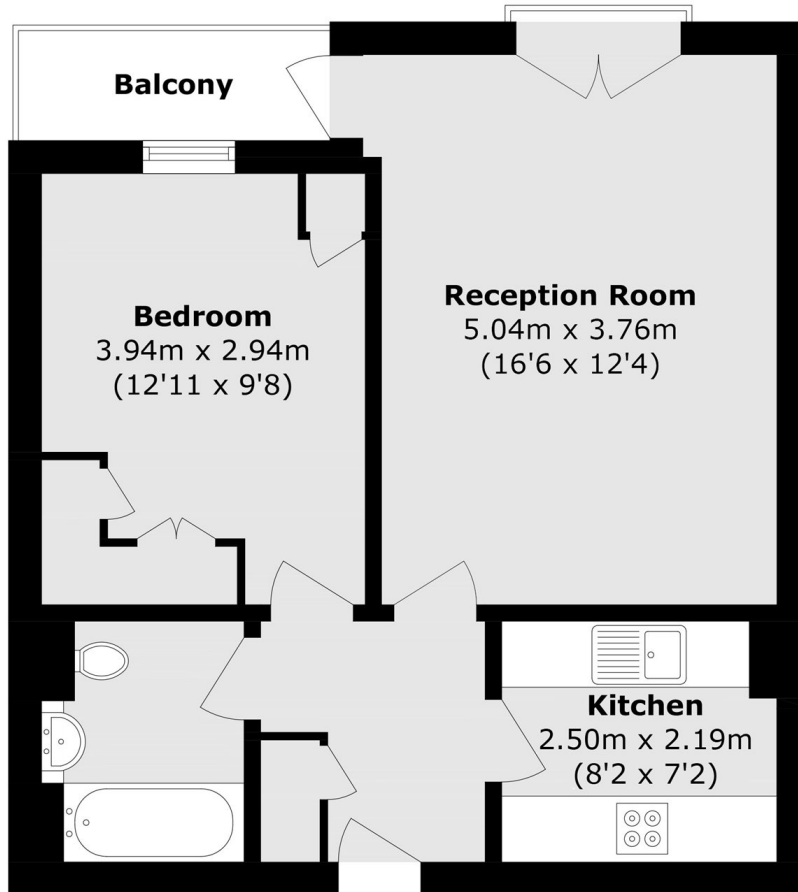
A wonderful one bedroom apartment with a private balcony situated in a popular development on Chiswick High Road.

Chatsworth Lodge is ideally situated on Chiswick High Road, close to its shops, bars and restaurants, with Turnham Green Underground station just 500 yards away.

Features

- Purpose Built
- Second Floor
- Private Balcony
- On Site Caretaker
- Underground Parking
- Central Location

Bourne Place, London, W4



Total area (approx): 46.2 sq. m (497.2 sq. ft)
Balcony area (approx): 2.8 sq. m (30.1 sq. ft)