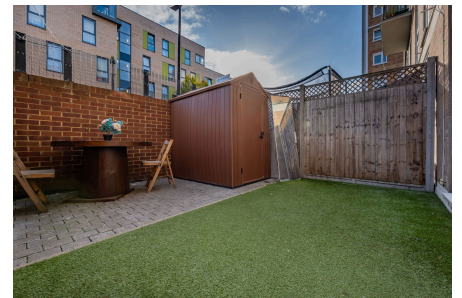


Brownfield Street, Tower Hamlets, E14

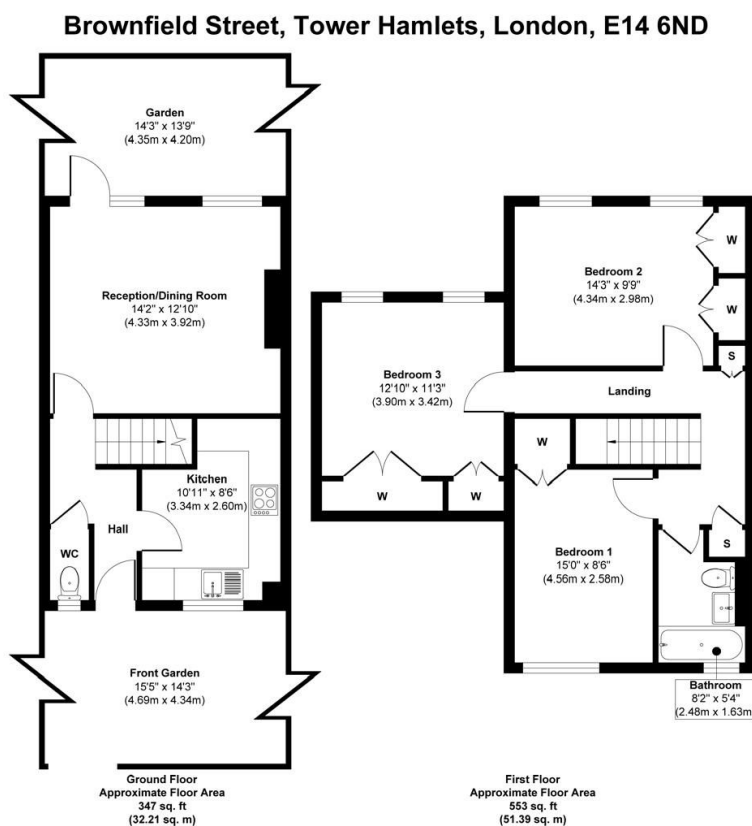
3 2 1



A spacious three-bedroom maisonette offering over 900 sq. ft. of living space with front and rear gardens and an allocated parking space. Featuring a modern kitchen, bright reception room, and two bathrooms, this well-presented home is ideally located near Canary Wharf and Langdon Park DLR.

Key Features

- Please Quote RF0924 for all Enquiries
- Book a viewing today!
- Spacious three-bedroom maisonette arranged over two floors
- Private front and rear gardens
- Allocated parking space included
- Modern fitted kitchen with integrated appliances
- Bright reception/dining room opening onto rear garden
- Contemporary family bathroom plus ground-floor WC
- Excellent transport links via Langdon Park & All Saints DLR
- Close to Canary Wharf, schools, shops, and local amenities



Approx. Gross Internal Floor Area 900 sq. ft / 83.60 sq. m

Illustration for identification purposes only, measurements are approximate, not to scale.

Produced by Elements Property