

Chas R

LOWE

Est. 1876

Flat 5, Ashwood Lodge, 1 Houndsden Road
£500,000 Share of Freehold



info@chaslowe.com

020 8440 6449

www.chaslowe.com

10 Church Hill Road East Barnet Herts EN4 8TB



Access via video entryphone system. Lift to first floor. Front door leading into U-SHAPED ENTRANCE HALL : video entryphone system, radiators, power points, storage cupboard housing alarm, utility cupboard housing water tank, insulated water cylinder.

RECEPTION ROOM 18'10 × 11'8

Double glazed sliding patio doors leading onto OWN BALCONY, two radiators, power points, open to

RECEPTION ROOM (previously bedroom 3) 14'0 × 10'1

Double glazed window overlooking front, single radiator, power points.

FITTED KITCHEN 11'8 × 9'0

Base and eye level units, roll top work surfaces to three sides, one and a half bowl sink and drainer, gas hob with extractor fan and light above, plumbing for dishwasher, electric double oven, integrated fridge freezer, double glazed frosted window, partly tiled walls, double radiator.

UTILITY ROOM 6'11 × 6'1

Plumbing for washing machine, base level units, stainless steel sink, cupboard with heated pipes and shelving, tiled walls.

GUEST CLOAKROOM : low level flush WC, wall mounted wash hand basin, single radiator, tiled walls.

BEDROOM 15'3 × 10'11

Double glazed window overlooking communal gardens with views over Winchmore Hill, single radiator, power points, door to

ENSUITE BATHROOM : concealed flush WC, bidet, vanity unit with wash hand basin, shower cubicle with Aqualisa unit, panelled bath with hot & cold mixer taps and shower attachment, tiled walls.

BEDROOM 13'11 × 10'2

Double glazed window overlooking front, single radiator, power points.

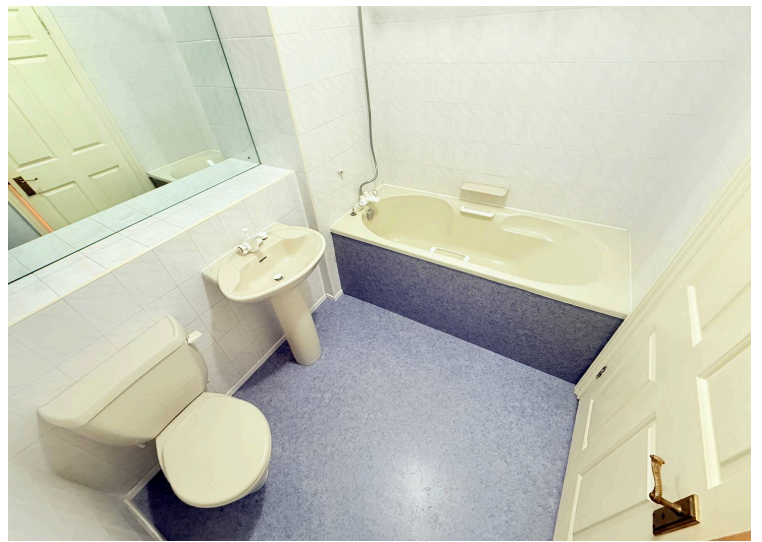
FAMILY BATHROOM : low level flush WC, pedestal wash hand basin, panelled bath with hot & cold mixer taps and shower attachment, tiled walls, single radiator.

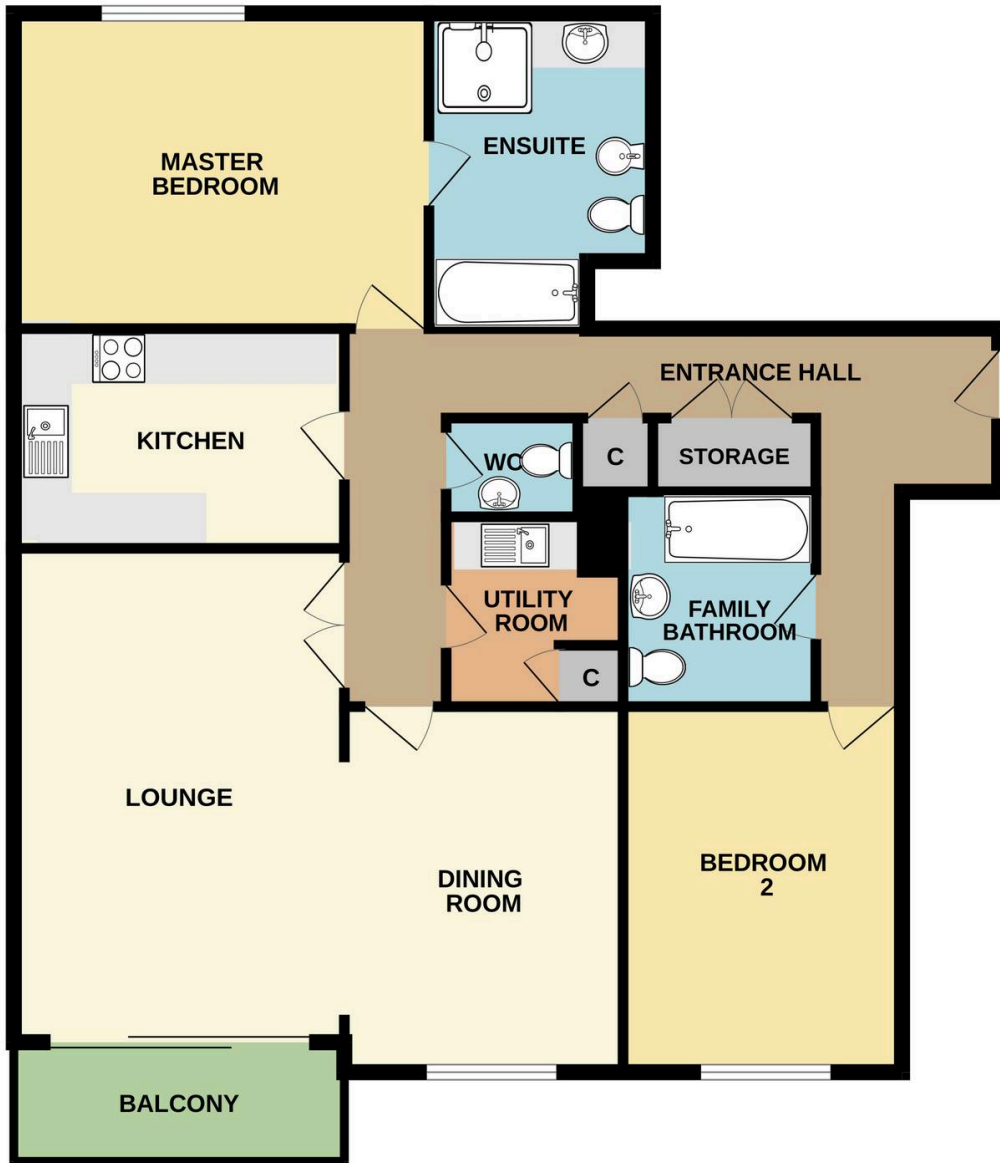
GARAGE EN BLOC (remote controlled electric door)

COMMUNAL GARDENS

SHARE OF FREEHOLD with lease being 125 years from 24 June 1987

SERVICE CHARGE : £2000 pa GROUND RENT : £45 pa





Whilst every attempt has been made to ensure the accuracy of the floorplan contained here, measurements of doors, windows, rooms and any other items are approximate and no responsibility is taken for any error, omission or mis-statement. This plan is for illustrative purposes only and should be used as such by any prospective purchaser. The services, systems and appliances shown have not been tested and no guarantee as to their operability or efficiency can be given.
Made with Metropix ©2026

Energy Efficiency Rating		Current	Potential
Very energy efficient - lower running costs			
(92+)	A		
(81-91)	B		
(69-80)	C	82	82
(55-68)	D		
(39-54)	E		
(21-38)	F		
(1-20)	G		
Not energy efficient - higher running costs			
England, Scotland & Wales		EU Directive 2002/91/EC	



THE PROPERTY MISDESCRIPTIONS ACT 1991 The Agent has not tested any apparatus, equipment, fixtures and fittings or services and so cannot verify that they are in working order or fit for the purpose. A Buyer is advised to obtain verification from their Solicitor or Surveyor. References to the Tenure of a Property are based on information supplied by the Seller. The Agent has not had sight of the title documents. A Buyer is advised to obtain verification from their Solicitor. Items shown in photographs are NOT included unless specifically mentioned within the sales particulars. They may however be available by separate negotiation. Buyers must check the availability of any property and make an appointment to view before embarking on any journey to see a property. 2/3/2026

- 1. Money Laundering Regulations:** Prospective purchasers will be required to provide identification documents at a later stage. We kindly request your cooperation to ensure there is no delay in progressing the sale.
- 2. General Information:** Whilst every effort is made to ensure these particulars are fair, accurate, and reliable, they are provided as a general guide only. If any aspect is of particular importance, please contact our office and we will be happy to verify the details for you, especially if you are planning to travel a significant distance to view the property.
- 3. Measurements:** All measurements are provided for guidance purposes only and should not be relied upon as exact.
- 4. Services:** We have not tested any services, systems, or appliances within the property. Prospective buyers are advised to obtain their own surveys or service reports prior to finalising any purchase.
- 5. Disclaimer:** These particulars are issued in good faith but do not constitute statements of fact or form part of any offer or contract. All information should be independently verified by prospective buyers or tenants. Neither the company nor its employees or agents are authorised to make or provide any warranties or representations regarding the property.

Anti-Money Laundering (AML)

Chas R Lowe Estates is required to carry out Anti-Money Laundering (AML) checks in accordance with regulations set by HM Revenue and Customs (HMRC) for all property transactions. It is a legal requirement for both buyers and sellers to complete these checks successfully before any transaction can proceed.

For buyers, where any part of the purchase funds are being provided as a gift, the individual(s) providing the gifted funds will also be required to undergo AML checks.

We utilise Coadjute's Assured Compliance service to undertake these AML checks. A fee of £27.00 plus VAT will be charged per individual for each AML check conducted.