

Top Floor, Flat 5, 31 Castle Road, Clevedon, BS21 7DA









£1,300 Per Calendar Month

marktempler

RESIDENTIAL LETTINGS





 PROPERTY TYPE	 LOCATION
Upper Floor Apartment	Upper Clevedon
 BEDROOMS	 RECEPTION ROOMS
2	1
 BATHROOMS	 WARMTH
1	Gas central heating & double glazing
 PARKING	 OUTSIDE SPACE
Garage and parking	None here
 EPC RATING	 COUNCIL TAX BAND
E	C

- Spacious two double bedroom accommodation
- Large Victorian converted top floor apartment
- Holding deposit - £300.00
- Security deposit - £1,500.00
- Tenancy Term - 12 months
- EPC Rating - D
- Council Tax Rating - C

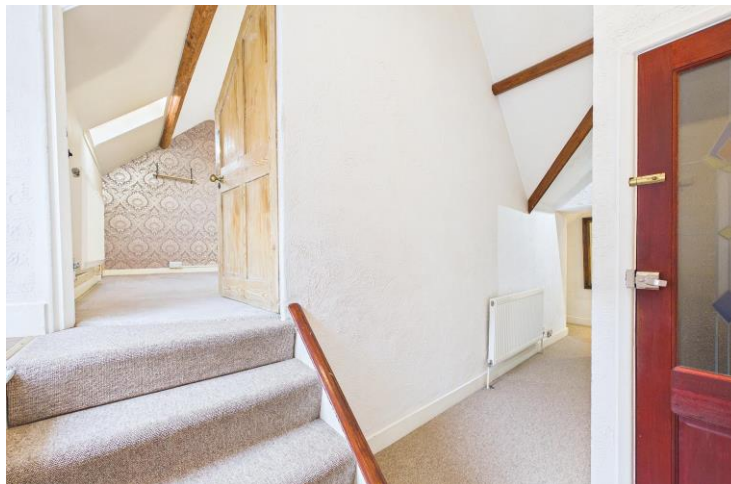
## What will it cost to rent this property?

When you submit a completed application form, we will discuss the details with the Landlord. If the Landlord is happy to proceed you will be required to pay:

1. Holding deposit, equivalent to 1 week's rent. This will reserve the property.

Once references are complete, you will be asked to pay:

2. First month's rent
3. Security deposit, equivalent to 5 weeks' rent (for rents under £50,000 per year). This covers damages or defaults on the part of the tenant during the tenancy.



Bright and spacious kitchen/breakfast room with appliances

Modern white bathroom suite with shower cubicle & freestanding bath

Highly sought after location of Walton St Mary

Close to Hill Road with its mix of independent shops and restaurants

## Available From

The property is available to move into now.



## Utilities

Mains water and drainage, mains electric supply, gas central heating. This information has been provided by the Landlord and is correct to the best of our knowledge.

## Broadband

Ultrafast broadband available with highest available download speed 1000 Mbps and highest available upload speed 100 Mbps.

## Mobile phone signal/coverage

Mobile coverage is good outdoor. Subject to your network.

For the latest properties and local news follow Mark Templer Residential Lettings on:



