



St. Vincents Lane, NW7

£450,000

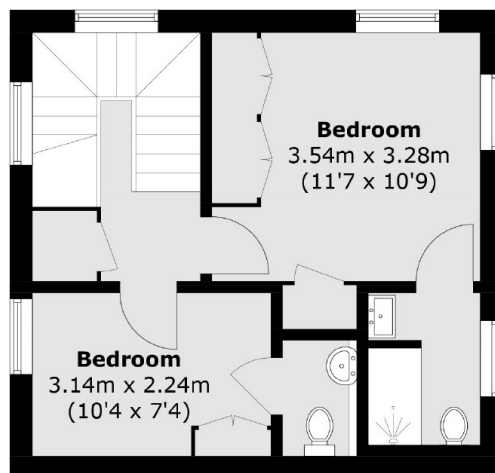
Arranged over three floors this beautiful apartment has high ceilings and lots of light, a large eat-in kitchen, two bathrooms, and stunning views over Totteridge Valley. The property has its own entrance and a private balcony.

Littleberry Court, St. Vincent's Lane sits just under a mile from Mill Hill East station (Northern line). Many amenities including restaurants, coffee shops and retail stores can be found along the popular Mill Hill Broadway.

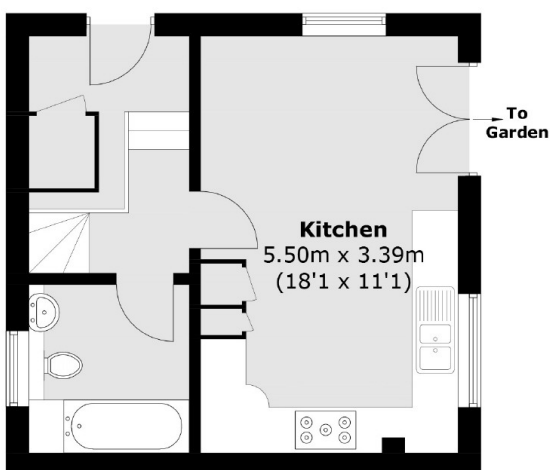
Features

- Two Bedrooms
- Two Bathrooms
- Eat-In Kitchen
- High Ceilings
- Chain Free
- Stunning Grounds

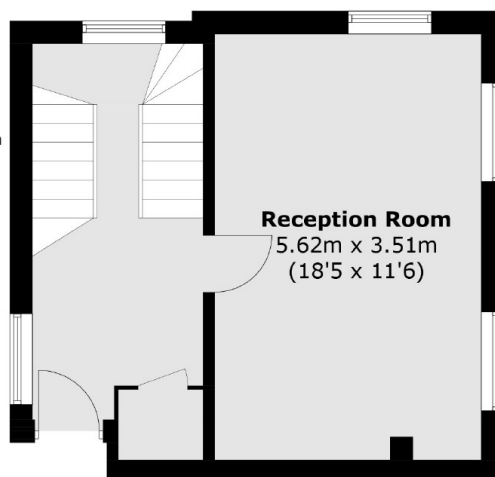
St. Vincents Lane, London, NW7



Second Floor



Ground Floor



First Floor

Total area (approx.): 96.8 sq. m (1,041.9 sq. ft)