



**WETHERELL**  
MAYFAIR'S FINEST PROPERTIES



## Rose & Crown Yard, SW1Y

£4,000 PCM

A well presented one bedroom duplex apartment in the heart of St James's.

A well presented one bedroom duplex apartment in the heart of St James's. This innovative designed one bedroom duplex apartment is situated on the first and second floor of this modern purpose built block in the centre of historic St James's.

The first floor comprises a reception room, striking glass-panelled staircase and a separate kitchen. The second floor has a large bedroom with built-in storage and en suite bathroom plus a separate storage cupboard.

Secure and private garaged parking is available under separate negotiation and is conveniently located off King Street.

---

Rose and Crown Yard is a quiet mews perfectly located moments from St James's Square, St James's Park, Green Park and the seemingly endless boutiques, shops, restaurants and bars of St. James's and Mayfair.

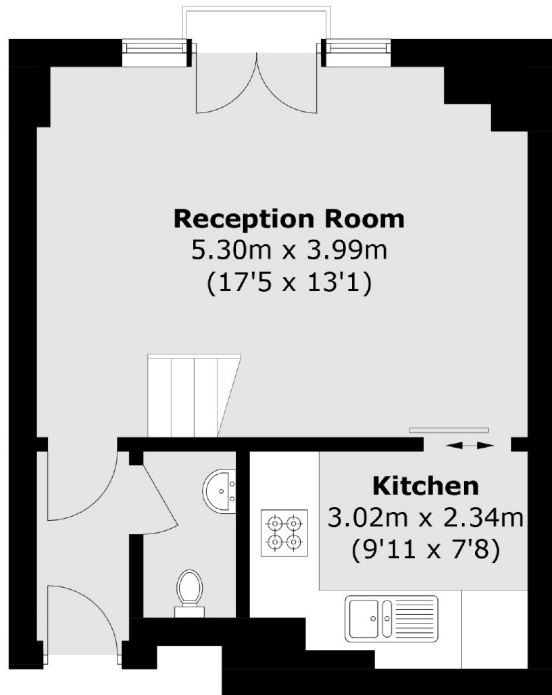


## FEATURES

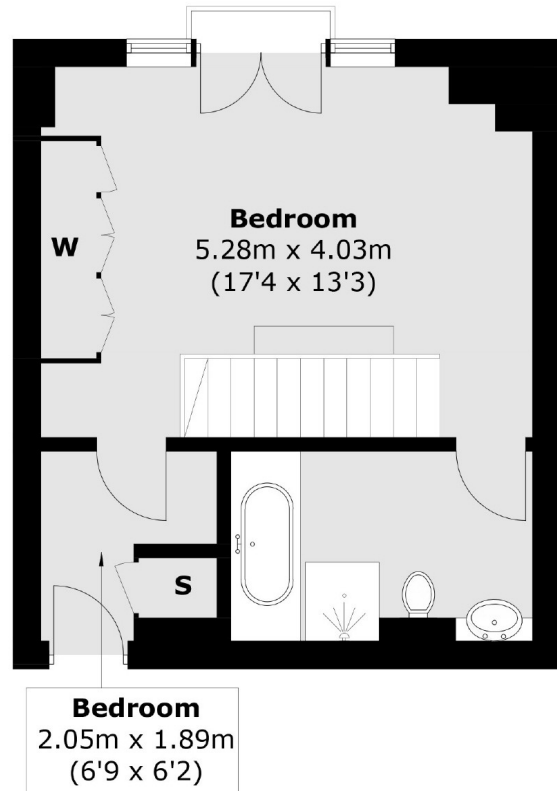
- One Bedroom • Duplex • Wooden Flooring • Prime St. James's Location • Large Modern Bathroom • Furnished •



# Rose & Crown Yard, London, SW1Y



**First Floor**



**Second Floor**

Total area (approx.): 67.0 sq. m (721.1 sq. ft)  
Balcony Area: 0.9 sq. m (9.7 sq. ft)