



## Frazer Nash Close, TW7

£2,495 Per calendar month

An exceptional three bedroom apartment offering refined, luxury living throughout. This exquisite home features a private roof terrace, three generous bedrooms, two modern bathrooms, access to an expansive communal roof terrace and a superb view across to the iconic London Eye and Shard.

In the heart of Isleworth, it is easily accessible to Isleworth mainline station. St.John's Gardens is around the corner.

### Features

- Three Bedrooms
- Two Bathrooms
- Communal Roof Terrace
- Underfloor Heating
- Private Balcony
- Great Transport Links

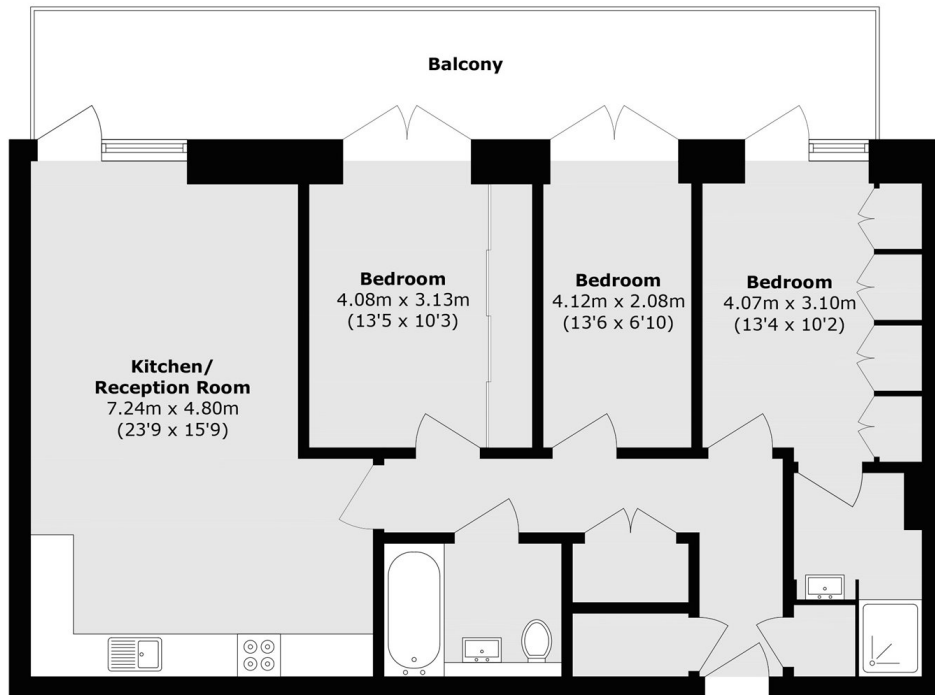


Frazer Nash Close, TW7





# Frazer Nash Close, Isleworth, TW7



Total area (approx.): 90.3 sq. m (972.1 sq. ft)  
Balcony area (approx.): 21.3 sq. m (229.3 sq. ft)