



Carmel Court, Holland Road, Manchester

£700 PCM

This cracking one-bedroom apartment is situated in the leafy Blackley area of Manchester. Close to Cheetham Hill and offering great transport links to the city, you really are in a fantastic location with everything you could possibly need, right on the doorstep.

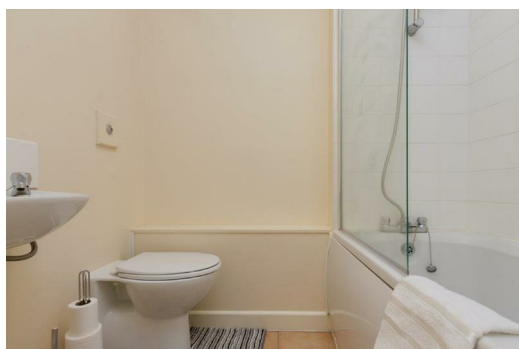
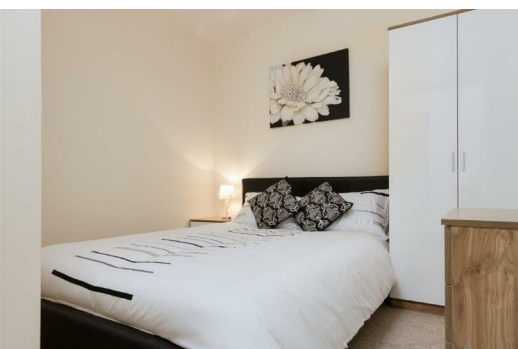
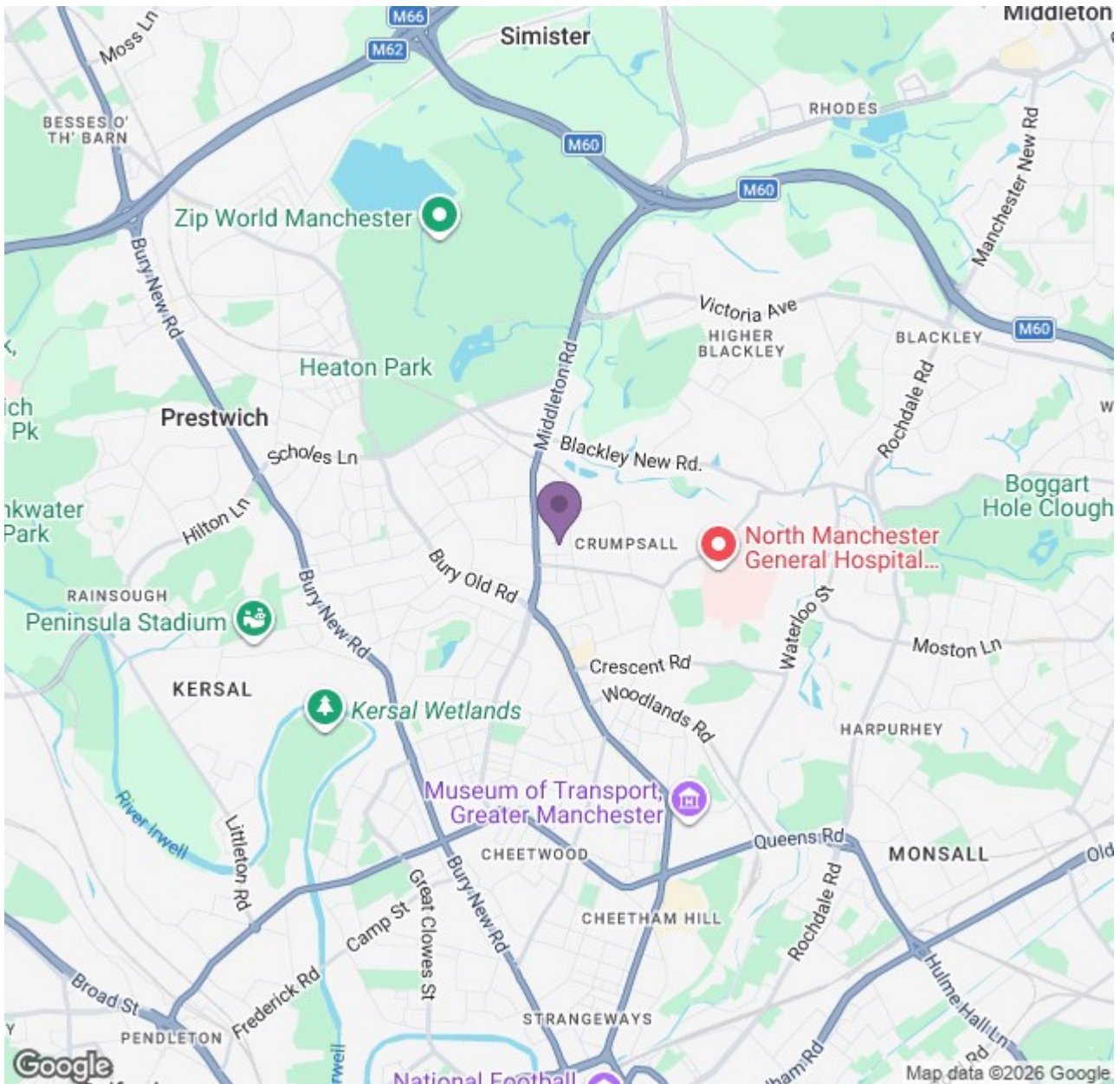
Take a step inside and you'll find a bright open-plan living room with a fully fitted kitchen. There's plenty of space inside so you'll have more than enough room to really make yourself at home. Outside there's plenty of street parking too - people who struggle with parking on a regular basis will know how much of a bonus this is.

If you're interested in having a closer look or have any questions, do get in touch.

And just so you know, the pictures for this apartment are for marketing purposes only. The internal fixtures, fittings and furnishings may vary.

Available Now
Deposit: £800
Council Tax Band: A
12 Month Tenancy





Energy Efficiency Rating			Environmental Impact (CO ₂) Rating		
Band	Score	Points	Band	Score	Points
A	92-100	10	A	84-88	10
B	81-91	9	B	74-83	9
C	69-80	8	C	64-73	8
D	55-68	7	D	54-63	7
E	49-54	6	E	44-53	6
F	39-48	5	F	34-43	5
G	35-38	4	G	24-33	4
H	29-34	3	H	14-23	3
I	21-28	2	I	9-13	2
J	1-20	1	J	1-8	1