



Charteris Road, Queens Park, NW6.  
£2,200 pcm

## Charteris Road, Queens Park, NW6.

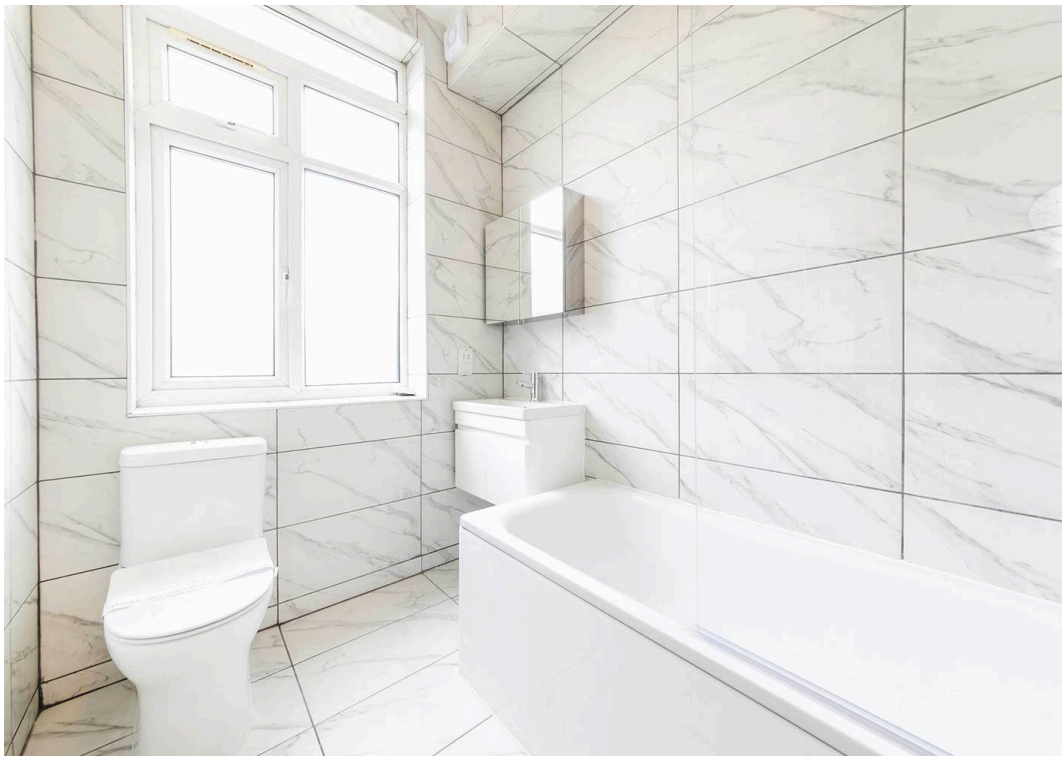
Located on the sought-after Charteris Road in the heart of Queens Park, this beautifully redecorated two-bedroom, two-bathroom apartment offers stylish and contemporary living.

The property features two generous double bedrooms, both with space for desks, making it ideal for professionals working from home. A bright open-plan reception and kitchen area creates an excellent entertaining space, enhanced by an abundance of windows throughout the apartment which flood the home with natural light. Further benefits include two modern bathrooms, a fresh contemporary finish throughout, and well-balanced accommodation.

Charteris Road is superbly positioned for transport links, with both Queen's Park Underground & Overground Station (Bakerloo Line and London Overground) and Kilburn Park Underground Station just a short walk away, providing fast and convenient access into Central London and beyond. Numerous local bus routes are also nearby. Residents can enjoy the vibrant amenities of Queen's Park, Salusbury Road, and West Hampstead, with an excellent selection of cafés, restaurants, shops, gyms, and green spaces all within easy reach.

Please note this property is owned by a director at Black Katz.

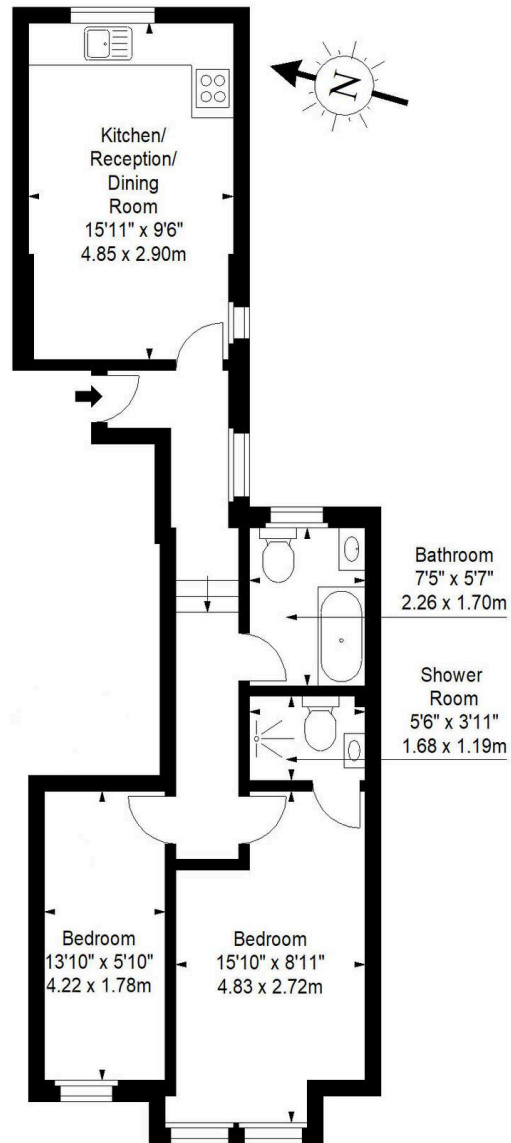




# Charteris Road, NW6

Approx. Gross Internal Area \*

521 Ft<sup>2</sup> - 48.40 M<sup>2</sup>



## First Floor

Every attempt has been made to ensure the accuracy of this floor plan however, measurements are approximate and for illustration purposes only. Measured in accordance with the RICS code of measuring practice. Not to scale



## Black Katz

22 West Hampstead Mews, London - NW6 3BB

02073285000 • [Thomas@blackkatz.com](mailto:Thomas@blackkatz.com) • [blackkatz.com/](http://blackkatz.com/)