



CHARLES KNIGHT  
ESTATE AGENTS



## 21 Nectarine Way

, London, SE13 7LX

£2,800 Per month

Nestled in the desirable location of Nectarine Way, London, this charming three-bedroom maisonette presents an excellent opportunity for families or groups of two seeking a comfortable and well-appointed home. The property boasts a private entrance, ensuring a sense of exclusivity and security.

Upon entering, you will find a welcoming reception room that overlooks a delightful decked patio and garden area, perfect for enjoying the outdoors. The modern kitchen is equipped with a stainless-steel oven, gas hob, and fridge/freezer, alongside a utility room that houses a washing machine and provides convenient access to the garden. Ample storage is available throughout the property, including a cupboard for the electric meter and under-stair storage space.

The maisonette features three well-proportioned bedrooms, providing plenty of space for relaxation and rest. The bathroom is fitted with a white two-piece suite, complete with a shower over the bath, and there is a separate W.C. for added convenience. The property benefits from neutral decor, double glazing, and central heating, ensuring a warm and inviting atmosphere.

Situated within close proximity to local amenities, including a Tesco supermarket, Lewisham station, and the Docklands Light Railway, this home offers excellent transport links. Additionally, the picturesque Blackheath Common, Royal Greenwich, and the vibrant Deptford High Street are just a short walk away, providing a wealth of leisure and shopping options.

### Viewing

Please contact our Lewisham Office on 02088 524441 if you wish to arrange a viewing appointment for this property or require further information.



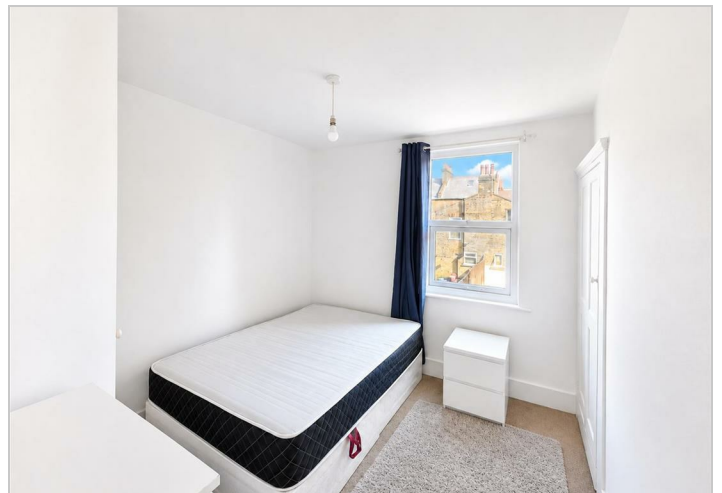
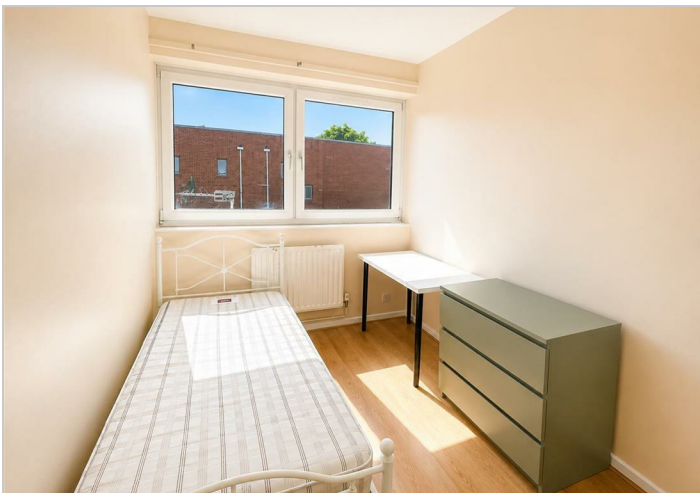
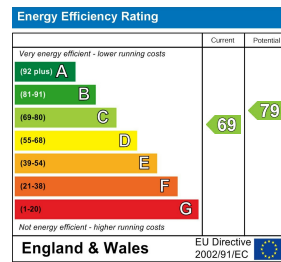
## Floor Plan



## Area Map



## Energy Efficiency Graph



These particulars, whilst believed to be accurate are set out as a general outline only for guidance and do not constitute any part of an offer or contract. Intending purchasers should not rely on them as statements of representation of fact, but must satisfy themselves by inspection or otherwise as to their accuracy. No person in this firm's employment has the authority to make or give any representation or warranty in respect of the property.