



Flat 6, 185 Landguard Road, Southsea, PO4 9DS

Conveniently situated some half a mile from Southsea Seafront, this spacious, purpose-built TWO DOUBLE BEDROOM FIRST FLOOR RETIREMENT FLAT (55+) benefits from a sunny communal garden, secure entry, electric heating, double-glazing and two (non-allocated) residents' parking spaces. The apartment is one of just six units within a two-storey, mid-1980s' development occupying a corner position at the junction of Landguard Road with Hatfield Road - a little to the north of Highland Road, some one mile from Southsea Town Centre and within comfortable reach of a wide range of public amenities including: local shops and eateries, bus services, main-line station, Milton and Bransbury parks, St Mary's Hospital, etc.



Available now on the open market with the further asset of NO ONWARD CHAIN, Flat 6 will reward a modest element of refurbishment, presenting an incoming owner with a blank canvas for their own tastes and ideas, and representing, in our view, exceptional value for money. Full particulars are given as follows and early enquiry is invited:

Covered approach (via the Car Port) to glazed main door, with SECURITY ENTRY SYSTEM to:

OPEN-PLAN COMMON LOBBY

Having stairs to first floor together with direct access to the communal rear garden.

FIRST FLOOR OPEN LANDING

Leading to:

FLAT 6

ENTRANCE HALL

Artex ceiling with access, via hatch and ladder, to Loft Space. Built-in cloaks and storage cupboard. Built-in airing/linen cupboard with slatted shelf and lagged hot water tank. Electric panel heater. Circuit breakers. Security intercom telephone.

SHOWER ROOM & W.C.

8'1 x 5'10 (2.46m x 1.78m) (formerly with bath). White suite comprising: pedestal handbasin with mixer tap, low flush w.c., and tiled shower cubicle with 'Mira' mixer. Coved ceiling.

KITCHEN

11'10 x 5'11 (3.61m x 1.80m)
Range of fitted base and wall cupboards, work surfaces with tiled surround, 1½ bowl single drainer stainless steel inset sink with mixer tap. Electric cooker point. Plumbing for washing machine. UPVC double-glazed window to front elevation. Coved, Artex ceiling.

BEDROOM ONE

13'3 x 11'6 (4.04m x 3.51m)
Coved, Artex ceiling. UPVC double-glazed window to rear elevation. Night storage radiator.

BEDROOM TWO

11'11 x 11'9 (3.63m x 3.58m)
Coved, Artex ceiling. Suspended square bay window to front elevation having UPVC double-glazing. Night storage radiator.

LIVING ROOM

14'4 x 11'0 (4.37m x 3.35m)

Coved, Artex ceiling. UPVC double-glazed window to front elevation. Two night storage radiators.

OUTSIDE

To the south side of the building is a generous COMMUNAL GARDEN, with lawn, walled surround, planted borders, rotary washing line, refuse bins, and side pedestrian access.

DOUBLE-WIDTH CAR PORT

For use by residents on a non-allocated basis.

GENERAL INFORMATION

Tenure: Leasehold. A new, 99 year lease will be granted upon completion.
Service Charge: £1,540.80 per annum.
Ground Rent: Nil
Council Tax: Band 'A' - £1,527.80 per annum (2026-27)

EPC

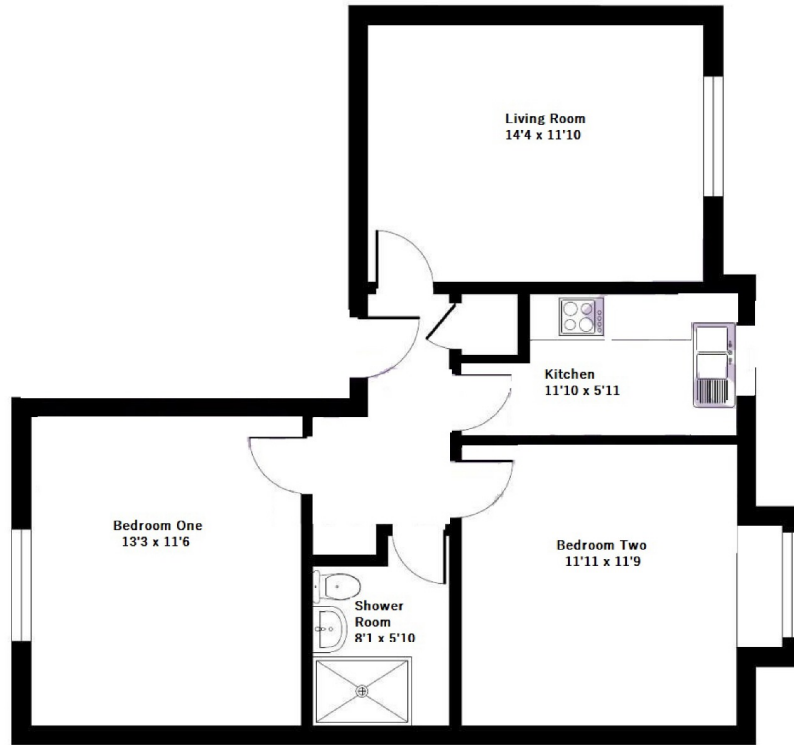
Energy Rating 'D' (Floor Area 60 sq m approx).

VIEWING

By appointment with SOLE AGENTS, D. M. NESBIT & CO. (08034/055400)



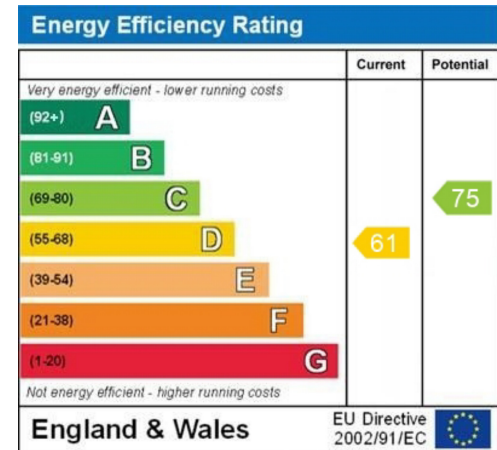




For identification only - Not to scale

SECOND FLOOR

Floor plan produced in accordance with RICS Property Measurement 2nd Edition, Incorporating International Property Measurement Standards (IPMS2 Residential).



WWW.EPC4U.COM

You may download, store and use the material for your own personal use and research. You may not republish, retransmit, redistribute or otherwise make the material available to any party or make the same available on any website, online service or bulletin board of your own or of any other party or make the same available in hard copy or in any other media without the website owner's express prior written consent. The website owner's copyright must remain on all reproductions of material taken from this website.

D.M.Nesbit & Company 7 Clarendon Road, Southsea, Portsmouth Hampshire PO5 2ED T: 023 9286 4321 www.nesbits.co.uk

These Particulars are believed to be correct, but their accuracy is not guaranteed and they do not form any part of any contract

