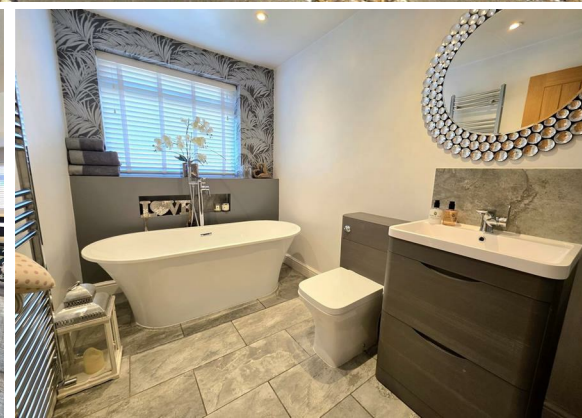
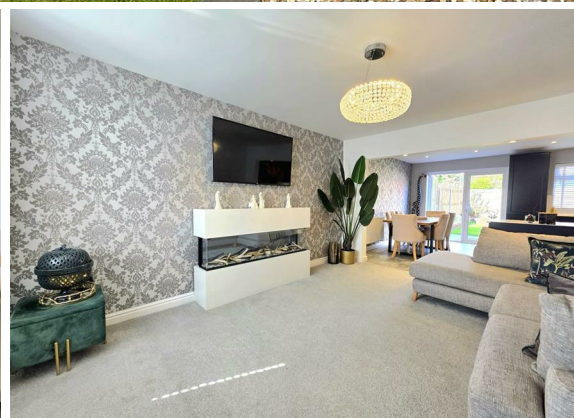
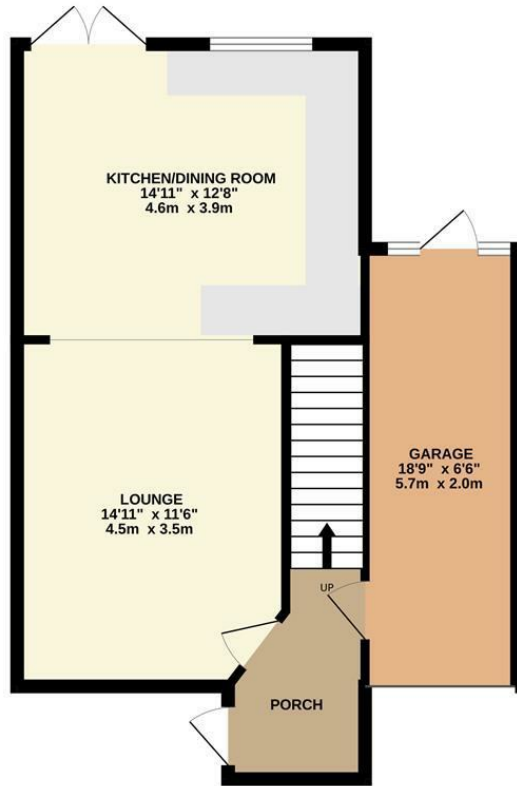




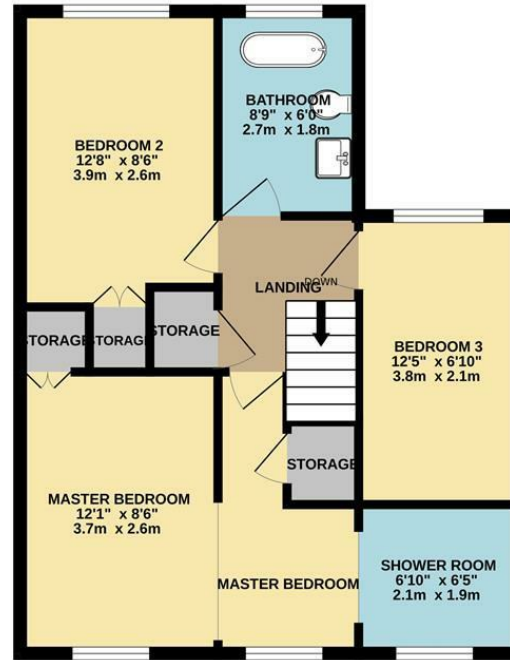
**3 Bed
House - Semi-
Detached
located
in Barnburgh**
Guide price £250,000



GROUND FLOOR
558 sq.ft. (51.8 sq.m.) approx.



1ST FLOOR
530 sq.ft. (49.2 sq.m.) approx.



TOTAL FLOOR AREA: 1087 sq.ft. (101.0 sq.m.) approx.

Whilst every attempt has been made to ensure the accuracy of the floorplan contained here, measurements of doors, windows, rooms and any other items are approximate and no responsibility is taken for any error, omission or mis-statement. This plan is for illustrative purposes only and should be used as such by any prospective purchaser. The services, systems and appliances shown have not been tested and no guarantee as to their operability or efficiency can be given.
Made with Metropix ©2025

Energy Efficiency Rating		Current	Potential
Very energy efficient - lower running costs			
(92 plus)	A		82
(81-91)	B		
(69-80)	C		
(55-68)	D	66	
(39-54)	E		
(21-38)	F		
(1-20)	G		
Not energy efficient - higher running costs			
England & Wales		EU Directive 2002/91/EC	

DIRECTIONS

CONTACT

Unit 6
Century 2 Business Centre 3 Dearne
Lane
Manvers
Rotherham

E: info@burrowsresidential.co.uk
T: 07507 905644

