



Middle Park Avenue, SE9

£150,000

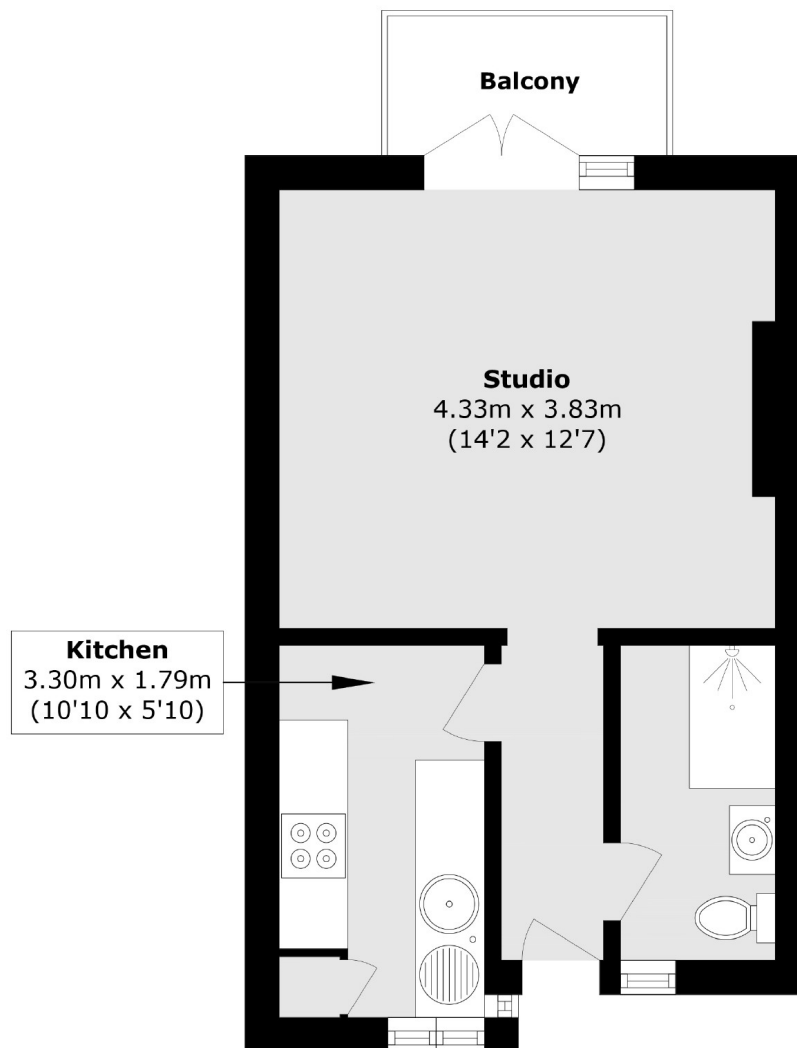
This bright and airy studio flat offers a practical and well-designed living space in the heart of Eltham. A spacious open-plan studio room with a fitted kitchen opens onto a private balcony, while a modern shower room completes the accommodation. Perfect for first-time buyers or investors, the flat combines comfort with convenience in a popular residential location.

Excellent transport links via Mottingham and Eltham stations provide fast connections to London Bridge, Charing Cross, and Cannon Street. Local bus routes also offer easy access to Lewisham for the DLR. The wide green spaces of Eltham Park and Oxleas Woods are close by, while Eltham High Street, with its shops, cafés, and restaurants, offers everyday convenience and a lively community feel.

Features

- Ideal First Home/ Investment
- Open-Plan Living Area
- Modern Shower Room
- Residents Parking
- Private Balcony
- Excellent Transport Links

Middle Park Avenue,
London, SE9



Total area (approx.): 30.0 sq. m (322.9 sq. ft)

Balcony area (approx.): 2.9 sq. m (31.2 sq. ft)