

7, Hendrick Crescent, Sovereign Park, Oteley Road, Shrewsbury, SY2 6JF
£1,200 Per Month



7, Hendrick Crescent, Sovereign Park, Oteley Road, Shrewsbury, SY2 6JF

£1,200 Per Month

VIRTUAL TOUR AVAILABLE: Immaculate three bedroom end of terrace house benefitting from a landscaped rear garden, private driveway for two cars and a lovely outlook. The property is located within a popular modern development, a short distance from an excellent range of amenities, Meole Brace retail park, road links via the bypass and only a couple of miles from Shrewsbury town centre.

Available: 24/03/26

Description

Comprising: Entrance hall with WC, kitchen with integrated appliances including fridge freezer, dishwasher, oven and gas hob, under counter washing machine, living dining room with large understairs storage cupboard and glazed doors to rear garden. Stairs to landing with storage cupboard, two double bedrooms - one with en-suite shower room and built in storage, third bedroom, bathroom with shower over bath. Rear garden with large patio and shed, steps to lawn. Double Glazing, Gas Central Heating. Parking for two vehicles. EPC B.



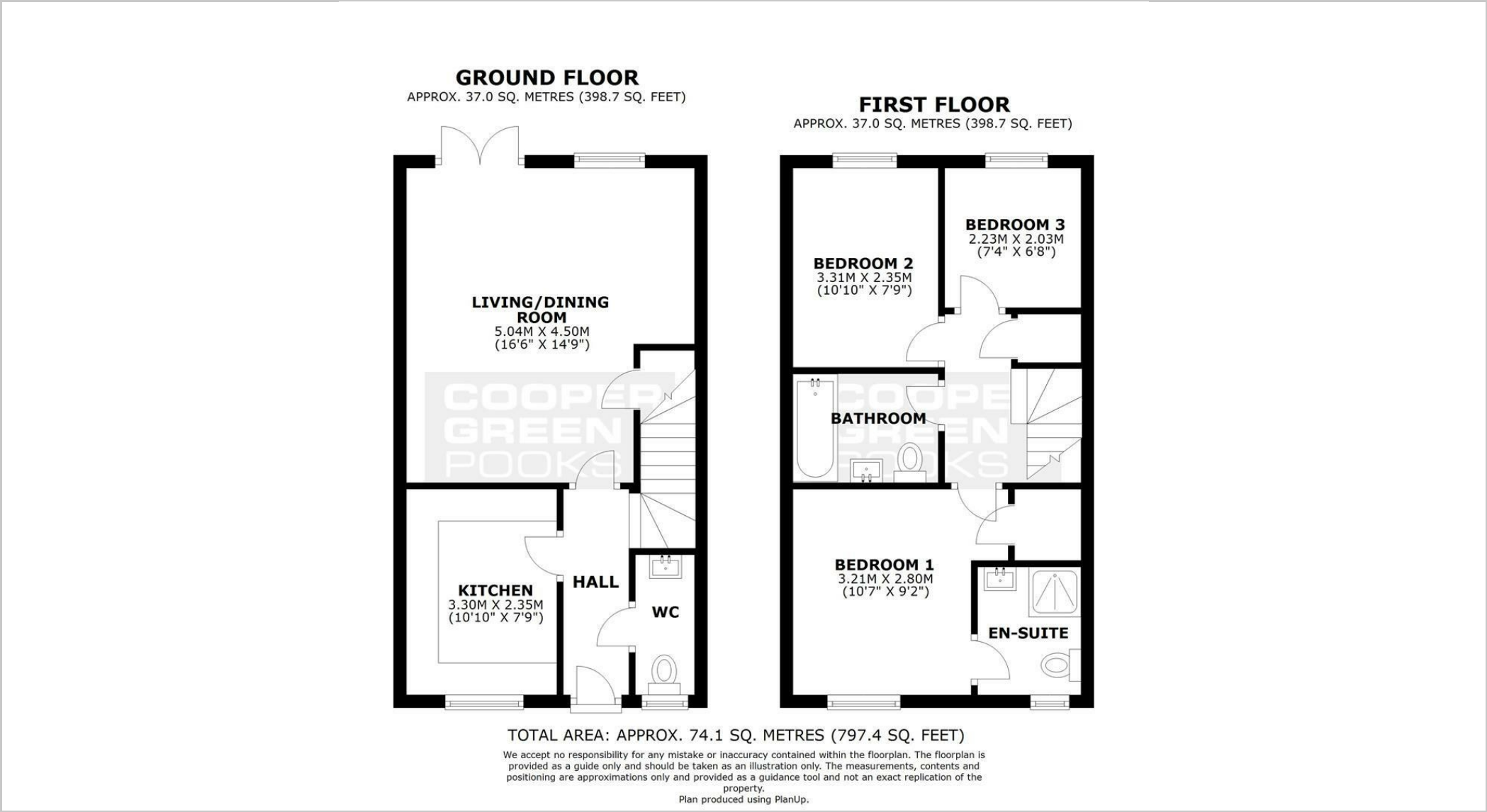
Unfurnished

Council Tax Band: C

Available: 24th March 2026

EPC: B

Floor Plans



These particulars, whilst believed to be accurate are set out as a general outline only for guidance and do not constitute any part of an offer or contract. Intending purchasers should not rely on them as statements of representation of fact, but must satisfy themselves by inspection or otherwise as to their accuracy. No person in this firms employment has the authority to make or give any representation or warranty in respect of the property.