



SCAN ME

Flat 9 Glenwood, 68 Titchfield Park Road, Titchfield Park, Fareham, Hampshire, PO15 5RN.



For more information

**01489 570019**  
[www.sbk4homes.com](http://www.sbk4homes.com)

# Flat 9 Glenwood 68 Titchfield Park Road

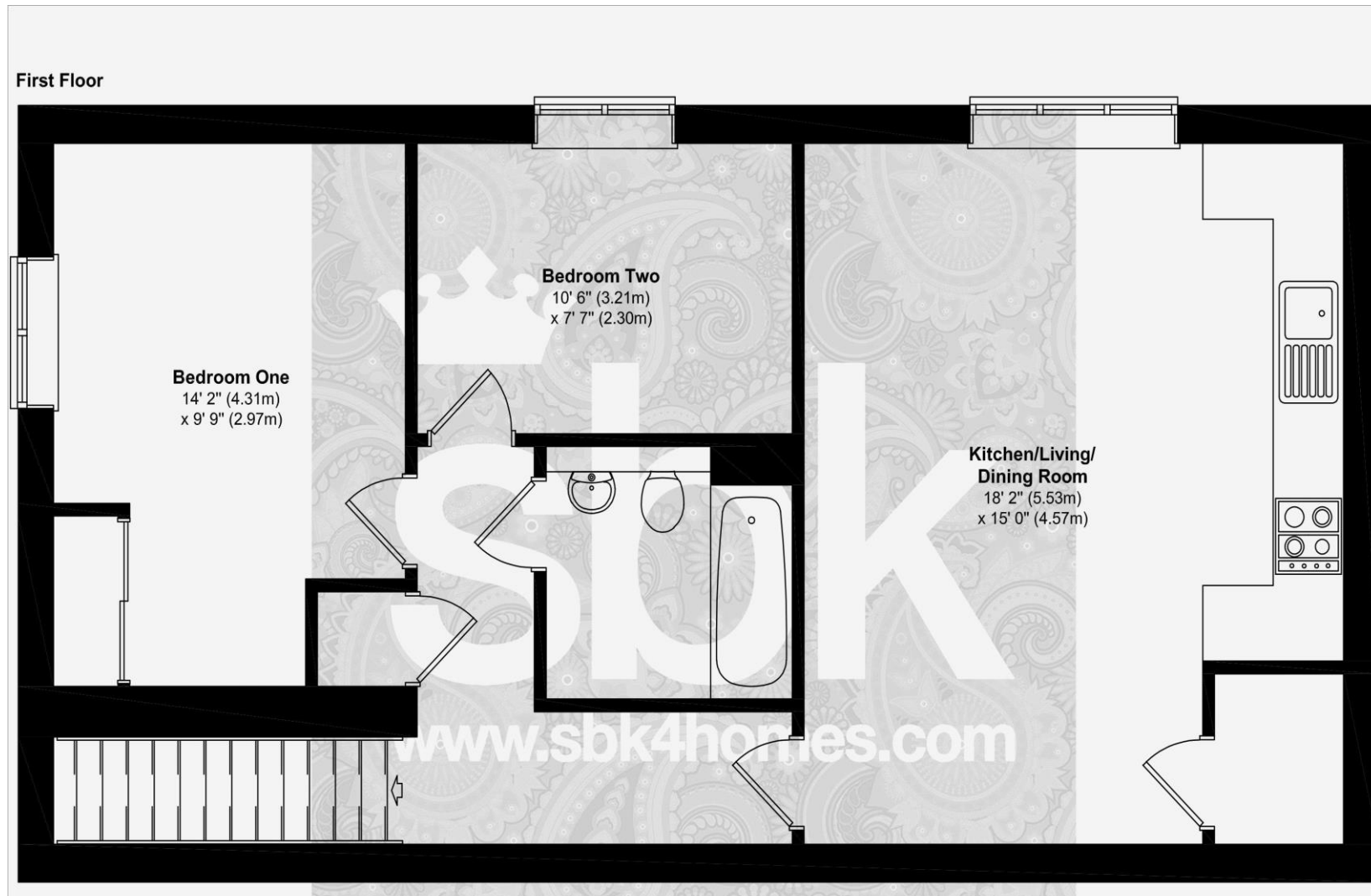
Titchfield Park, Fareham, PO15 5RN.

£1,200 PCM

- Modern Apartment Built in 2023
- Two Well Proportioned Bedrooms
- Small Private Development of Just Nine Properties
- Triple Glazed Windows
- Generous Open Planned Living Area
- Fully Tiled Bathroom
- Maintained Communal Gardens
- Allocated Parking for Two Cars
- Long Term Let
- Available From Beginning of April



Flat 9 Glenwood, 68 Titchfield Park Road, Titchfield Park, Fareham, Hampshire, PO15 5RN. £1,200 PCM



**Approx. Gross Internal Floor Area 657 SQ FT 62 SQ Metres**

Whilst every attempt has been made to ensure the accuracy of the floor plans, measurements of doors, windows and rooms are approximate and no responsibility is taken for any error, omission or mis-statement. These plans are for representation purposes only and should be used as such. The services, systems and appliances listed in this specification have not been tested by Agency Assist and no guarantee as to their operating efficiency can be given.



#### ADDITIONAL INFORMATION

Council Tax Band  
Band B which is payable to Fareham Borough Council

Availability Date  
The property is available from the end of March.

Length of Let  
Initially offered on either a six or twelve month tenancy but the landlord's intentions are for the property to be let on a long term basis.

Pets  
The landlord for this property has specified that pets are not permitted.

Energy Performance Certificate  
The rating for the property is B. To obtain a full report of the EPC please contact SBK.

Parking  
The property has TWO allocated parking spaces



For more information

**01489 570019**  
[www.sbk4homes.com](http://www.sbk4homes.com)