



**POOLE  
TOWNSEND**



# 30 Hampsfell Grange, Grange over Sands

£110,000

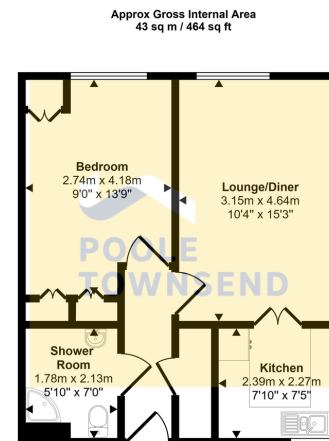
1 1 1





- Located in a highly regarded over-60s independent living development
- Impressive first-floor apartment, stylishly upgraded throughout
- Spacious double bedroom with built-in furniture
- Well-appointed kitchen and contemporary shower room
- Excellent communal facilities including residents' lounge, laundry room, and landscaped gardens
- Prime position in the heart of Grange-over-Sands
- Light and airy feel with modern, comfortable living spaces
- Bright and welcoming lounge/diner
- 24-hour emergency pull-cord system for added reassurance
- Leasehold. Council Tax Band C





Floorplan

This floorplan is only for illustrative purposes and is not to scale. Measurements of rooms, doors, windows, and any items are approximate and no responsibility is taken for any error, omission or mis-statement. Icons of items such as bathroom suites are representations only and may not look like the real items. Made with Made Snappy 360.

Situated within a highly regarded independent living development for the over-60s, in the heart of Grange-over-Sands, this impressive first-floor apartment has been stylishly upgraded to offer modern, comfortable living. Wonderfully light and airy throughout, the property provides generously proportioned accommodation ideal for secure and relaxed retirement living. The layout comprises a spacious double bedroom with built-in furniture, a bright and welcoming lounge/diner, a well-appointed kitchen, and a contemporary shower room. Residents enjoy the reassurance of 24-hour emergency pull-cords, along with access to excellent communal facilities including a residents' lounge, laundry room, and beautifully maintained communal gardens. **Please note: This is an over-60s development. If two people are purchasing, the second buyer must be over 55.**

Visit us at  
[www.pooletownsend.co.uk](http://www.pooletownsend.co.uk)  
[enquiries@pooletownsend.co.uk](mailto:enquiries@pooletownsend.co.uk)

We are open  
 Monday – Friday 9.00 – 5.00  
 Saturday 9.00 – 1.00

Barrow 01229 811811  
 Ulverston 01229 588111  
 Grange 015395 33316  
 Kendal 01539 734455  
 Milnthorpe 015395 62044