

**LONDON  
VICTORIA  
GROUPS** 



**LONDON  
VICTORIA  
GROUPS** 



**LONDON  
VICTORIA  
GROUPS** 



**LONDON  
VICTORIA  
GROUPS** 



**LONDON  
VICTORIA  
GROUPS** 

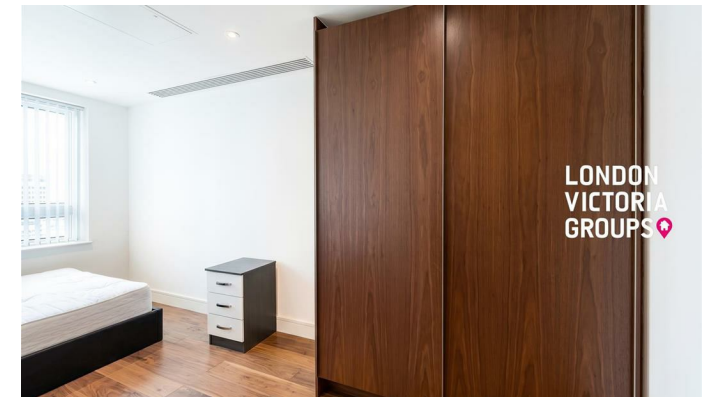
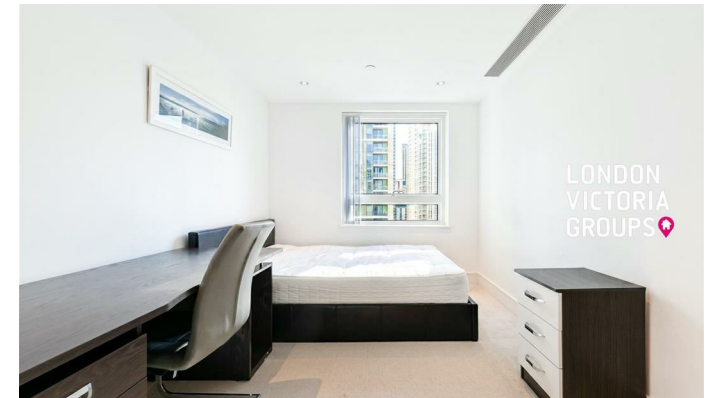
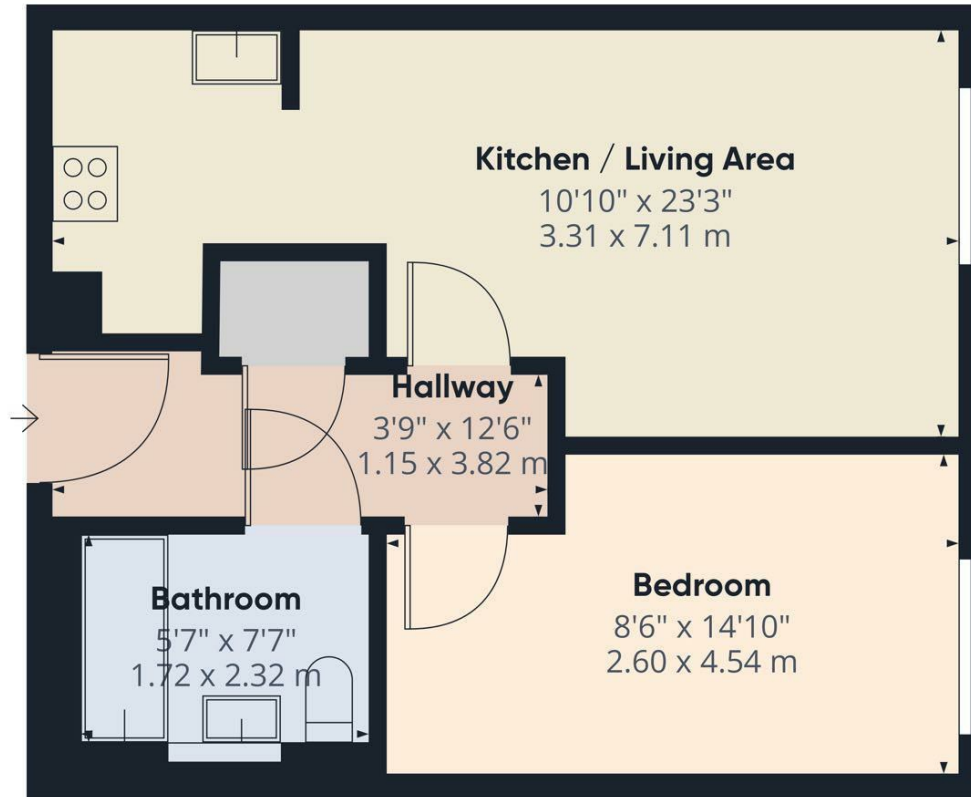
## **Duckman Tower, 3 Lincoln Plaza**

, London E14 9BL

- South Quay DLR Station/Canary Wharf Station
- Fully equipped residents' gym
- Landscaped sky garden
- EPC-B
- 24-hour concierge service
- Swimming pool
- Secure entry system and lift access
- CTB-E

**£2,400 Per Month**

Local Authority **Tower Hamlets**  
Council Tax Band **E**  
EPC Rating **B**



**London Office Office**

Spaces Victoria, 25 Wilton Road, Pimlico,  
London, SW1V 1LW

**Contact**

020 3084 3094  
XL@londonvictoriagroups.co.uk  
www.londonvictoriagroups.co.uk

Agents Note: Whilst every care has been taken to prepare these particulars, they are for guidance purposes only. All measurements are approximate and for general guidance purposes only and whilst every care has been taken to ensure accuracy, they should not be relied upon and potential buyers/tenants are advised to recheck the measurements.