



## Avenue Road, W3

£950,000

A semi-detached three bedroom Victorian family home in the popular Mill Hill Conservation Area. The kitchen and bathrooms have been recently modernised and the property has a large garden offering the potential to extend subject to the usual consents.



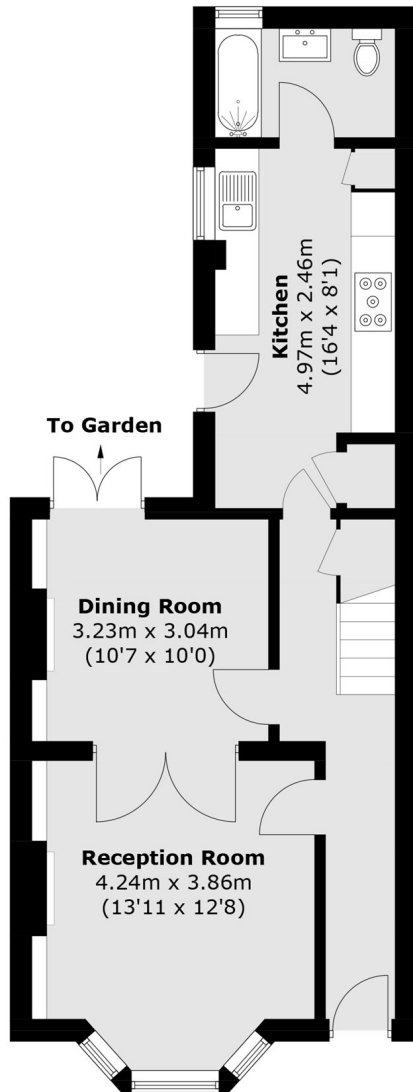
The property consists of a double reception room with original wood flooring and feature fireplaces, a new kitchen with doors opening out to the large landscaped garden and a modern family bathroom. Upstairs there are three double bedrooms.

Centrally located in the popular Mill Hill Park Conservation Area the house is also located close to a number of excellent local schools including the popular Ark Academy.

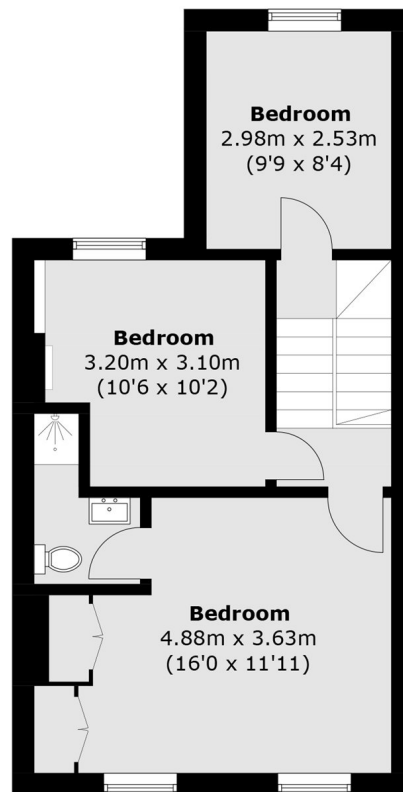
Avenue Road is moments from Acton Town station and within half a mile of South Acton station both of which offer excellent access into town.

- Three Bedrooms • Two Bathrooms • Semi- Detached •
  - Large Garden • Close To Station • Mill Hill Conservation Area •
-





**Ground Floor**



**First Floor**

Total area (approx.): 94.4 sq. m (1,016.1 sq. ft)

Robertson Smith & Kempson Acton Sales  
137 High Street, Acton,  
London, W3 6LY  
020 8896 3996  
actonsales@robertsonsmithandkempson.co.uk

Energy Rating: D. We aim to make our particulars both accurate and reliable. However they are not guaranteed; nor do they form part of an offer or contract. If you require clarification on any points then please contact us, especially if you're traveling some distance to view. Please note that appliances and heating systems have not been tested and therefore no warranties can be given as to their good working order.