



## Edencroft

West Pelton DH9 6SF

£650 Per Month





This footer paragraph is an example only and should not be relied upon as complying with current legislation. These particulars, whilst believed to be accurate are set out as a general outline only for guidance and do not constitute any part of an offer or contract. Intending purchasers should not rely on them as statements of representation of fact, but must satisfy themselves by inspection or otherwise as to their accuracy. No person in this firm's employment has the authority to make or give any representation or warranty in respect of the property.

# Edencroft

West Pelton DH9 6SF



Nestled in the tranquil residential area of Edencroft, West Pelton, this immaculately refurbished first-floor apartment presents an excellent opportunity for comfortable living. With two well-proportioned bedrooms and a modern bathroom, this property is ideal for individuals or professionals seeking a peaceful retreat.

Upon entering the building, you will find access to the ground floor hallway. A flight of stairs leads you to the entrance hall of the flat, where you are welcomed into a spacious lounge and dining area. The room is bathed in natural light, thanks to the double-glazed patio doors that open onto a charming balcony, perfect for enjoying views over the surrounding woodland.

The kitchen is superbly fitted with built-in appliances, making it both functional and stylish. The two double bedrooms offer ample space for relaxation, while the refitted white bathroom features modern fixtures, including a shower and underfloor heating.

Additional benefits of this property include electric panel heaters, which is both economical and efficient, as well as UPVC double-glazed windows that enhance

insulation/security and loft access with ladder for storage. The flat is offered on an unfurnished basis, allowing you the freedom to personalise your new home. Should you be interested, the existing furniture can be removed or made available for purchase.

Communal parking to the front, this flat combines convenience with comfort. Available immediately, this property is a must-see. For further details or to arrange a viewing, please do not hesitate to contact our office at 0191 3729898.

EPC rating D  
Council tax band A

## ENTRANCE

## LOUNGE/DINER

## KITCHEN

9'07 x 7'08 (2.92m x 2.34m)

## MAIN BEDROOM

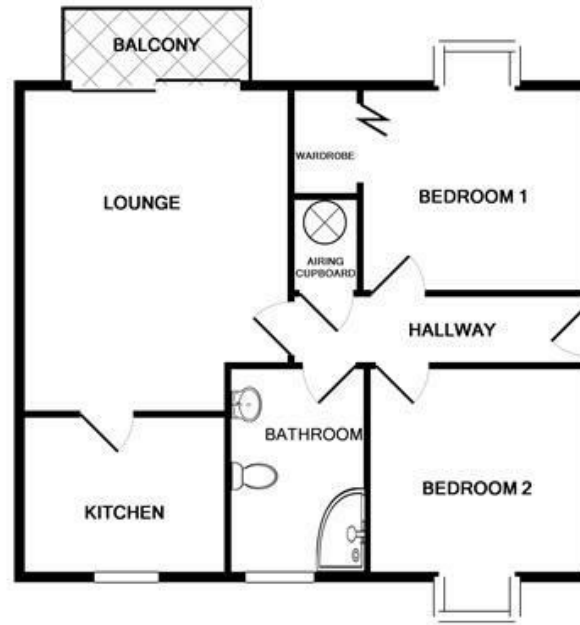
10'00 x 10'05 (3.05m x 3.18m)

## BEDROOM 2

10'09 x 9'10 (3.28m x 3.00m)

## BATHROOM

## OUTSIDE/PARKING



TOTAL APPROX. FLOOR AREA 623 SQ.FT. (57.8 SQ.M.)

Whilst every attempt has been made to ensure the accuracy of the floor plan contained here, measurements of doors, windows, rooms and any other items are approximate and no responsibility is taken for any error, omission, or mis-statement. This plan is for illustrative purposes only and should be used as such by any prospective purchaser. The services, systems and appliances shown have not been tested and no guarantee as to their operability or efficiency can be given.

Made with Metropix ©2019



## Property Information

**0191 372 9898**

Suite 6, 15 North Burns, Chester-Le-Street, County Durham, DH3 3TF  
[sales.cls@venturepropertiesuk.com](mailto:sales.cls@venturepropertiesuk.com)