





78 Cross Lane

Newton-Le-Willows, Newton-Le-Willows

Generously sized 4-bedroom end-of-terrace property with 4 floors, including a basement suite. Spacious living areas, off-street parking, and a generously sized garden with a garden room.

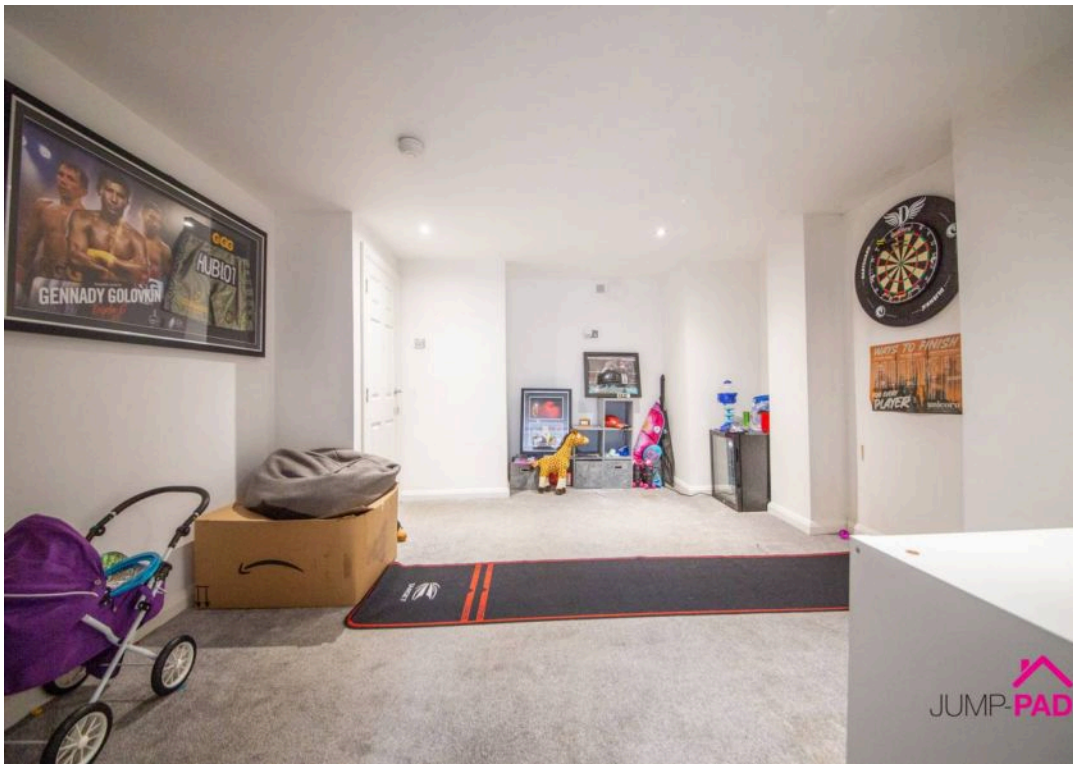
Council Tax band: B

Tenure: Leasehold

- A large 4 bedroom property with accommodation on 4 floors
- Spacious living room, extended kitchen/dining room with bi-fold doors
- A basement suite with a living room, bedroom and ensuite
- 1st floor master bedroom, ensuite, 2nd bedroom and family bathroom
- Large 2nd floor bedroom with window to front elevation and a Velux
- Off-street parking, good sized rear garden, garden room/kitchen

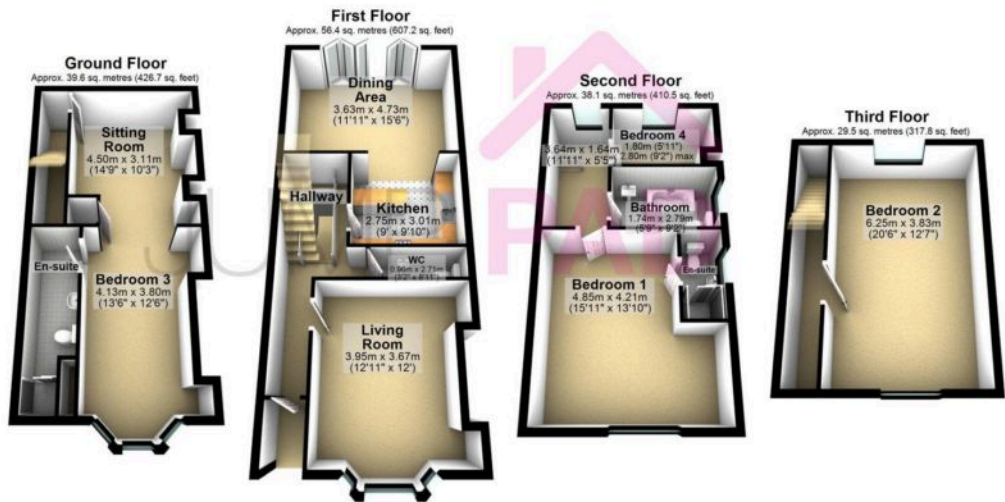












Total area: approx. 163.7 sq. metres (1762.3 sq. feet)

Floor plans are intended to give an indication of the layout only. All images, floor plans and dimensions are not intended to form part of any contract. Plan produced using PlanUp.

