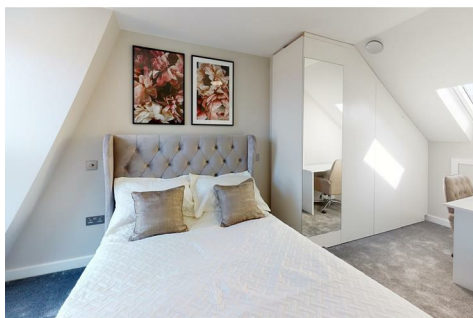


L·D·B

SALES, LETTINGS
& MANAGEMENT



LOCHALINE STREET

THIS NEWLY CONSTRUCTED, LUXURIOUS 7-BEDROOM SHARED HOME IN HAMMERSMITH, LOCATED ON LOCHALINE STREET, IS AN IDEAL CHOICE FOR A GROUP OF SEVEN SHARERS LOOKING TO LIVE TOGETHER. SITUATED JUST A 10-MINUTE WALK FROM HAMMERSMITH TUBE STATION AND A MERE 2-MINUTE STROLL TO THE BUS STOP ON FULHAM PALACE ROAD, THIS RESIDENCE OFFERS CONVENIENCE AND ACCESSIBILITY.

INCLUSIVE BILLS: THE RENT COVERS ENERGY, WATER, AND LIGHTNING-FAST GIGABIT BROADBAND.

COUPLE WELCOME: BEDROOM 3 IS SUITABLE FOR A COUPLE LOOKING TO SHARE THE SPACE.

BEDROOM 1 - (NOW LET)
BEDROOM 2 - (NOW LET)
BEDROOM 3 - (NOW LET)
BEDROOM 4 - (NOW LET)

- MULTIPLE ROOMS IN SHAREHOUSE
- IDEAL FOR WORKING PROFESSIONALS
- ENERGY, WATER AND WIFI INCLUDED
- FANTASTIC LOCATION

£1,347 PCM

