



MARCO HARRIS  
THE PROPERTY PROFESSIONALS

# Windbrake House, Palmerston Way, Alverstoke, Gosport, Hampshire, PO12 2LZ

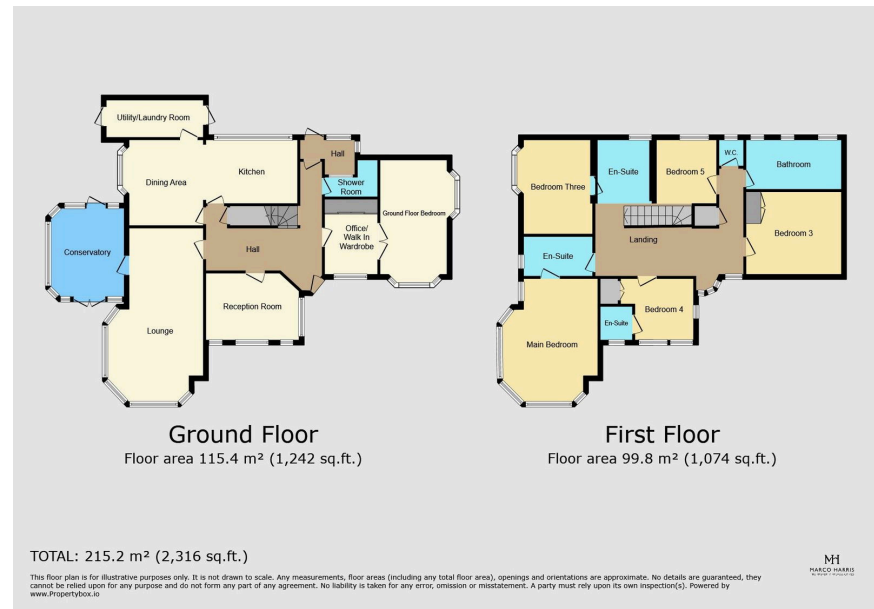
Offers Over £1,000,000

🛏️ 6 🚿 5 🚗 3



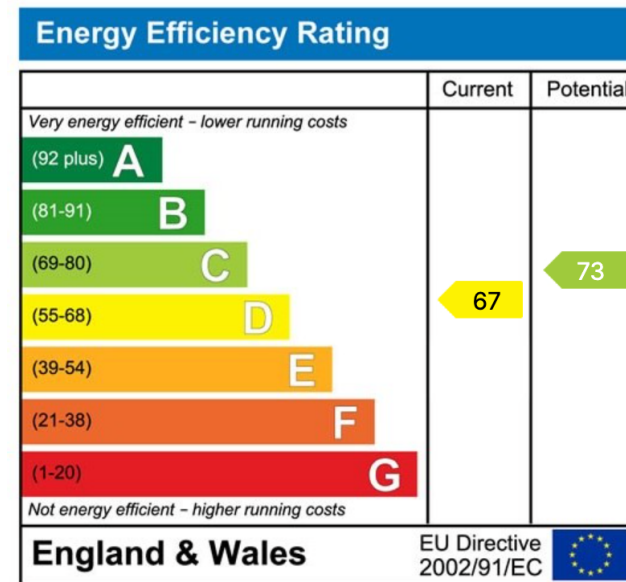
- Prime Location: Situated on the prestigious Palmerston Way in Alverstoke, offering a Six Bedroom Bed in a Box with views over the first floor of the ground floor.
- Elegant Living Spaces: Features three versatile reception rooms, including a Private Access Direct access to world class beach and sea fronted area and Stokes Bay.
- Near ONWARD Club and garden.
- Historical Significance: Built in 1936 and involved in various missions during World War II. Offers high quality finishes, including en-suite bathrooms and a quality back of beautifully landscaped gardens, with a private parking, private estate driveway and a people outdoor stables.
- Contact Mergal with a space for social media platforms, website or WhatsApp numbers. Follow us for exclusive updates to help find your next home!





### Please Check Out the Video Tours - Walk Around & Drone !

Welcome to Windbrake House, an extraordinary six-bedroom residence where history meets modern luxury, set on the prestigious Palmerston Way in Alverstoke. This one-of-a-kind property offers waterside living and views over the Solent, a private gateway to Stokes Bay seafront, and nearly a quarter acre of beautifully landscaped grounds. With its blend of timeless elegance, meticulously preserved character, and high-end contemporary finishes, Windbrake House is more than just a home—it's a rare opportunity to experience an exceptional lifestyle in one of the most requested roads in Alverstoke.



Website: [marcoharris.co.uk](http://marcoharris.co.uk)

Email: [lettings@marcoharris.co.uk](mailto:lettings@marcoharris.co.uk) // [sales@marcoharris.co.uk](mailto:sales@marcoharris.co.uk)

Phone: 02381 733330