



Guide Price
£300,000

Leasehold

2x  1x  1x 

**Matterdale Gardens,
Barming, Maidstone,
Kent ME16**

Wards
Helping you move forwards



Main features

- Chain free home
- Over 55's retirement complex
- En-suite facilities
- Suitable location for local amenities
- Garage en-bloc

Accommodation

GROUND FLOOR

Hallway

Kitchen: 8'6 x 8'2 (2.59m x 2.49m)

Lounge/Diner: 17'9 (5.41m) x 12'4 (3.76m) narrowing to 8'2 (2.49m)

Conservatory: 10'0 x 8'1 (3.05m x 2.47m)

Bedroom 1: 11'7 x 11'0 (3.53m x 3.36m)

En-Suite Shower Room

Bedroom 2: 11'0 x 9'5 (3.36m x 2.87m)

Shower Room

OUTSIDE

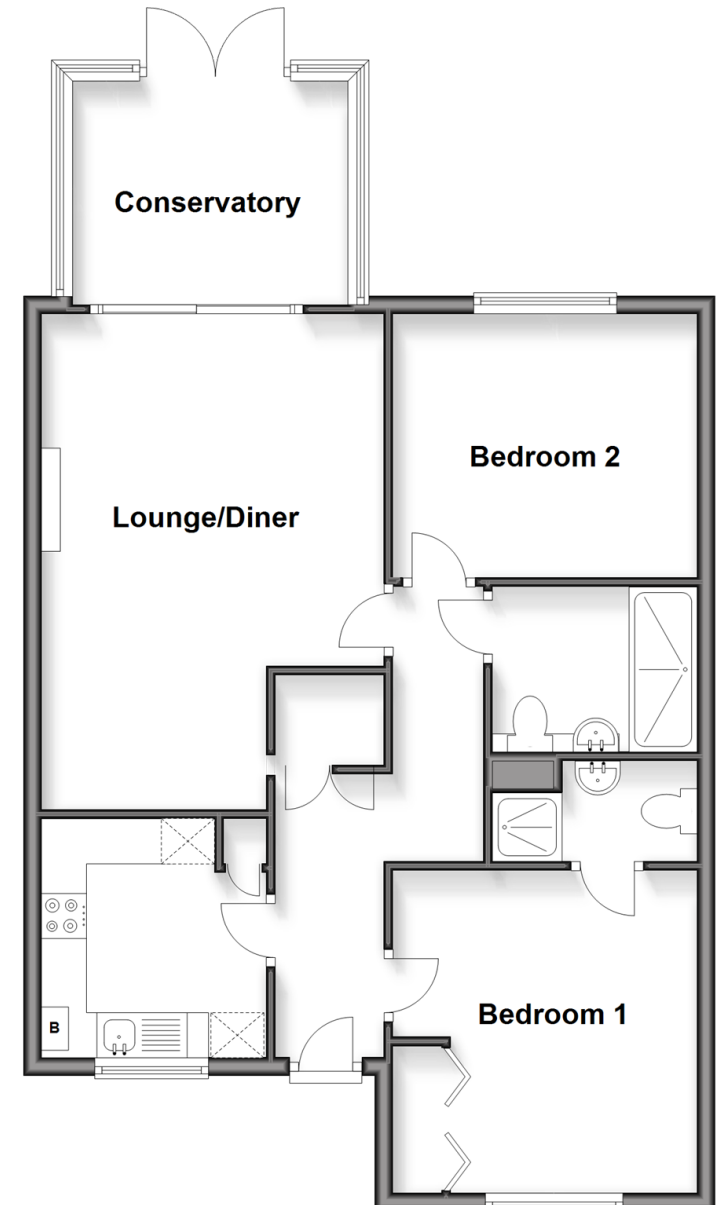
Front Garden

Rear Garden

Garage En-Bloc

Ground Floor

Approx. 72.9 sq. metres (784.8 sq. feet)



Call Maidstone - 01622 683737 ■ wardsof Kent.co.uk

- Legal advice should be taken to verify fixtures/fittings, planning, alterations and/or lease details
- Appliances & services are untested, dimensions are approximate and floor plans are not to scale



13159289/20260203/DS/DS