



CHARLES BARTLETT  
RESIDENTIAL



## 26 Spa Villas

Matlock Spa, Matlock, DE4 3ST

£1,350 Per month



STUNNING DERBYSHIRE DALES VIEWS | SPACIOUS TWO DOUBLE BEDROOM APARTMENT | BALCONY

Exceptionally spacious two-bedroom apartment, ideally positioned within the sought-after Matlock Spa development.

Flooded with natural light through impressive full-height windows, the accommodation offers a generous open-plan living, kitchen and dining space that opens onto a private balcony – the perfect place to relax and take in the stunning surroundings.

The property further benefits from a large master bedroom with en-suite shower room, a second double bedroom, a modern family bathroom, secure entry system and lockable bike storage.

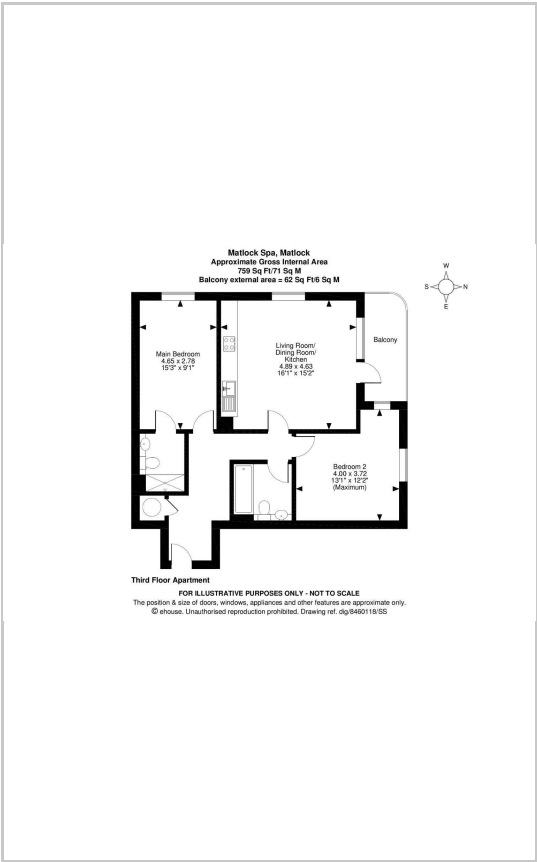
Located in the heart of the Derbyshire Dales, Matlock Spa offers the perfect balance between countryside living and modern convenience. The development is within easy reach of Matlock town centre, excellent local



# Area Map



# Floor Plans



# Energy Efficiency Graph

| Energy Efficiency Rating                           |  | Current                 | Potential |
|--|--|-------------------------|-----------|
| <i>Very energy efficient - lower running costs</i> |  |                         |           |
| (92 plus) <b>A</b>                                 |  |                         |           |
| (81-91) <b>B</b>                                   |  |                         |           |
| (69-80) <b>C</b>                                   |  |                         |           |
| (55-68) <b>D</b>                                   |  |                         |           |
| (39-54) <b>E</b>                                   |  |                         |           |
| (21-38) <b>F</b>                                   |  |                         |           |
| (1-20) <b>G</b>                                    |  |                         |           |
| <i>Not energy efficient - higher running costs</i> |  |                         |           |
| <b>England &amp; Wales</b>                         |  | EU Directive 2002/91/EC |           |

These particulars, whilst believed to be accurate are set out as a general outline only for guidance and do not constitute any part of an offer or contract. Intending purchasers should not rely on them as statements of representation of fact, but must satisfy themselves by inspection or otherwise as to their accuracy. No person in this firms employment has the authority to make or give any representation or warranty in respect of the property.

The Newt, Denchworth Manor Hyde Road, Denchworth, Oxford, OX12 0DX  
 Tel: 07939 496551 Email: charles@charlesbartlett.co.uk www.charlesbartlett.co.uk