



Woodlawn Road, SW6

£1,350,000

Set on a sought after road within the Alphabet Streets, this exceptional semi-detached, four bedroom split-level apartment is presented in immaculate condition throughout.

Woodlawn Road is located moments away from the green space of Bishops Park and the River Thames. There are an abundance of local cafés, boutiques shops and restaurants nearby in Parsons Green.

Features

- Four Bedrooms
- Three Bathrooms
- Bishops Park
- Share of Freehold
- Private Garden
- Alphabet Street



Woodlawn Road, SW6

The property features a bright and spacious west-facing reception room with high ceilings and bay windows looking directly down Greswell Street, ensuring the room is flooded with natural light.

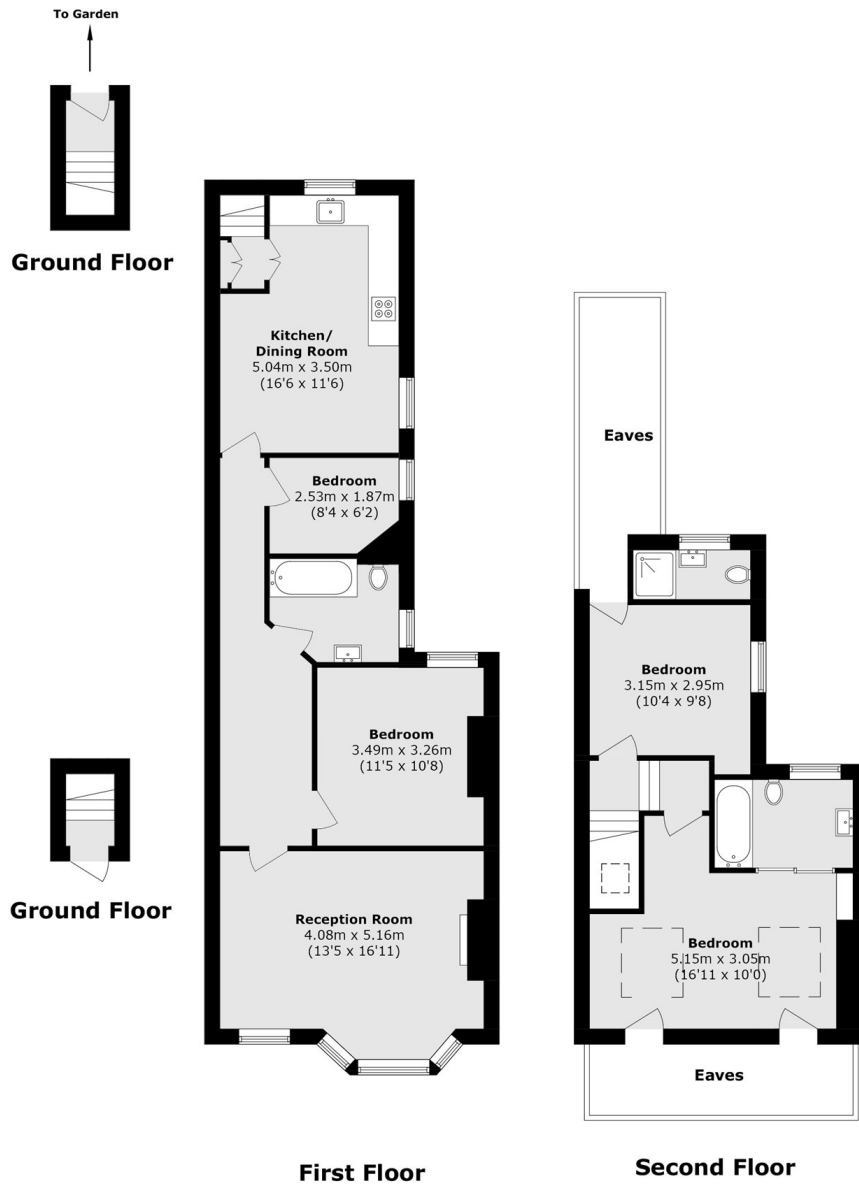
There is a sleek, fully fitted, eat-in kitchen with high-spec appliances and dual-aspect windows, which leads down to a private, beautifully maintained garden.

Spanning over 1,200 sq ft, the property boasts four well-proportioned bedrooms with ample storage, as well as three bathrooms, creating the feeling of a house.

Elegant interiors and a high-end finish create a turnkey home offering a perfect blend of contemporary style and period features.



Woodlawn Road, London, SW6



Total area (approx.): 111.8 sq. m (1203.4 sq. ft)
(Excluding Eaves)