

1 Pewterers Avenue

Bishop's Stortford, Bishop's Stortford

Council Tax band: G

Tenure: Freehold

- Five double bedroom home
- Two ensuite bathrooms
- Garage & carport
- Kitchen / family room
- Utility room
- Much-loved location



Entrance Hall

WC

Dining Room

16' 9" x 11' 8" (5.10m x 3.56m)

Kitchen

24' 0" x 11' 11" (7.31m x 3.62m)

Utility

5' 8" x 8' 5" (1.73m x 2.56m)

Internal Garage

9' 9" x 19' 1" (2.98m x 5.82m)

Living Room

16' 8" x 23' 10" (5.07m x 7.27m)

Bedroom

13' 4" x 23' 10" (4.06m x 7.27m)

Ensuite Bathroom

Bedroom

10' 2" x 11' 10" (3.09m x 3.61m)

Bedroom

13' 8" x 23' 10" (4.16m x 7.27m)

Ensuite Bathroom

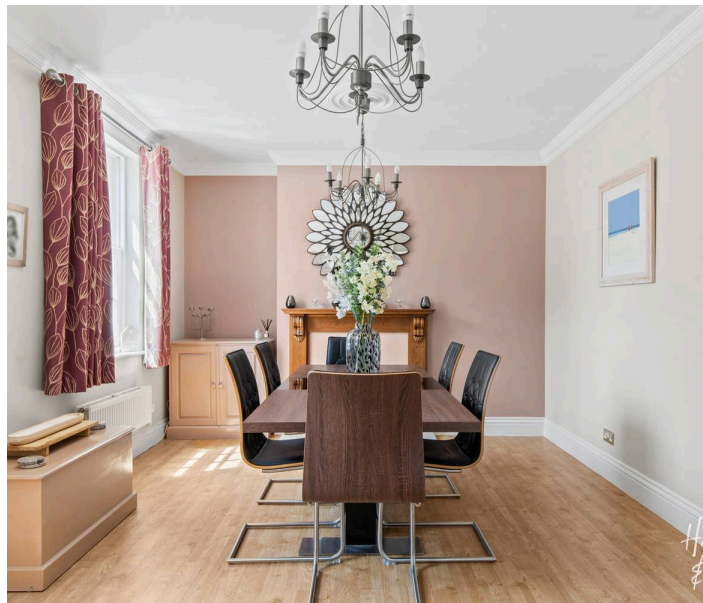
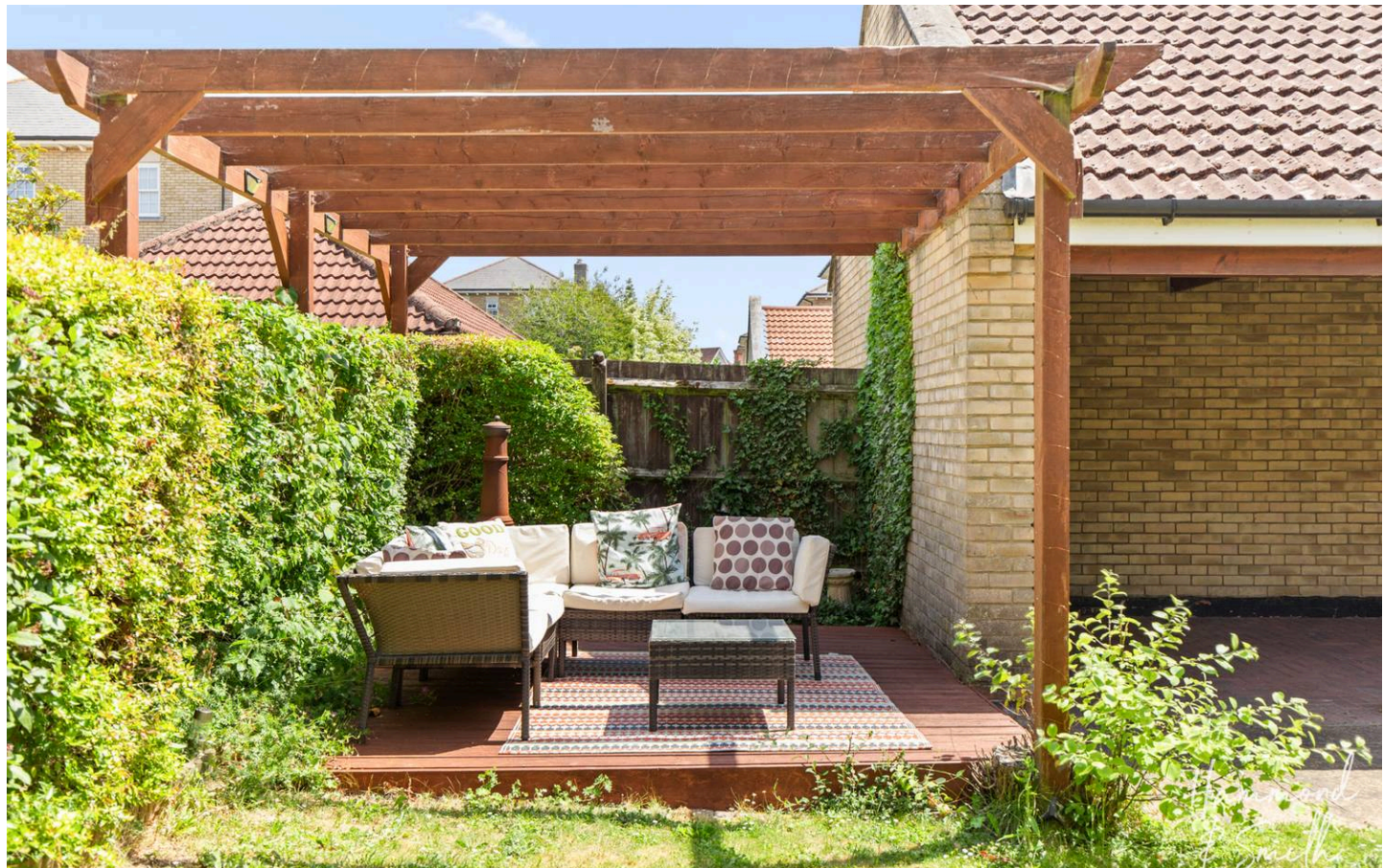
Bedroom

16' 8" x 11' 7" (5.07m x 3.53m)

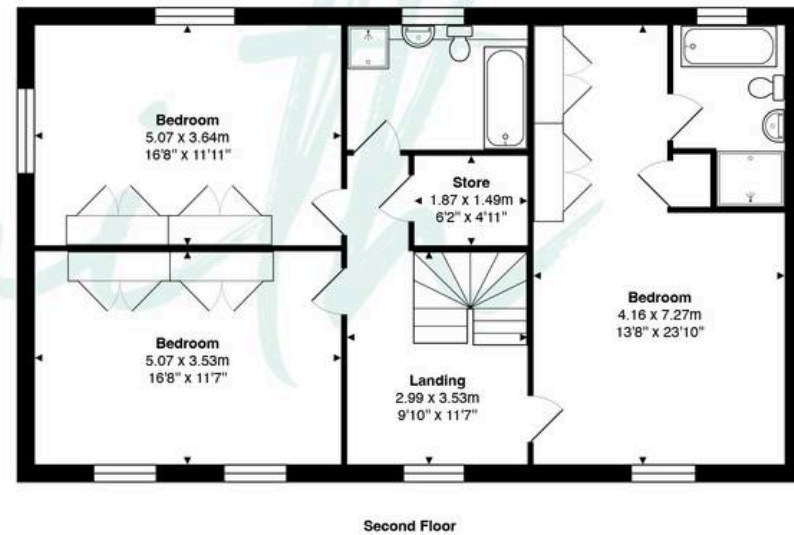
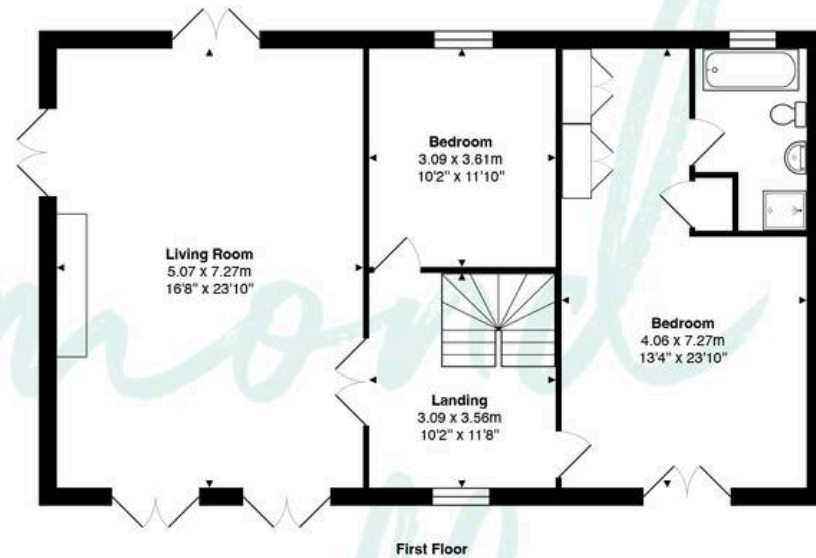
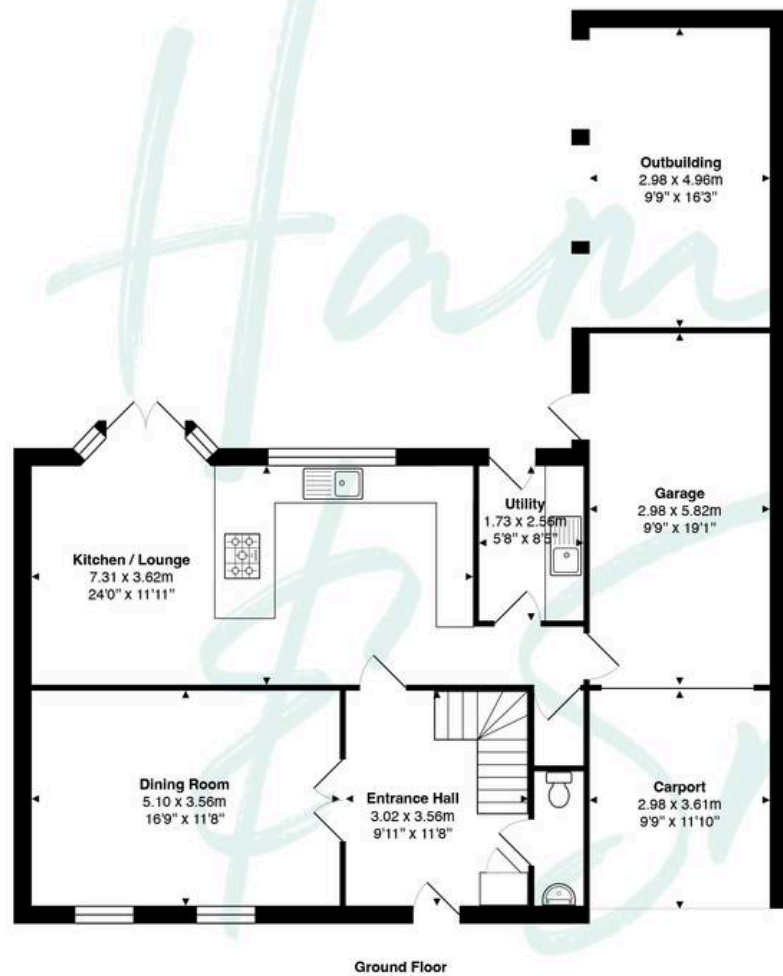
Bedroom

16' 8" x 11' 11" (5.07m x 3.64m)

Bathroom







Total Area: approx. 265.6 m² ... 2859 ft² (excluding outbuilding, carport)
 THE FLOORPLAN IS FOR ILLUSTRATIVE PURPOSES ONLY AND IS NOT TO SCALE.
 Measurements and features are approximate and may differ from the actual property. Verify all details independently; no liability is accepted for errors or omissions.
 Property marketing provided by www.fotomarketing.co.uk